



# Community Forestry can further equality: integrating environmental justice, the human hierarchy of needs, and the breath of life into community forestry

Beck Swab (they/them), PhD

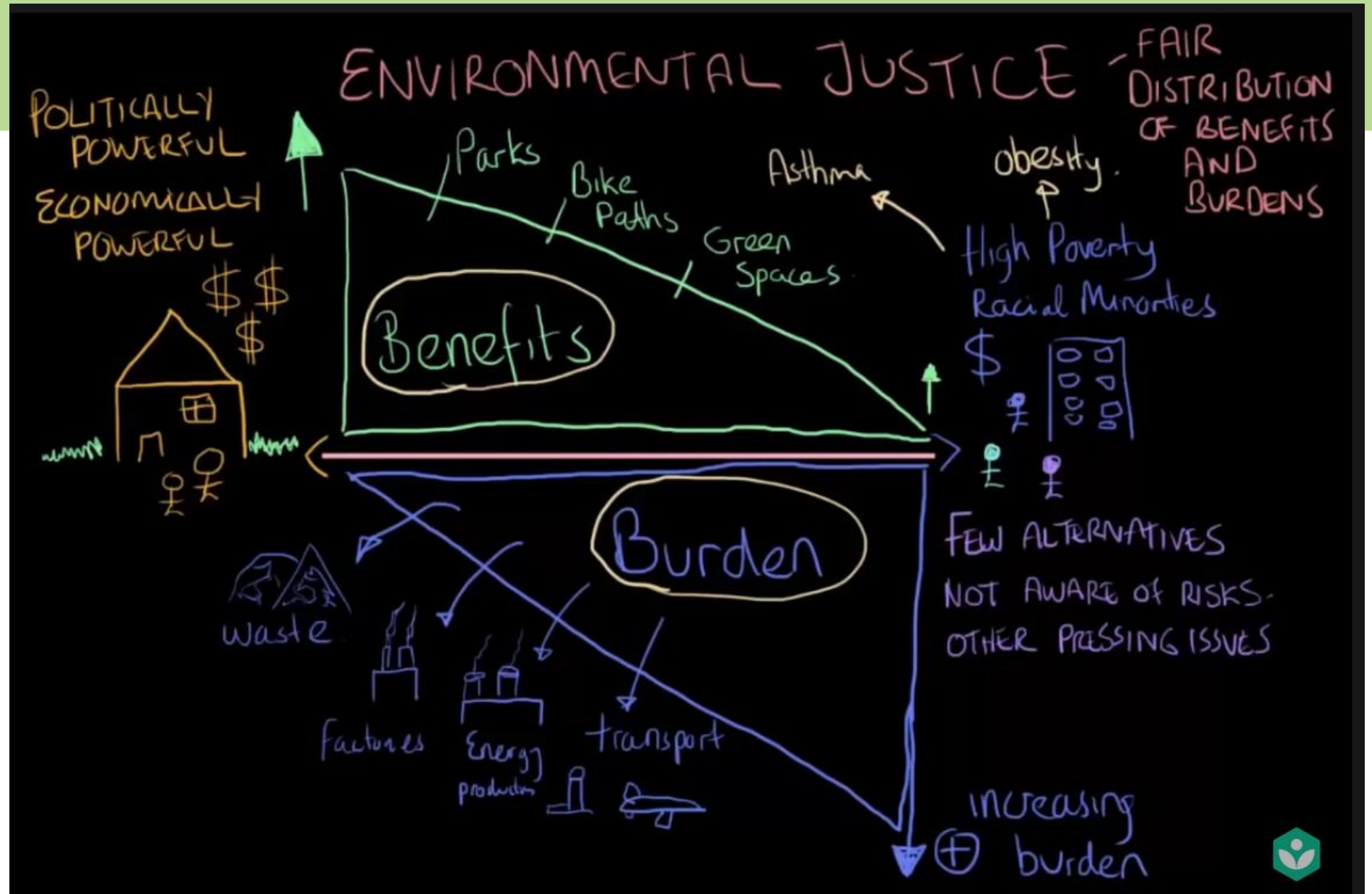
Director of Conservation and Community Forestry

[rswab@holdenfg.org](mailto:rswab@holdenfg.org)



HOLDEN  
FORESTS &  
GARDENS

# Environmental justice



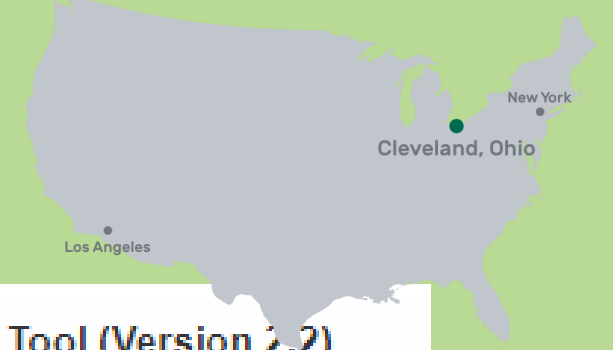
From: Khan Academy

<https://www.youtube.com/watch?v=0L2xCwD5RNI&t=265s>





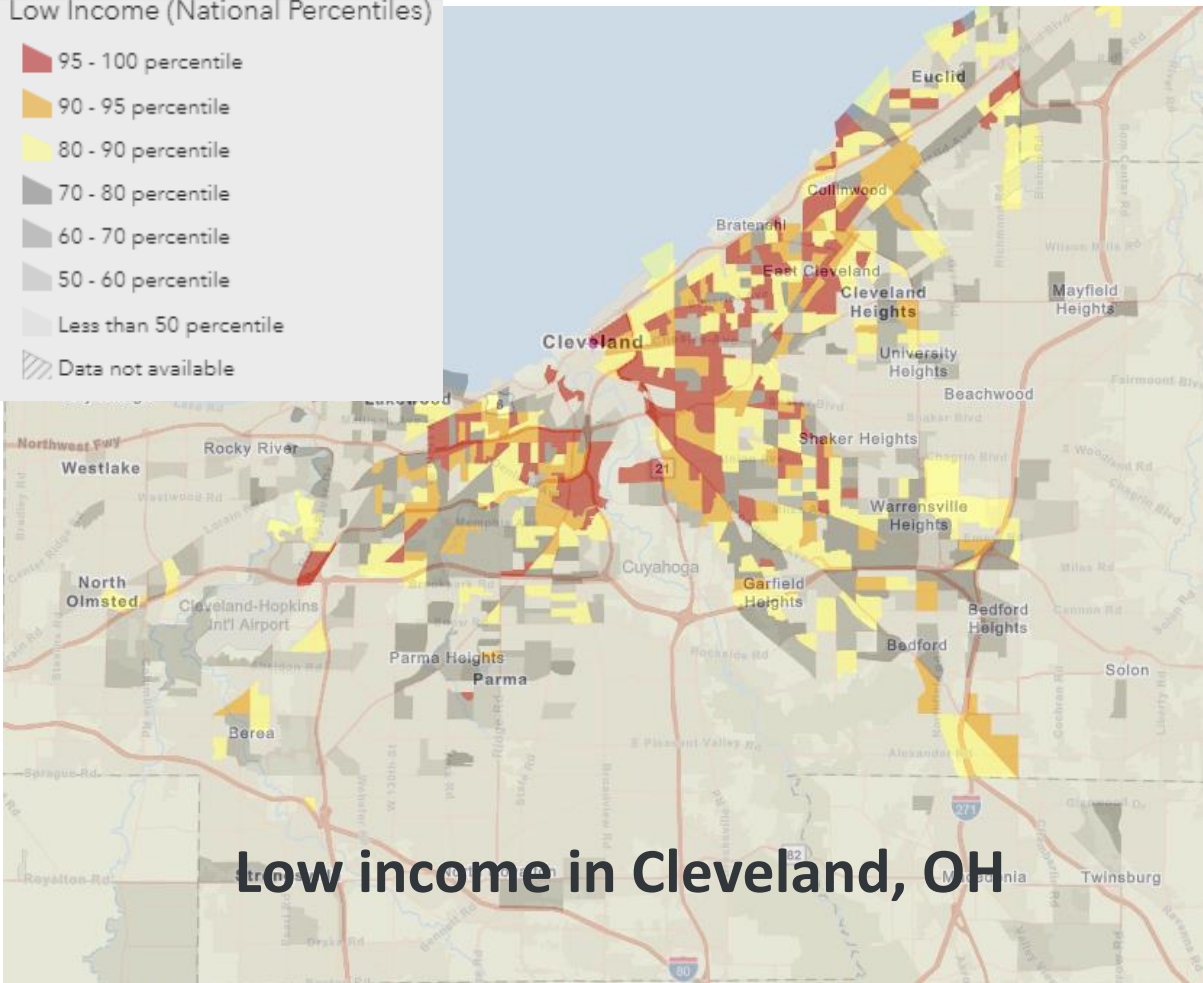
# Environmental Justice in Cleveland, Ohio



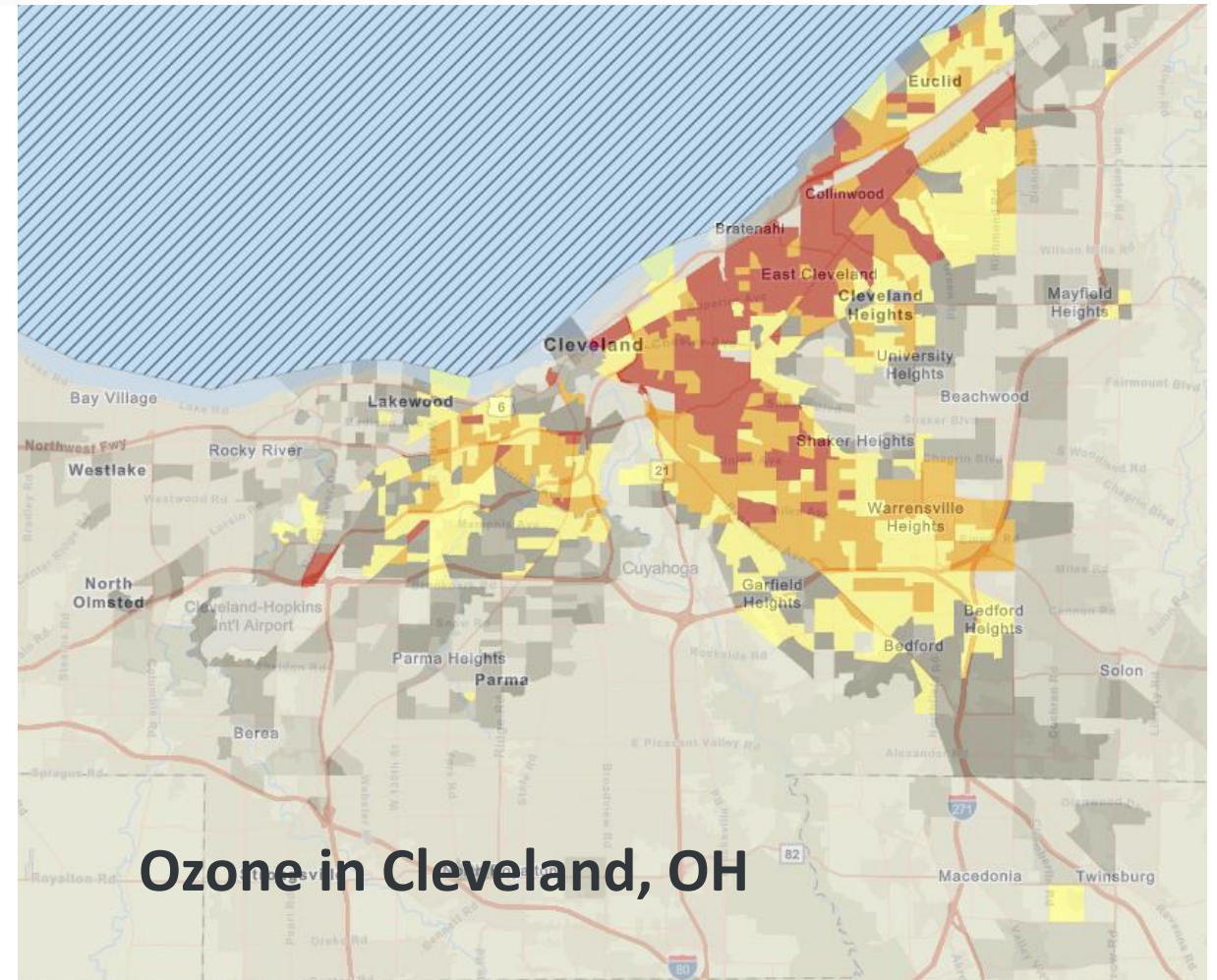
**EPA EJScreen** EPA's Environmental Justice Screening and Mapping Tool (Version 2.2)

Low Income (National Percentiles)

- 95 - 100 percentile
- 90 - 95 percentile
- 80 - 90 percentile
- 70 - 80 percentile
- 60 - 70 percentile
- 50 - 60 percentile
- Less than 50 percentile
- Data not available



Low income in Cleveland, OH



Ozone in Cleveland, OH

# Environmental justice and community forestry Interdisciplinary

## Hierarchy of Needs

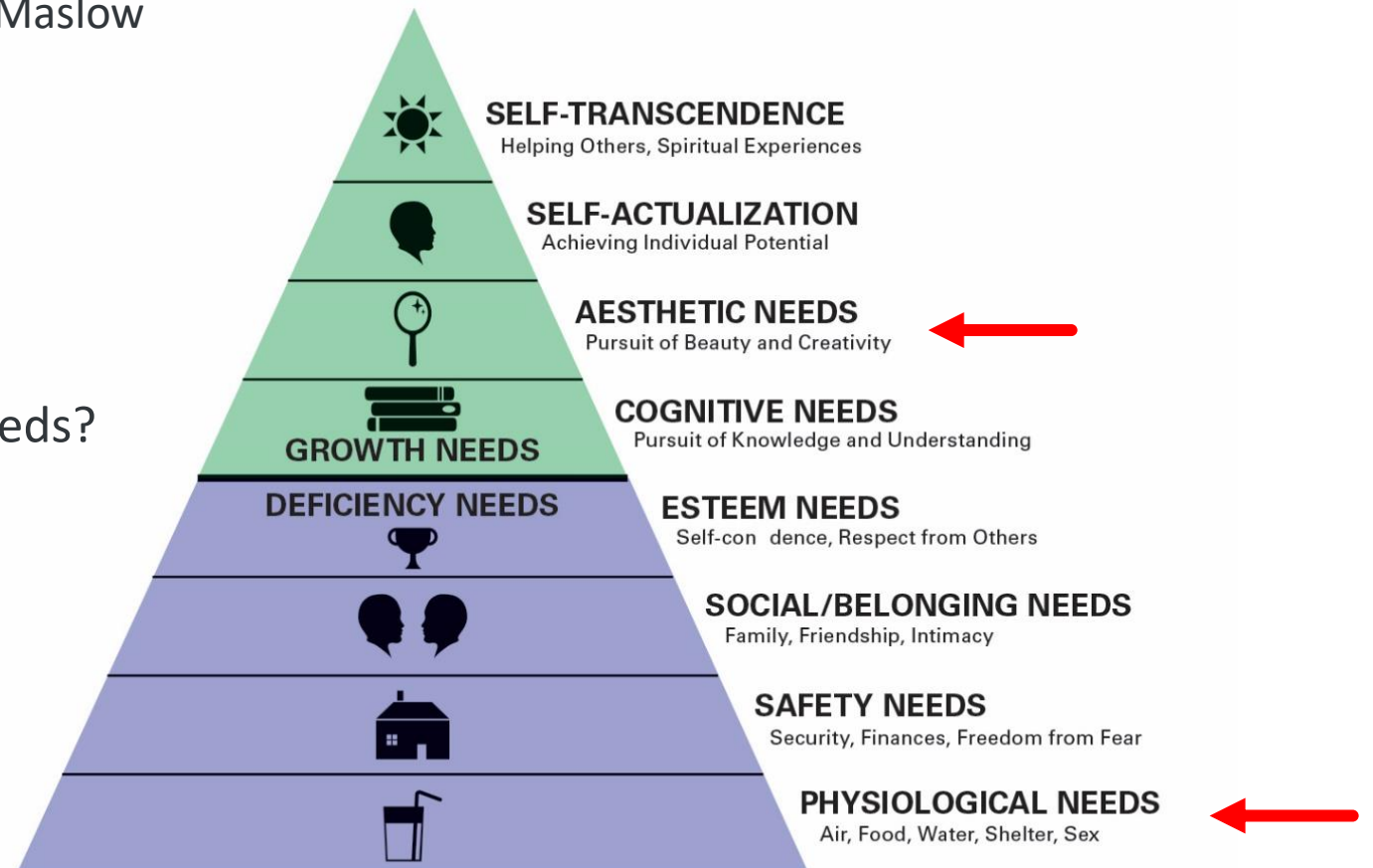
Developed by Maslow

Where do most community forestry projects fall along this hierarchy?

Who benefits most from these projects?

What if these projects focused on deficiency needs?

Now who benefits most?





# Environmental justice and community forestry

## Cleveland Tree Canopy



Tree Canopy varies by neighborhood, result of historic racism (i.e. redlining).



**Cleveland Tree Plan**  
Together We're Making Cleveland  
the Forest City Once Again  
EXECUTIVE SUMMARY

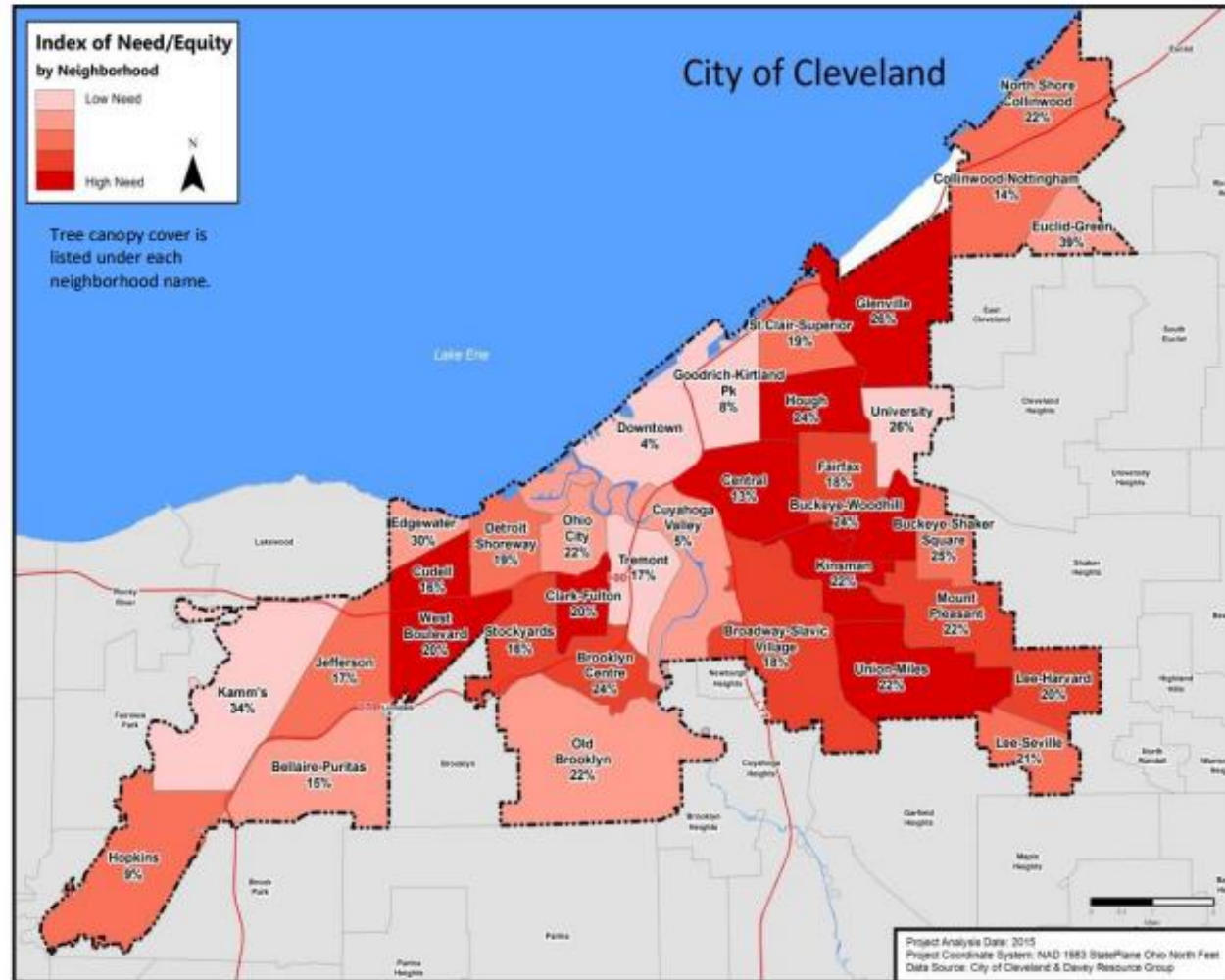


Figure 21. Index of need/equity by neighborhood.

# Environmental justice and community forestry

## Cleveland Tree Canopy

1,842 Urban Trees Planted or Cared for by Holdens Urban Forestry Program

Year	Trees planted	Trees maintained
2018	510	272
2019	111	191
2021	294	102
2023	184	178

### Cleveland Tree Plantings





# Environmental justice and community forestry Interdisciplinary

**Cindy Blackstock**

FIRST NATIONS CARING SOCIETY



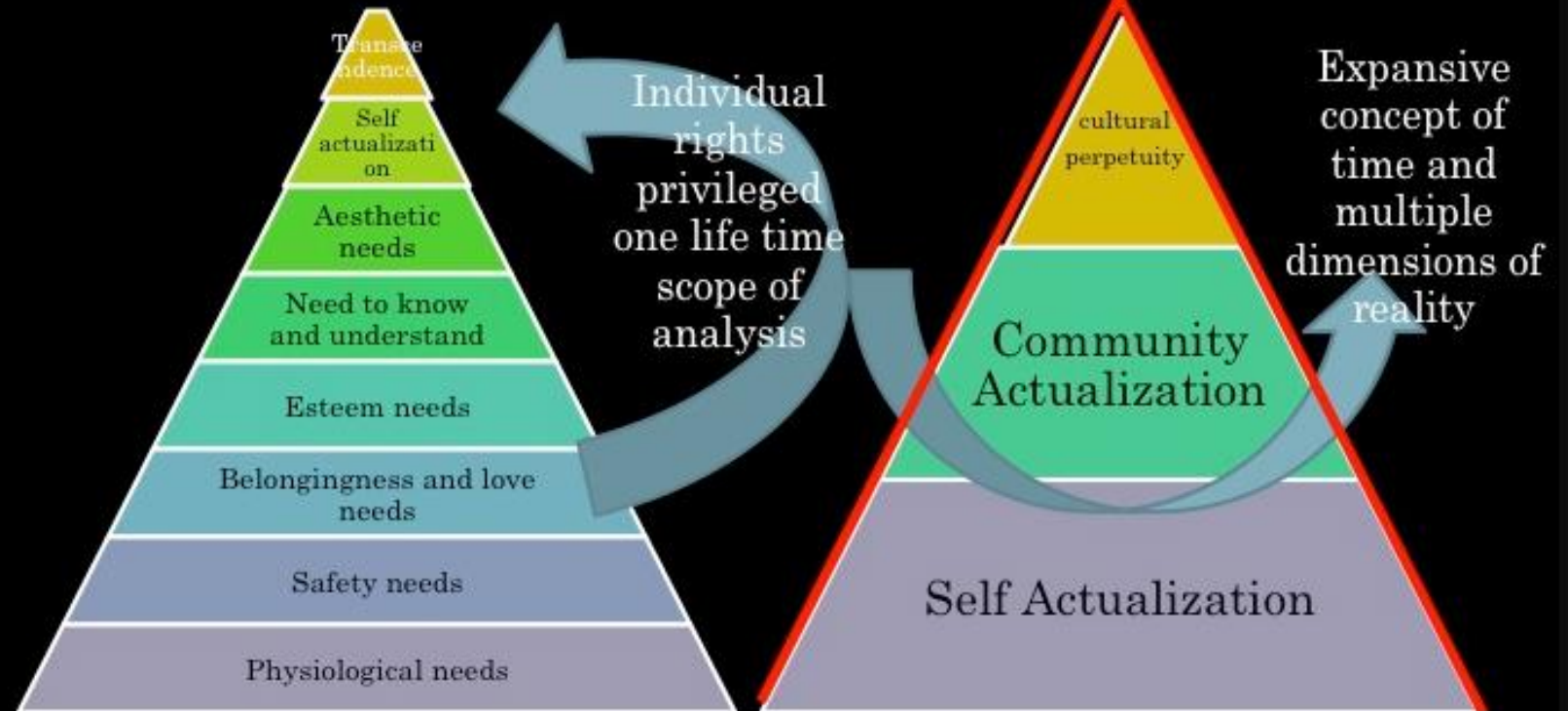
“Breath of life” as  
presented by  
Dr. Cindy Blackstock



MASLOW'S HIERARCHY OF NEEDS (INFORMED BY  
BLACKFOOT NATION (ALTA))

**Western Perspective**

**First Nations Perspective**



# Environmental justice and community forestry

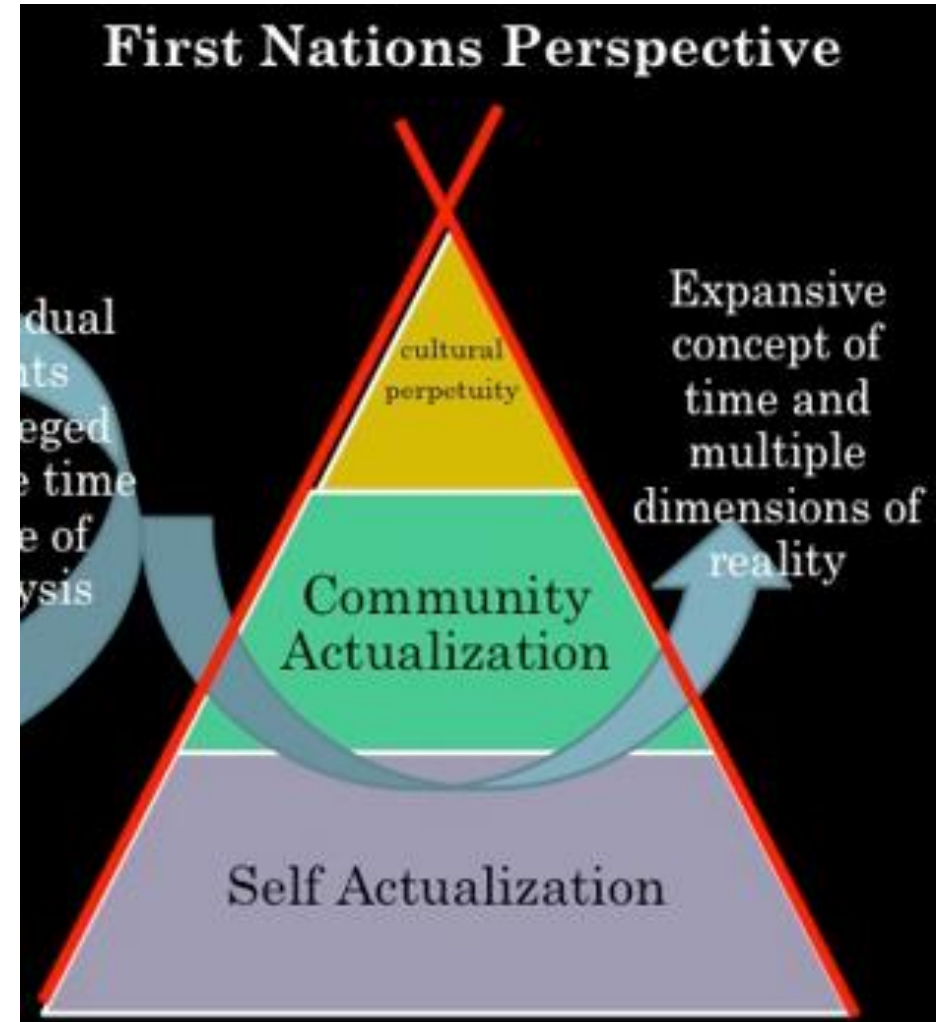
## Interdisciplinary

### **Cultural perpetuity:**

“... you will be forgotten, but you have a part in ensuring that your people’s important teachings live on.”

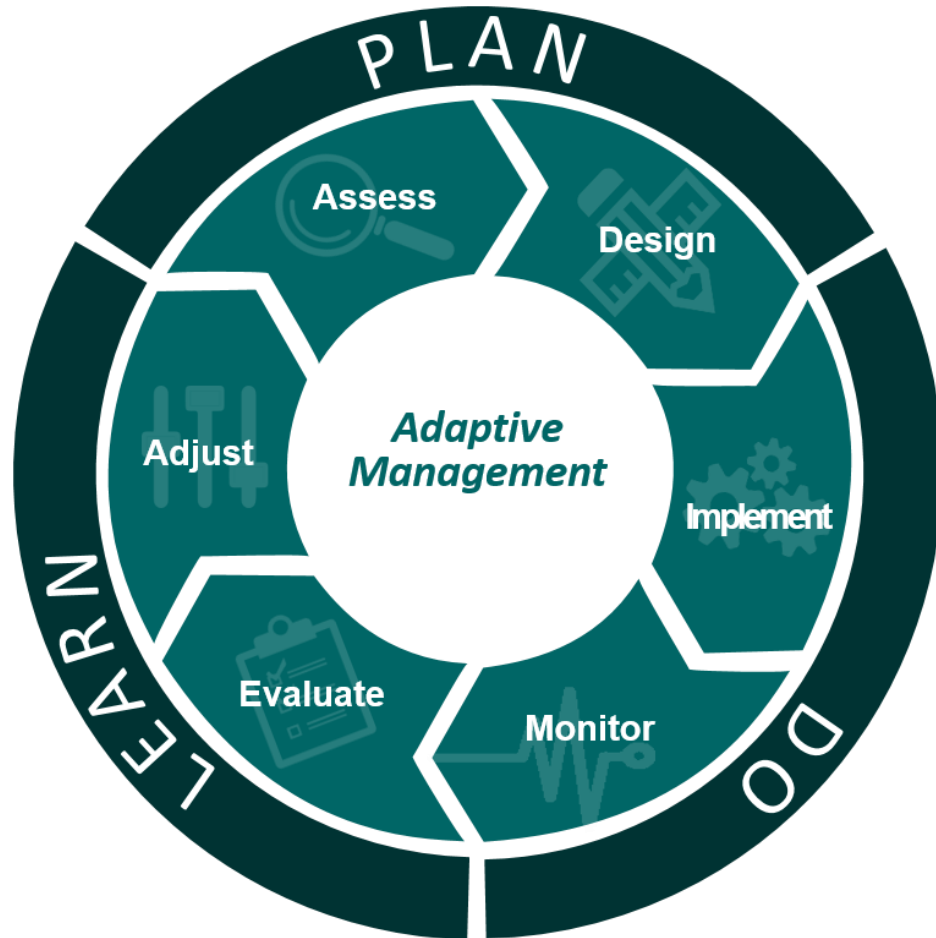
### **Community actualization:**

the work of meeting basic needs is a community responsibility.



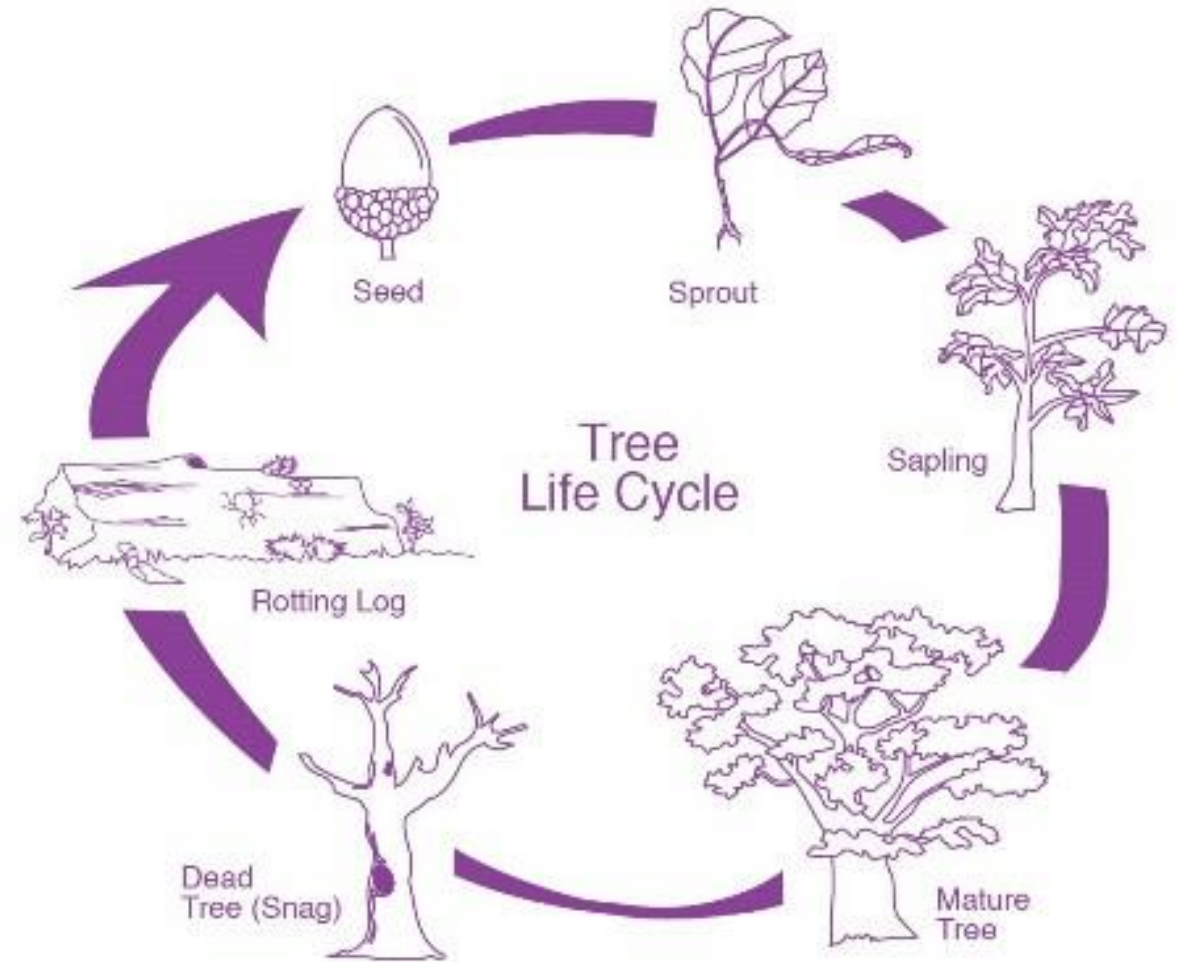
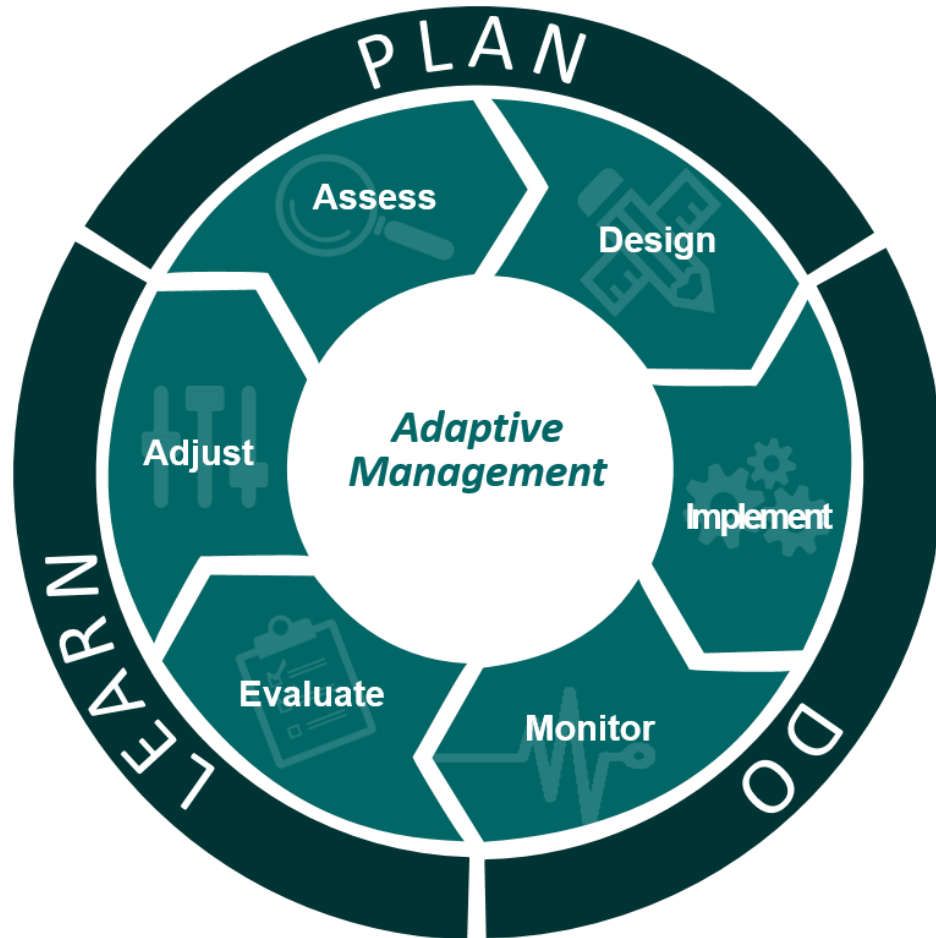


# Environmental justice and community forestry Interdisciplinary



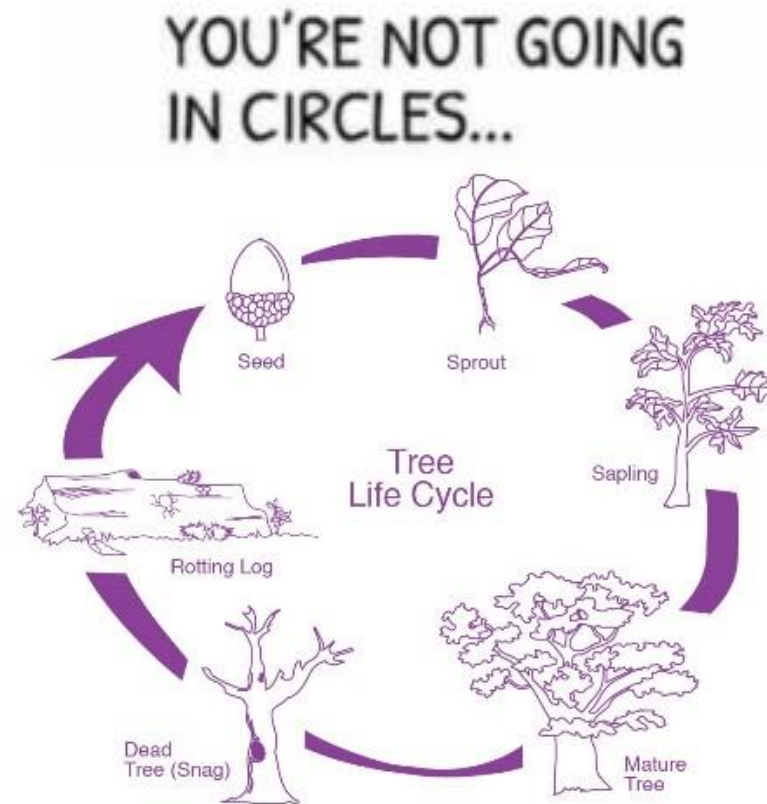
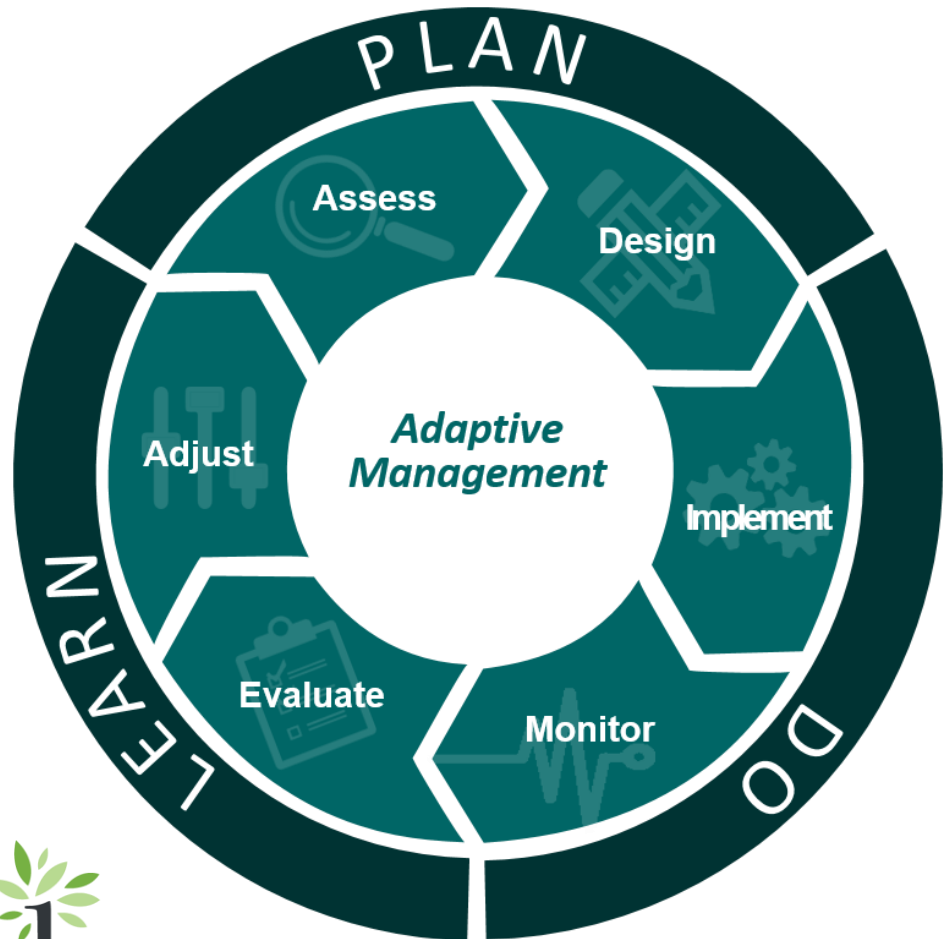
# Environmental justice and community forestry

## Interdisciplinary





# Environmental justice and community forestry Interdisciplinary



...YOU JUST NEED  
TO SEE DIFFERENTLY

# Creating community around trees

## Acknowledgements

### Community

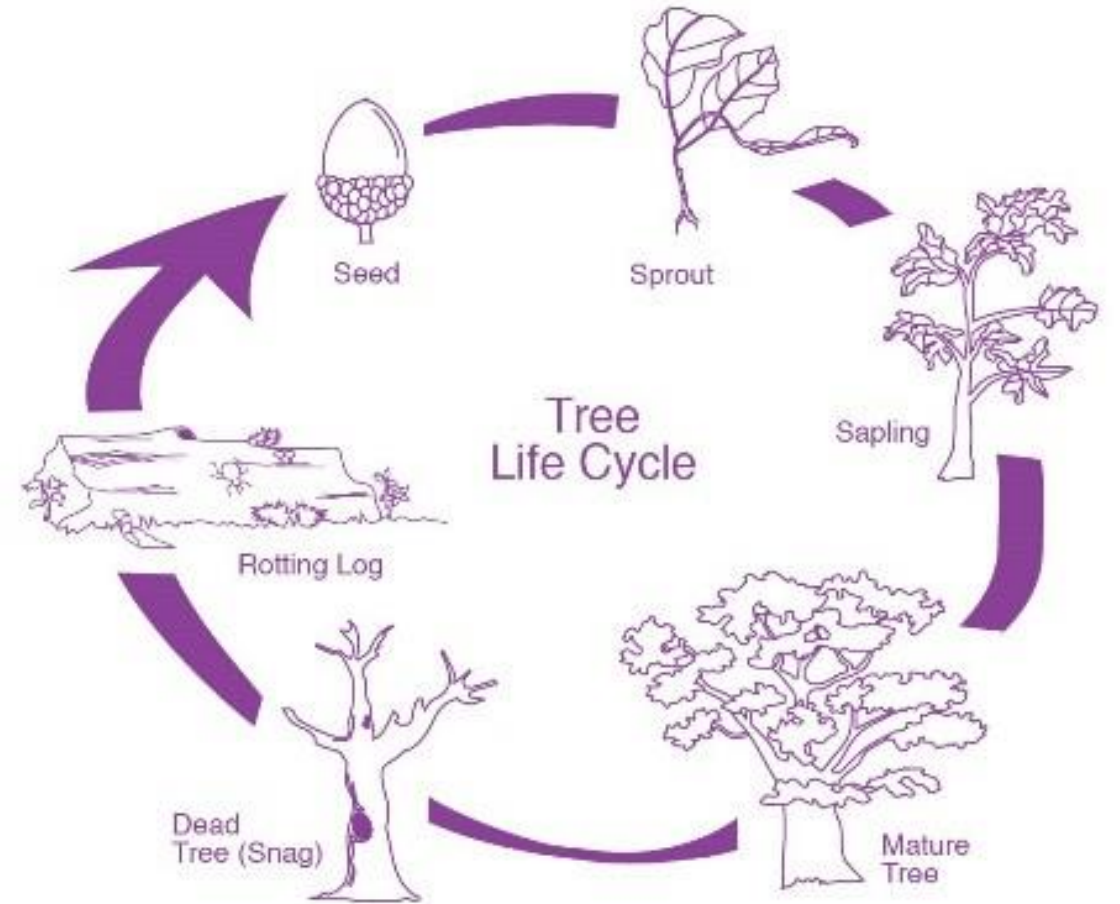
Food not bombs volunteers

Students at OSU

Community members in Columbus & Cleveland

Conservationists across the midwest

Cycle workshop participants at local arts & community festivals (Mosaic, Equilumia)



© Project Learning Tree, www.plt.org





# Conservation can further equality: reframing conservation with environmental justice, the human hierarchy of needs, and the breath of life

Beck Swab (they/them), PhD

Director of Conservation and Community Forestry

[rswab@holdenfg.org](mailto:rswab@holdenfg.org)

