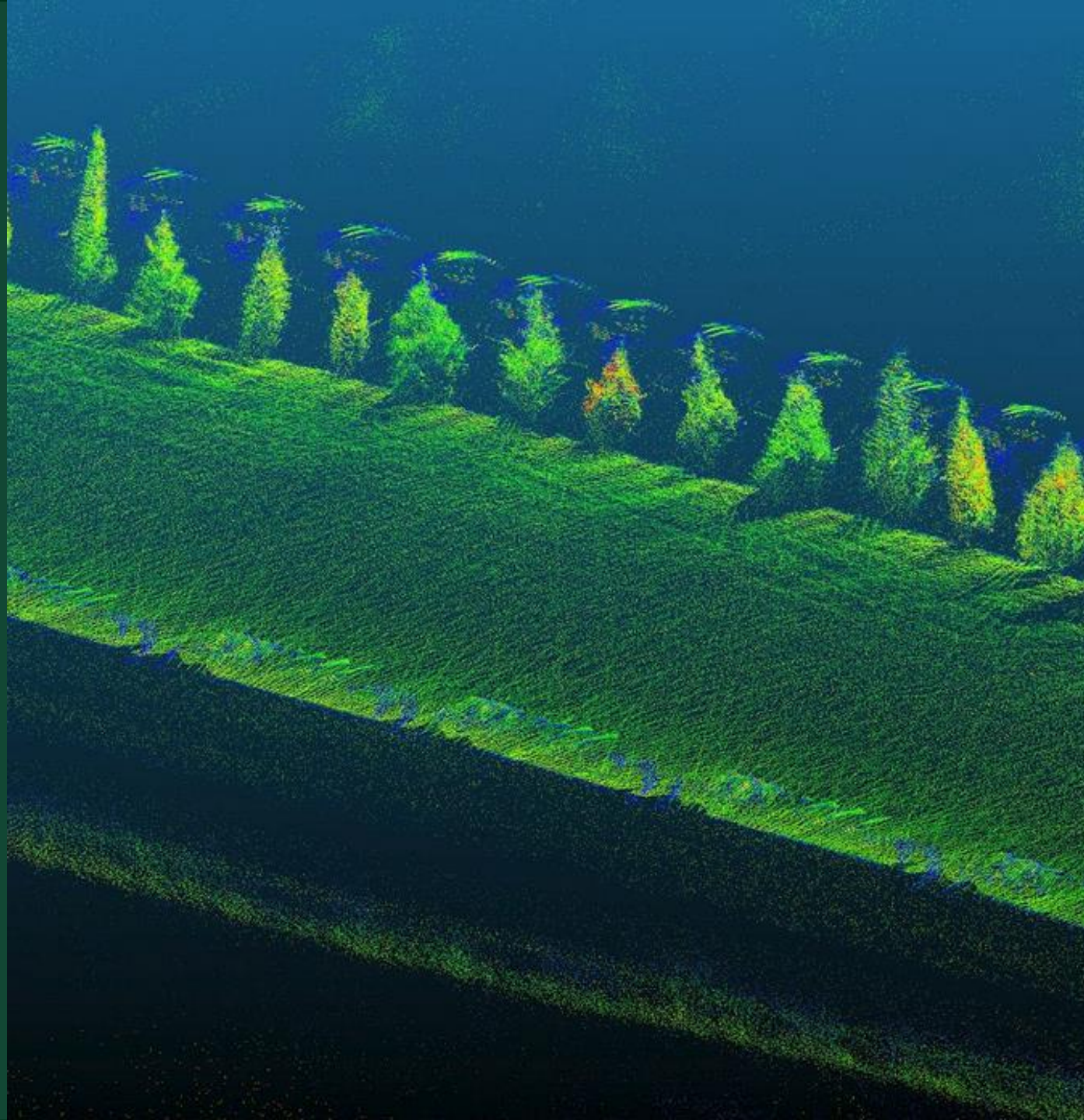
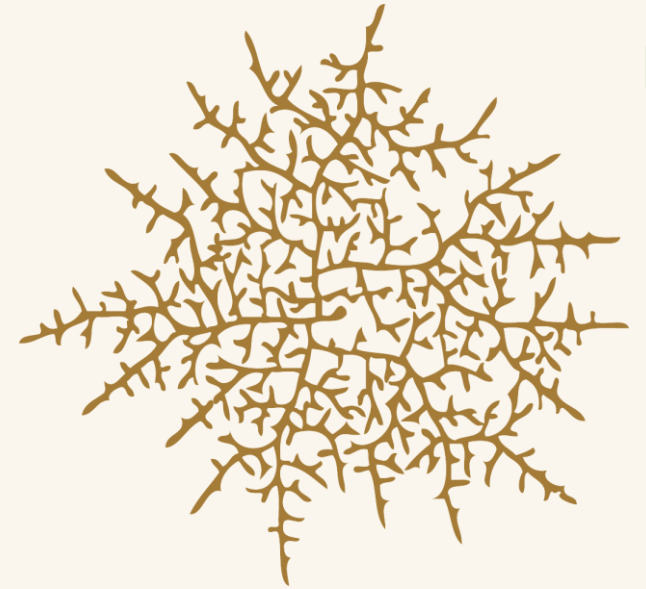


# PARTNERS IN COMMUNITY FORESTRY

2024 CONFERENCE



# Modeling Solutions for Air Quality



PRESENTED BY:

**Mei Visco**

Designer, Hyphae Design Laboratory  
[mei@hyphae.net](mailto:mei@hyphae.net)

# AGENDA

**Evidence  
Based  
Design**

**Prescott  
Greening**

**Modeling  
Pollution**

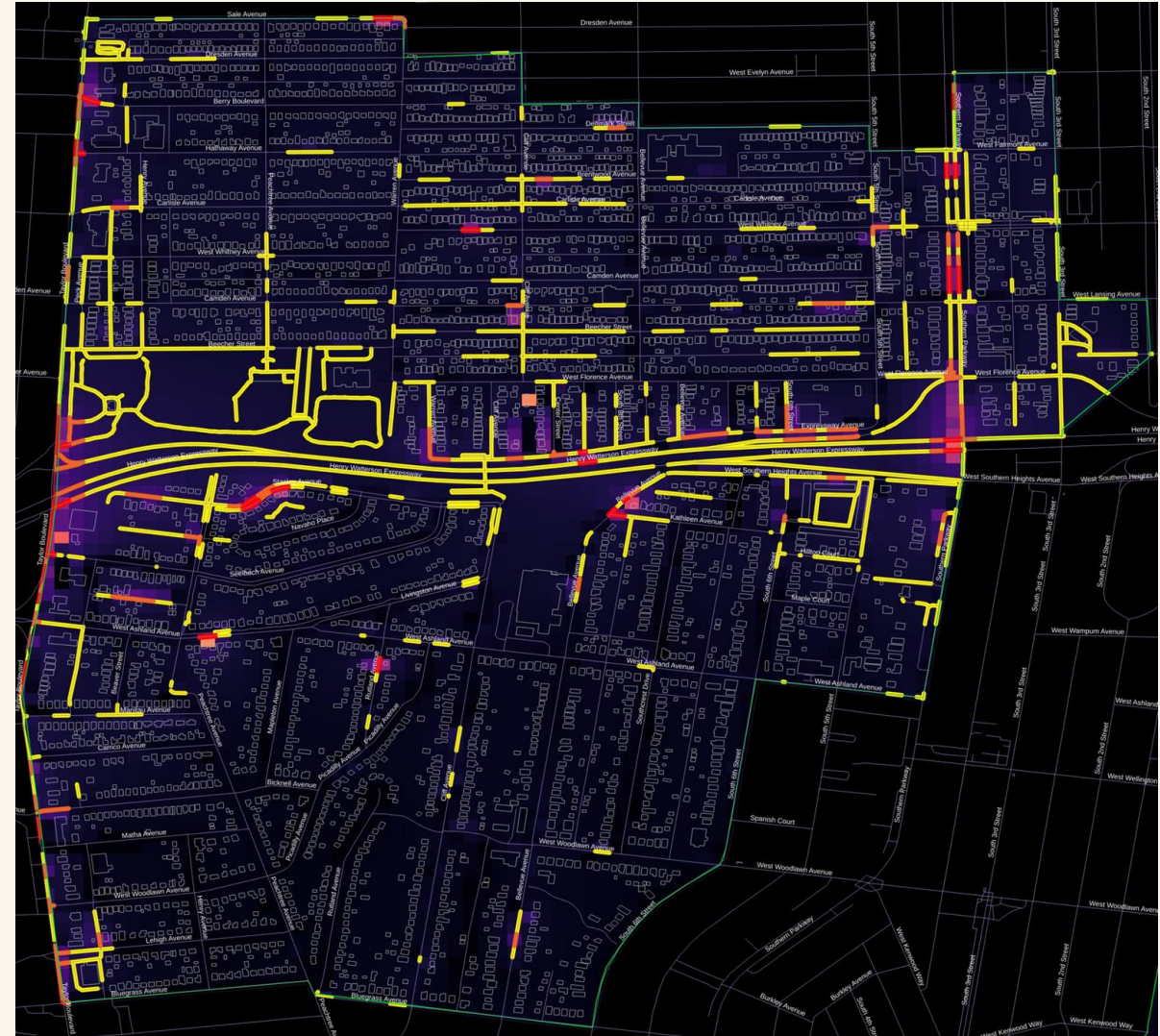
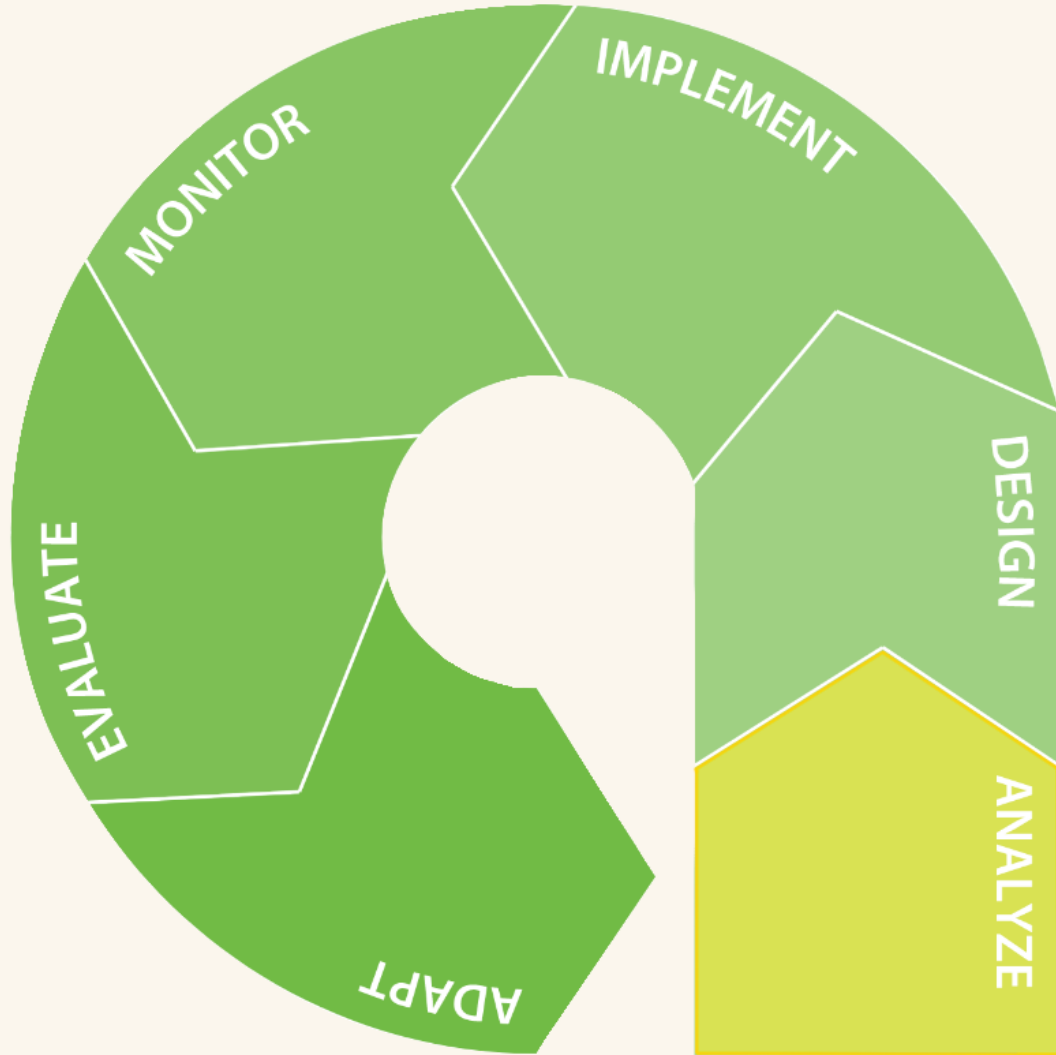
**Vegetated  
Buffers**

**Prescott  
Concept  
Designs**

**Summary**



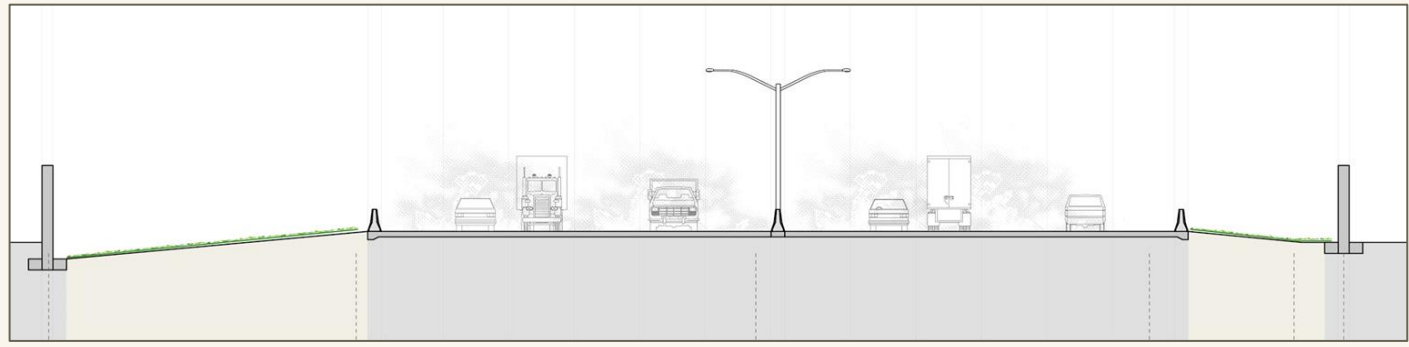
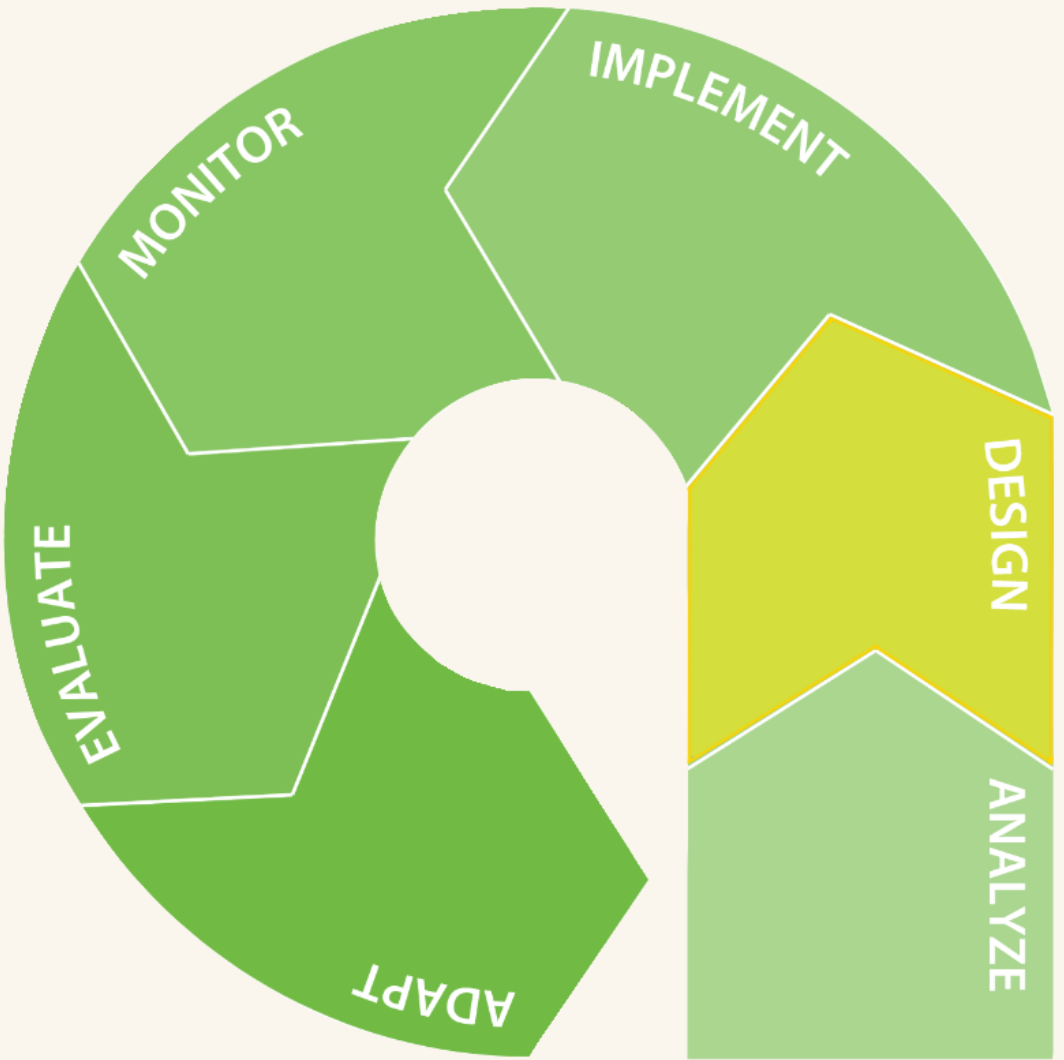
# Evidence Based Design



Analyze where pollution is the worst

PARTNERS IN COMMUNITY FORESTRY 2024 CONFERENCE

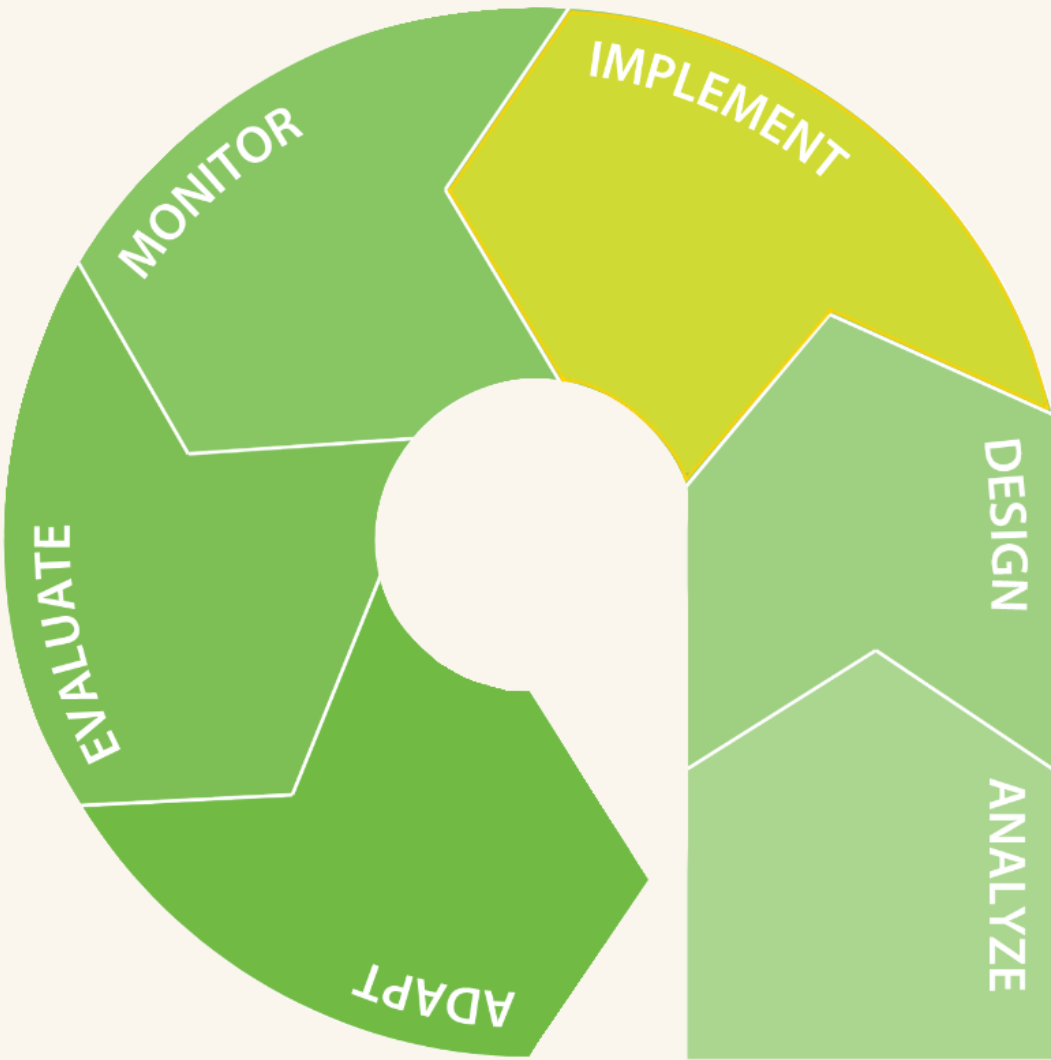
# Evidence Based Design



Design an intervention

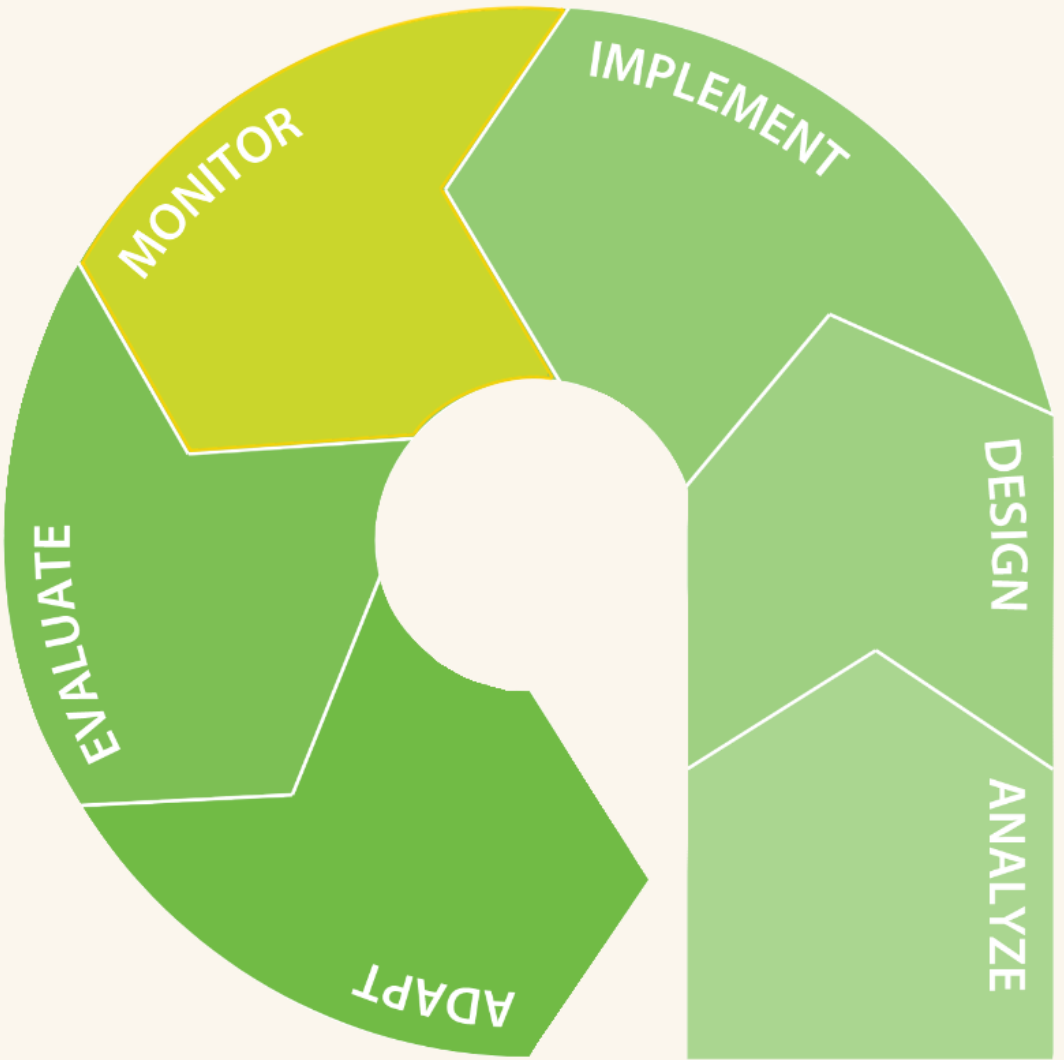


# Evidence Based Design



Implement/Install the design

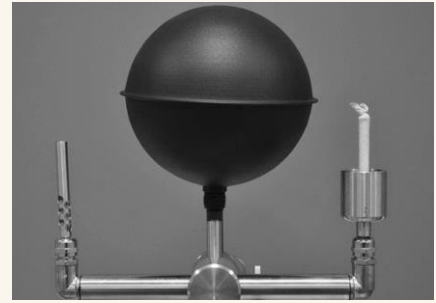
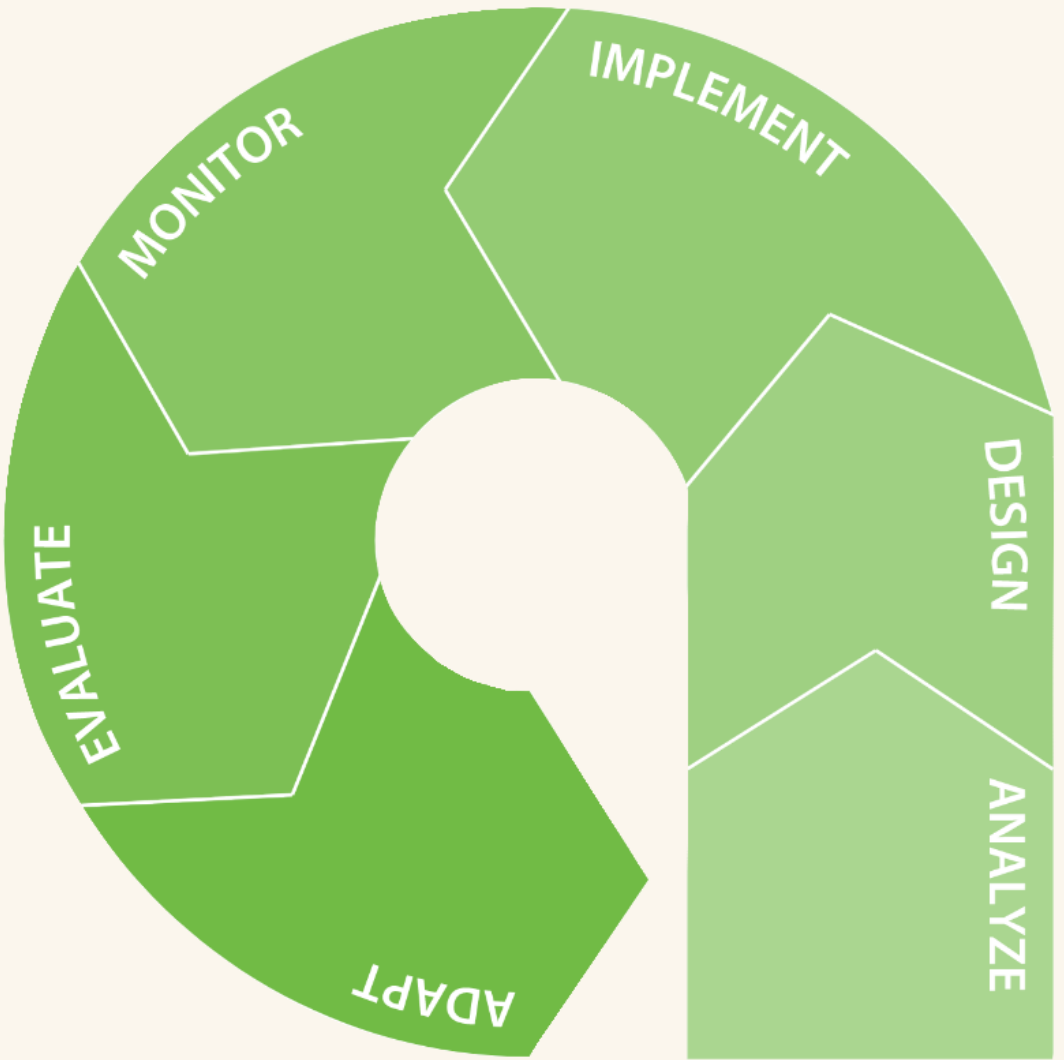
# Evidence Based Design



Monitor the results

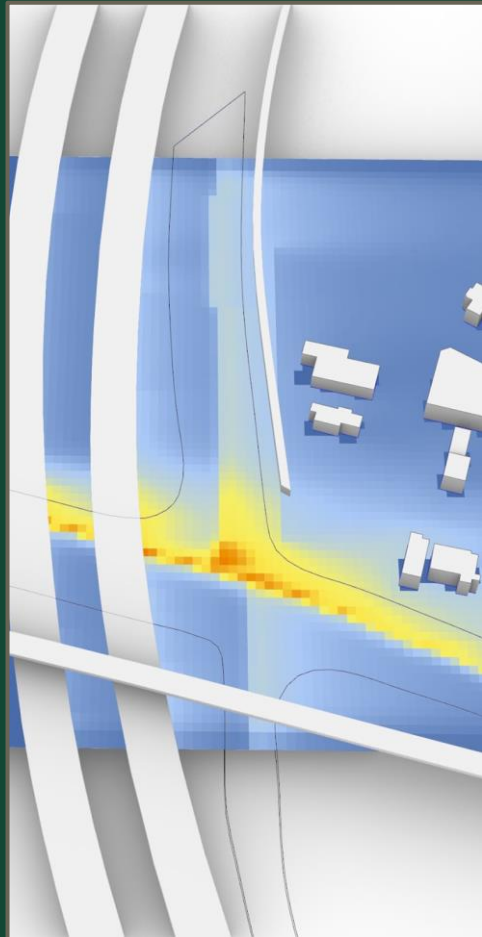


# Evidence Based Design

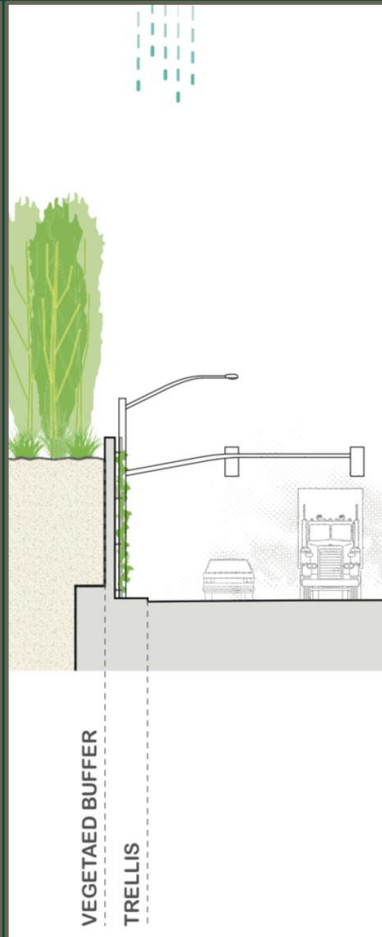




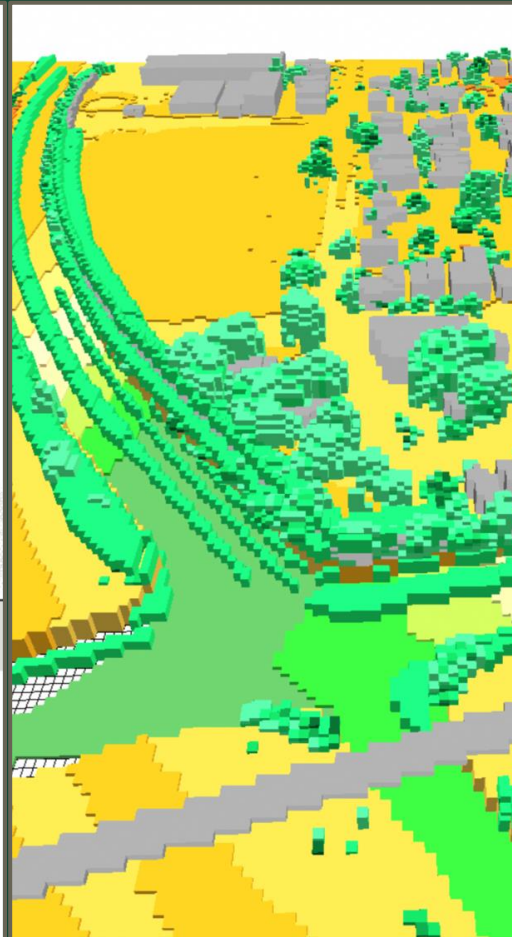
# Prescott Greening Project



Model Pollution



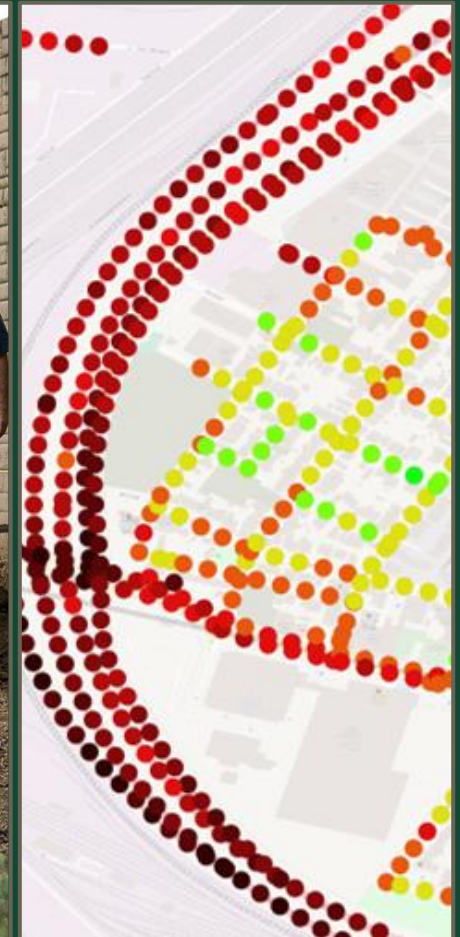
Design



Model Solutions



Build Interventions

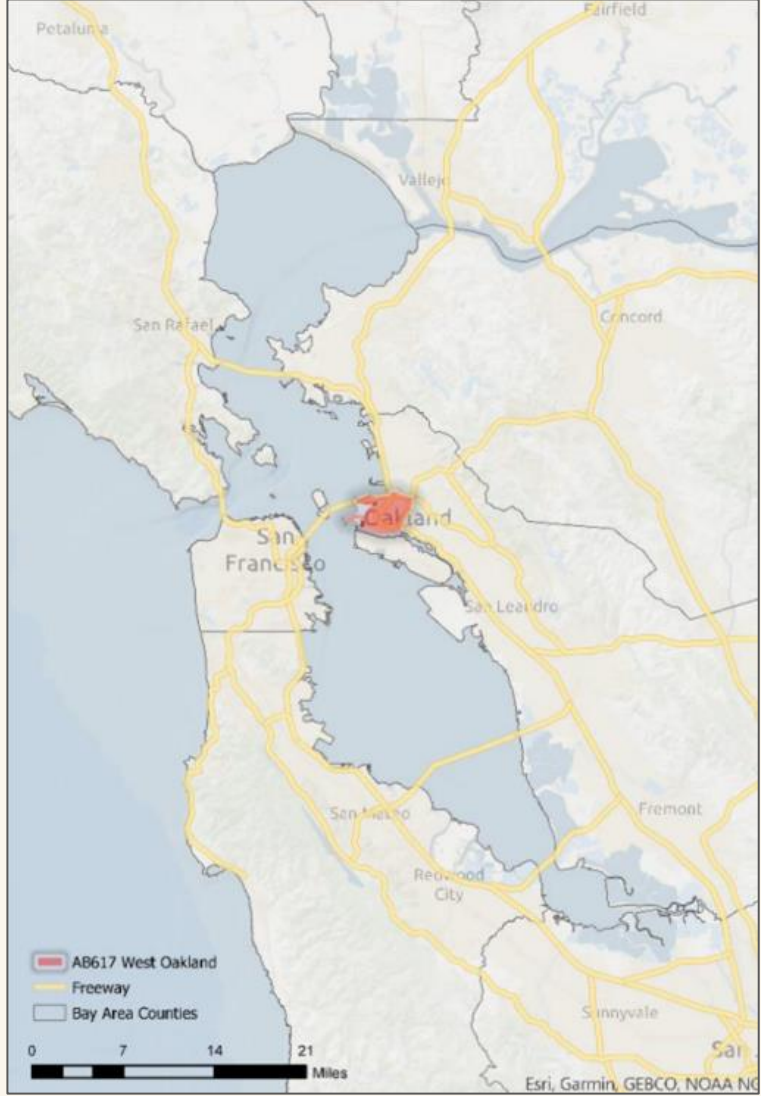


Monitor Results



# WEST OAKLAND

FINAL



## OWNING OUR AIR

The West Oakland Community Action Plan – Volume 1: The Plan

October 2019

A joint project of the Bay Area Air Quality Management District and West Oakland Environmental Indicators Project



# What we need to model how a green intervention impacts exposure risk

Change in Air Pollution Level =

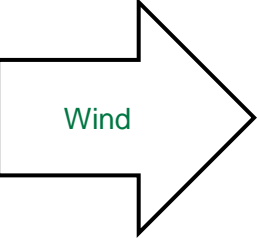
Physical Environment



Pollution Sources



How Air Moves through the environment



Different Buffer Designs





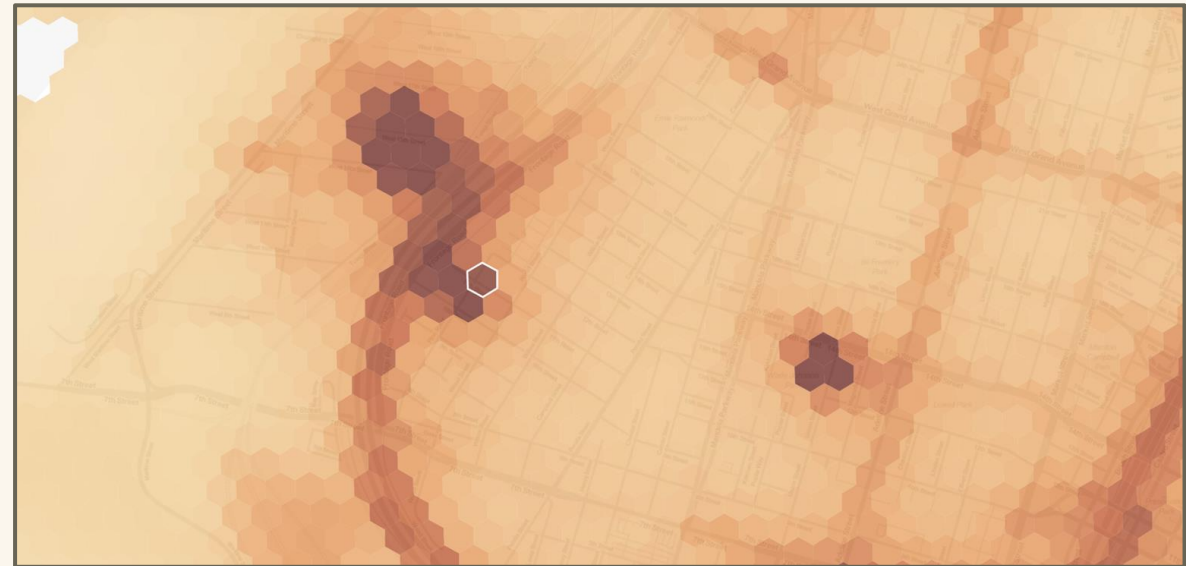
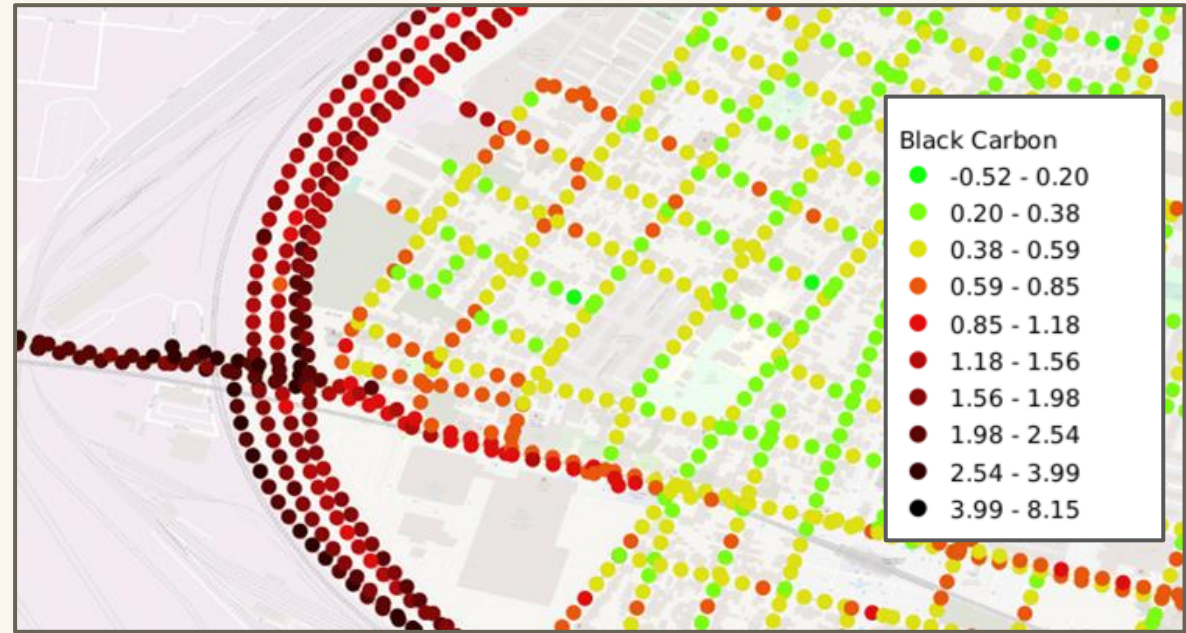
# Collect LiDAR data of the structures and trees





# Bridging scales

We want our simulations of site-scale interventions to exist in the context of larger models created by the Air District



# VEGETATED BUFFERS

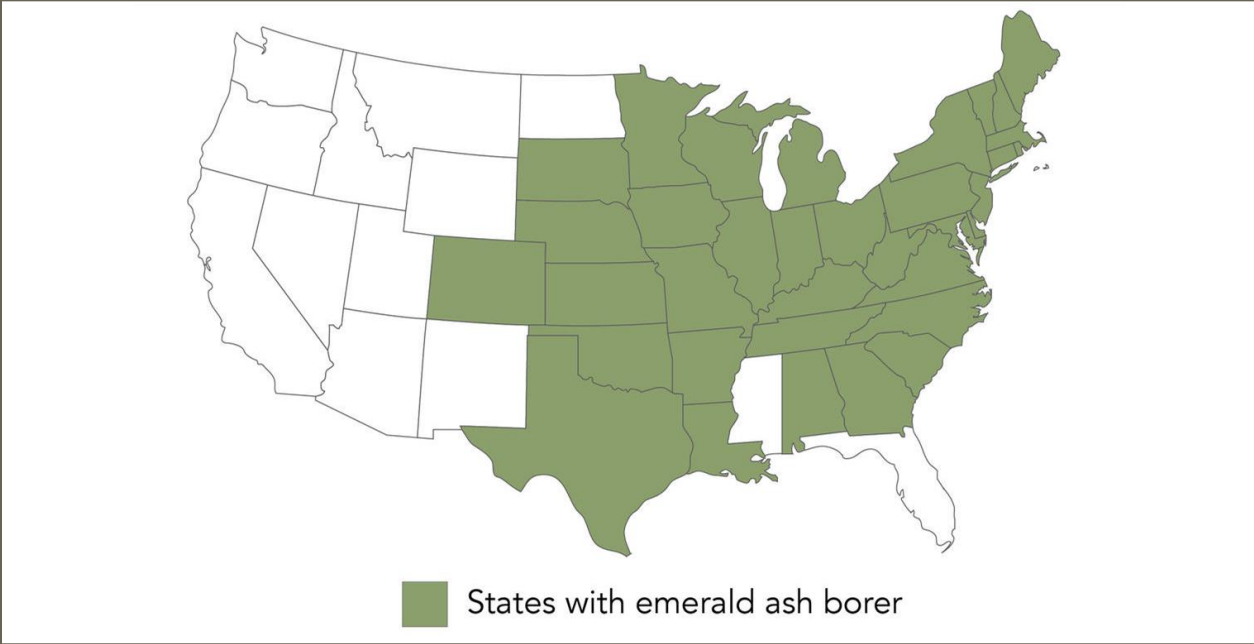
Variable to test



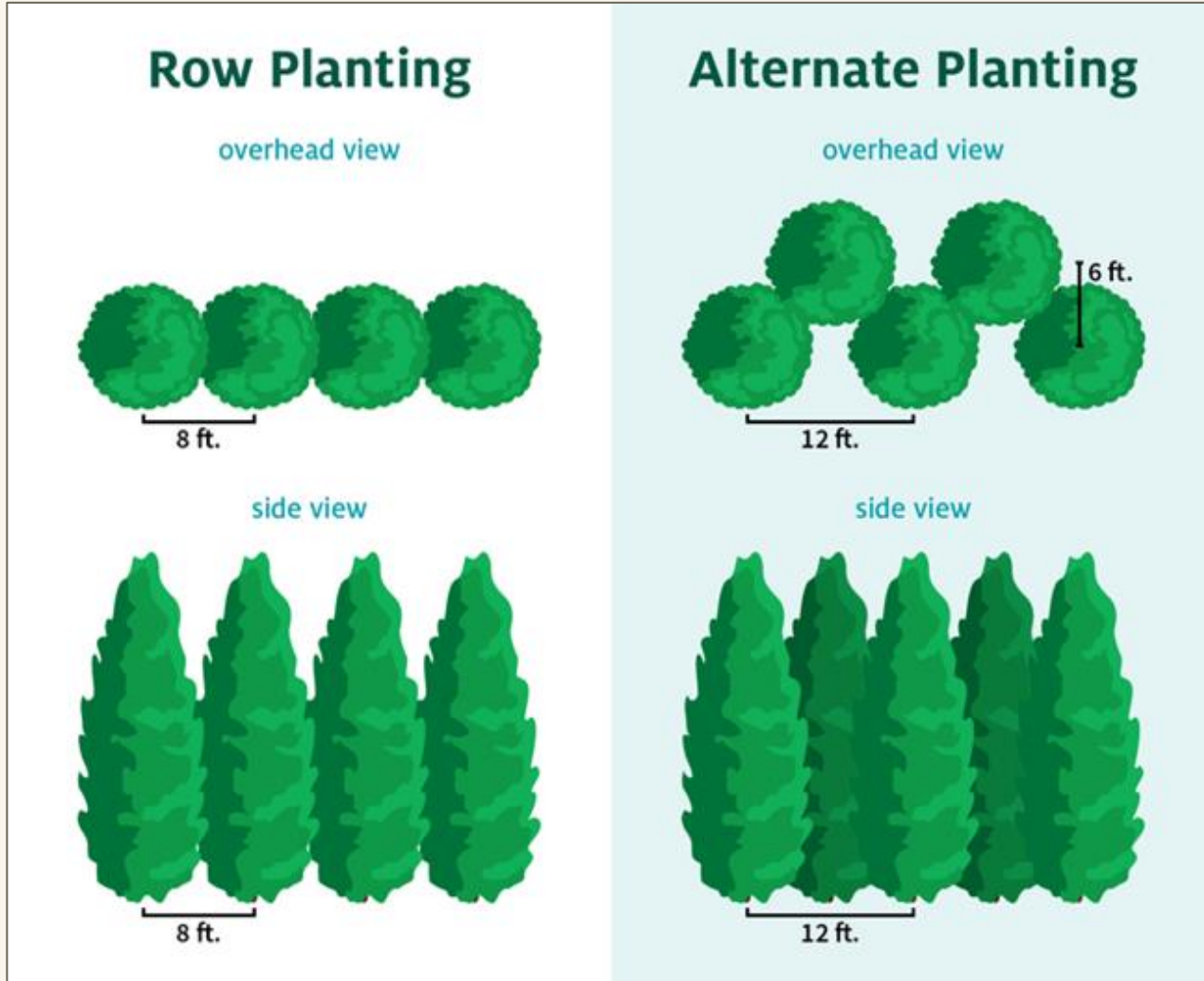




## Counties where the Emerald Ash Borer had killed more trees had more cardiovascular-related deaths



# Vegetated Buffers: Using trees as technology





# According to the EPA, these are the important factors to roadside vegetation design:

## Barrier Length

Extend at least 50 meters past area of concern to limit downwind concentrations

## Height

At least 4 meters of height will prevent downwind spread

## Porosity

High porosity leads to pollution stagnation, low porosity is similar to a wall

## Coverage

No gaps between or below trees is ideal. Bushes can be used to block low gaps

## Thickness

5-10 meters recommended, but effectiveness impacted by porosity of barrier

Effective Barrier

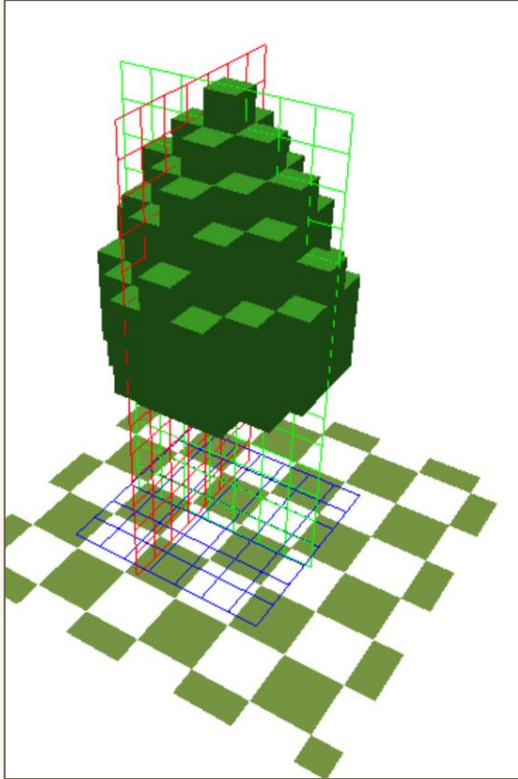
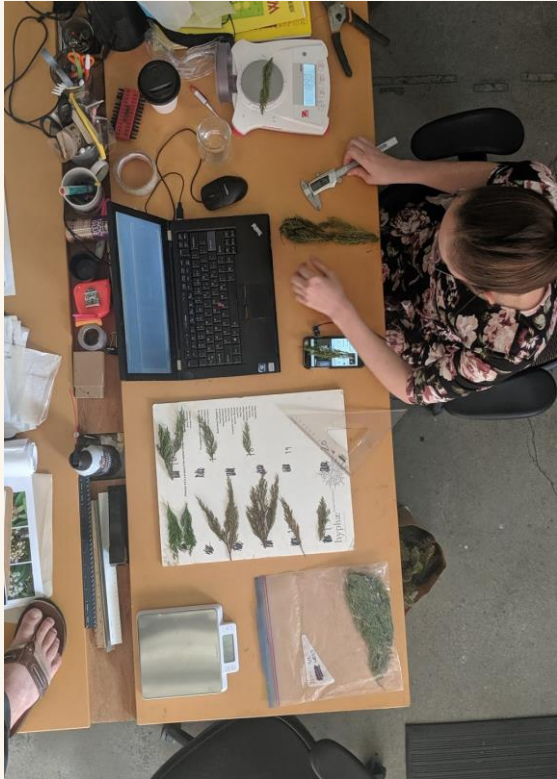
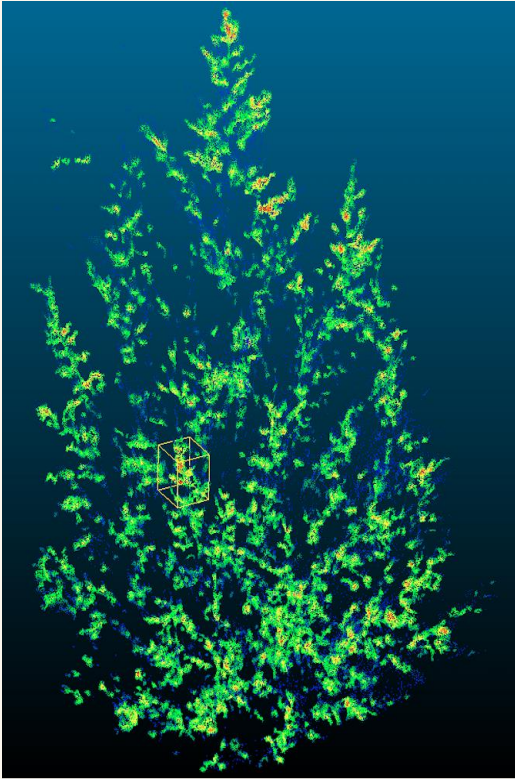
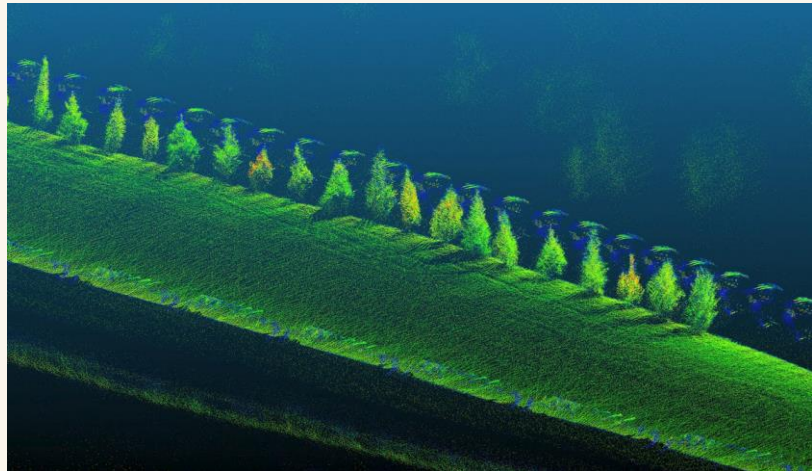


Ineffective Barrier





# Measuring the leaf area density of trees to input into our models

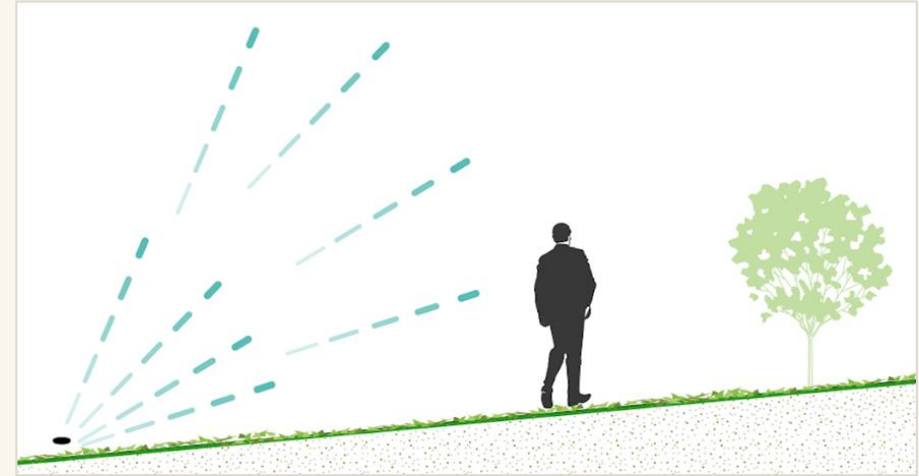




# Planting a vegetated buffer closer to the source of pollution is more effective



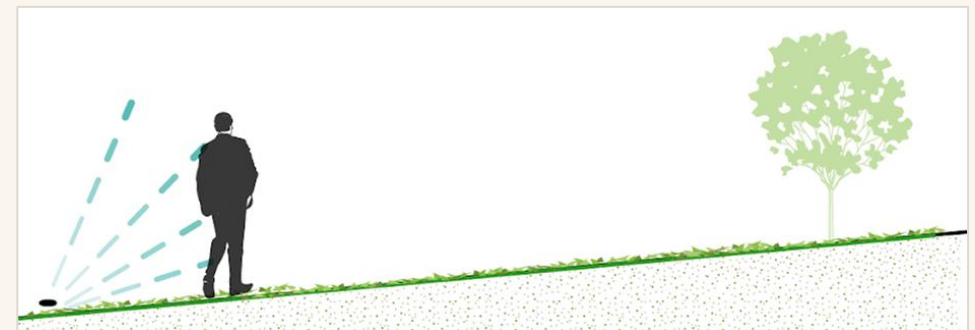
Less effective at blocking



Less effective at blocking



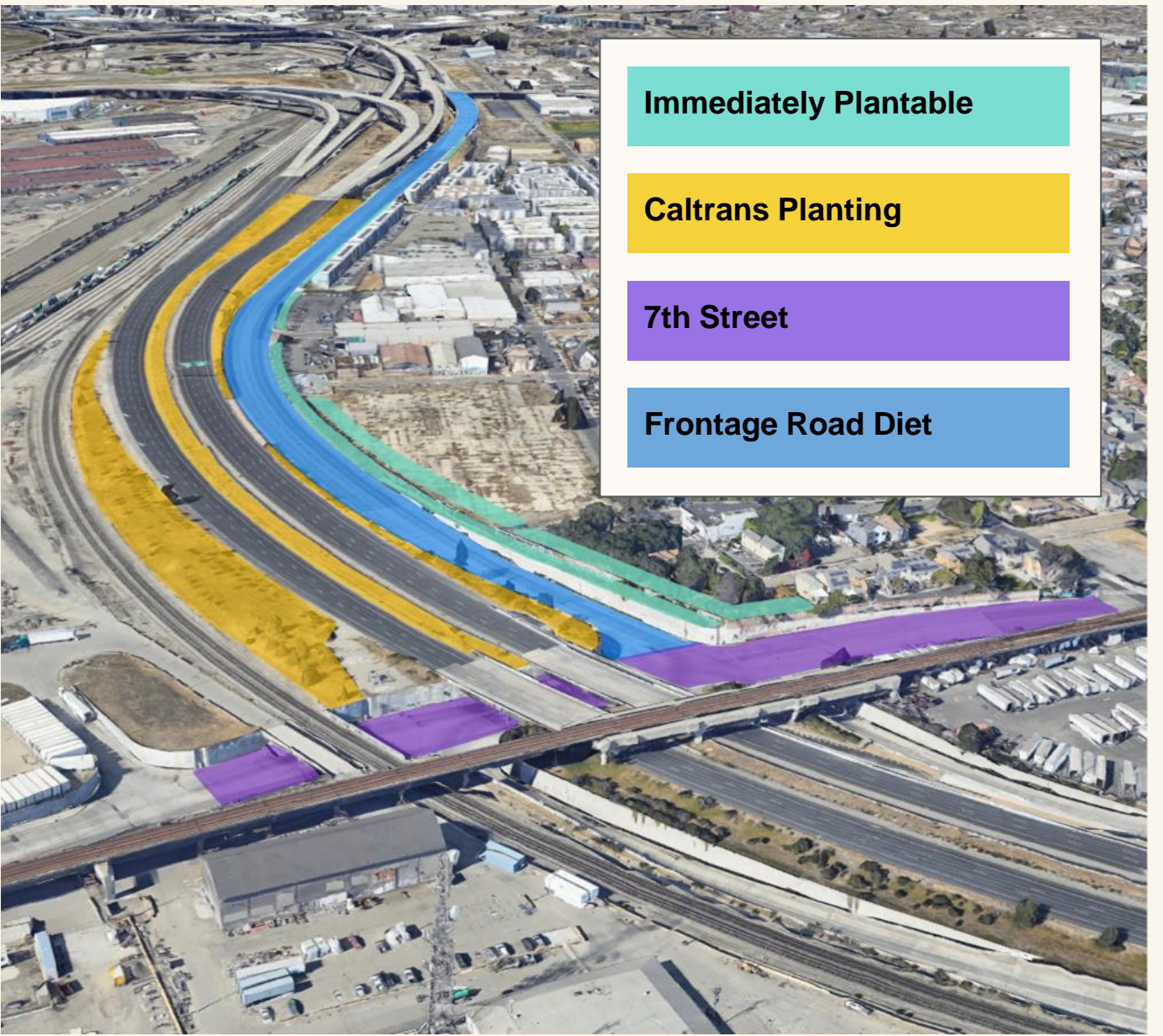
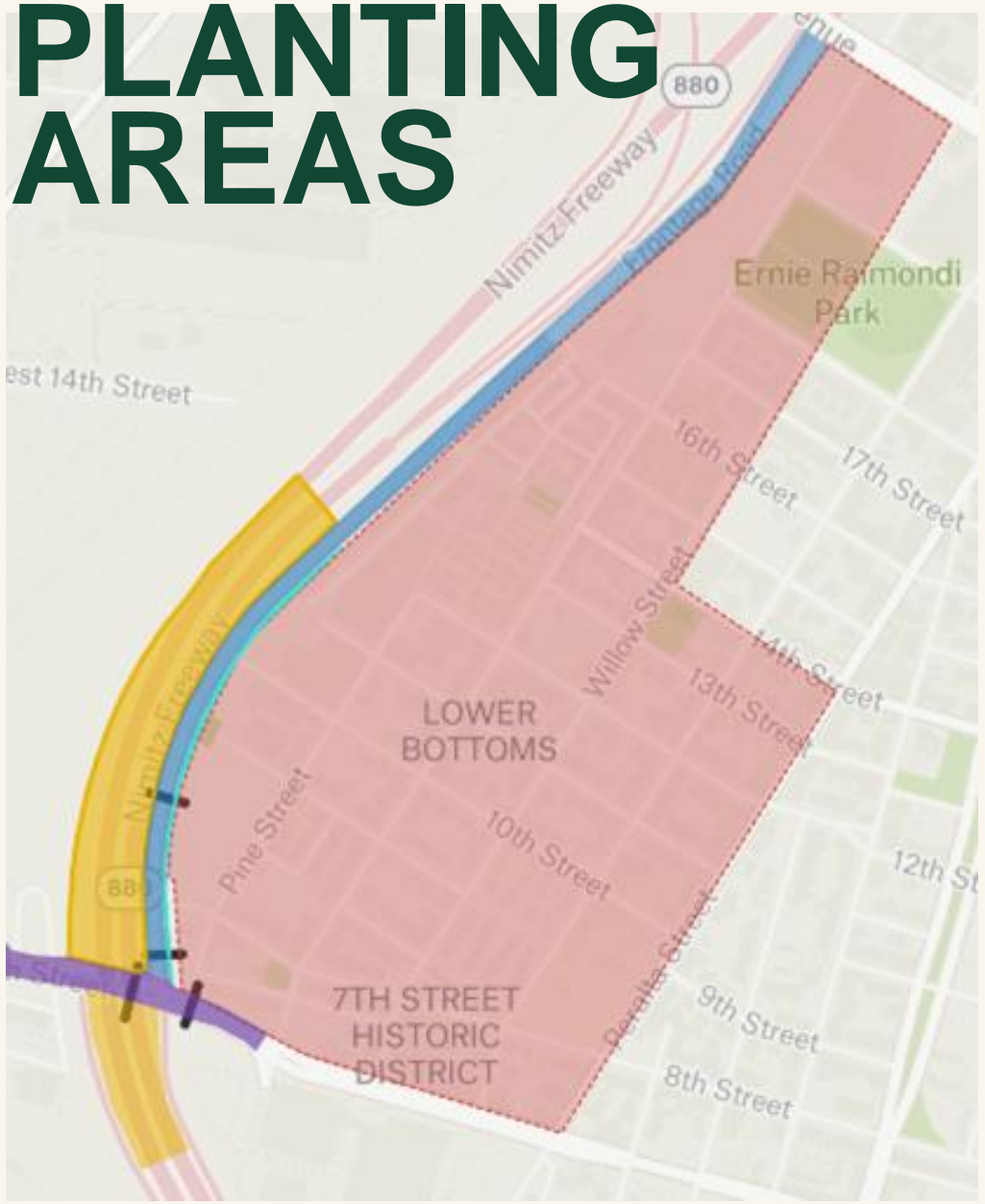
More effective at blocking



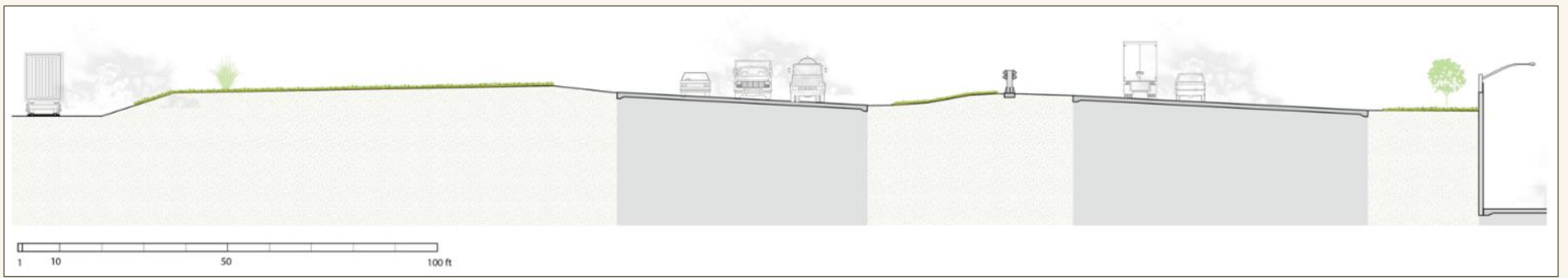
More effective at blocking



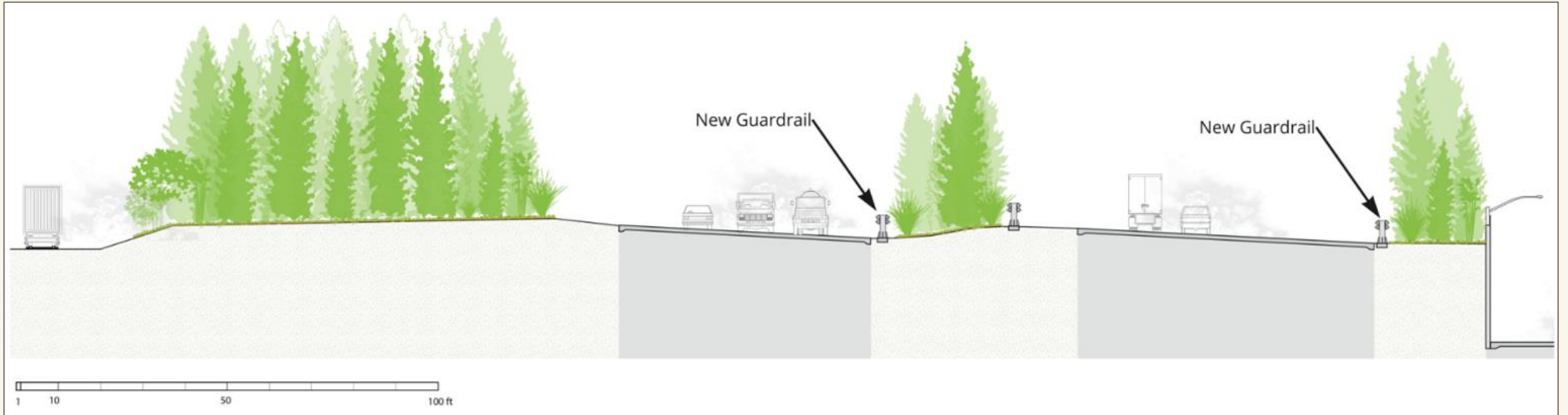
# PLANTING AREAS



- Immediately Plantable
- Caltrans Planting
- 7th Street
- Frontage Road Diet



Caltrans Freeway ROW - Existing



Caltrans Freeway ROW - Proposed

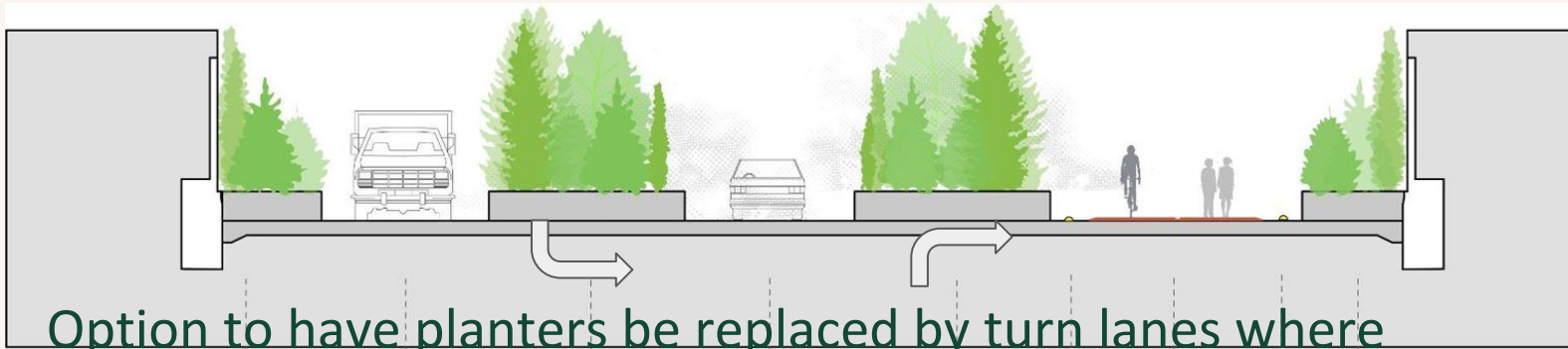




Existing



Proposed



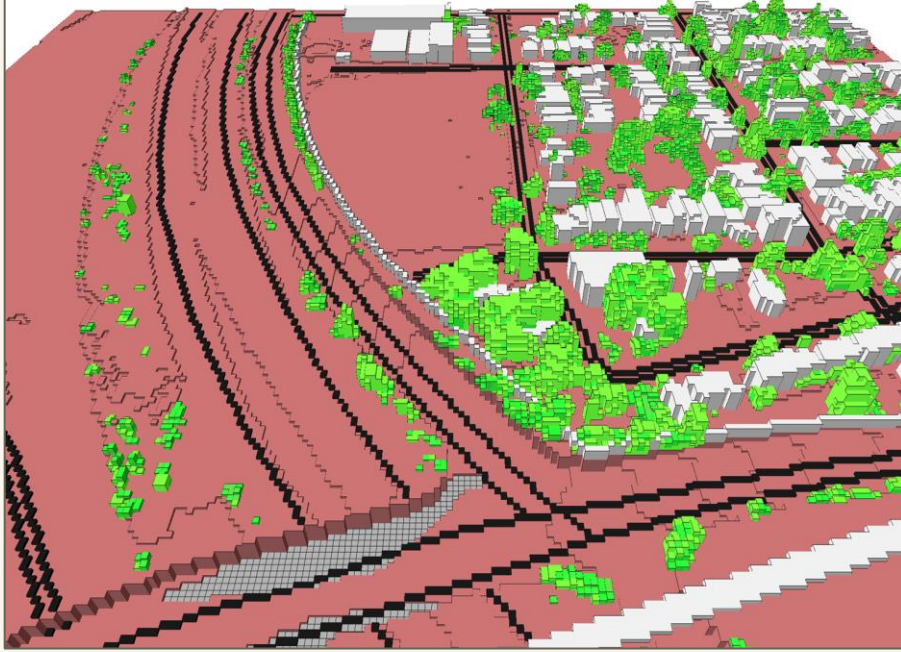
Option to have planters be replaced by turn lanes where necessary



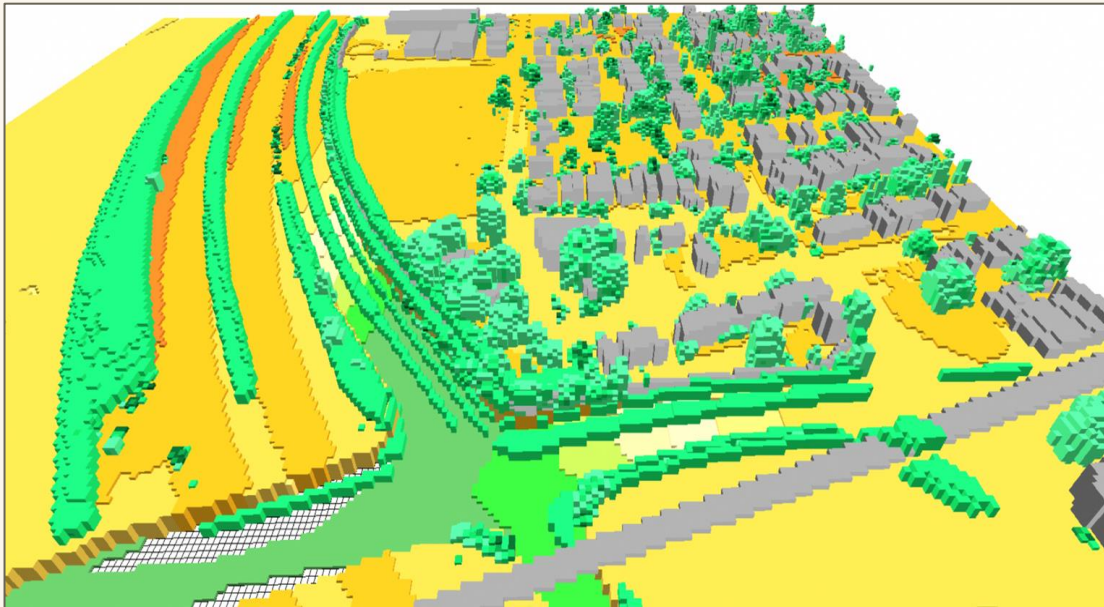
# Exploring different buffer sizes and placements

# Exploring lane reduction





# Existing Vegetation

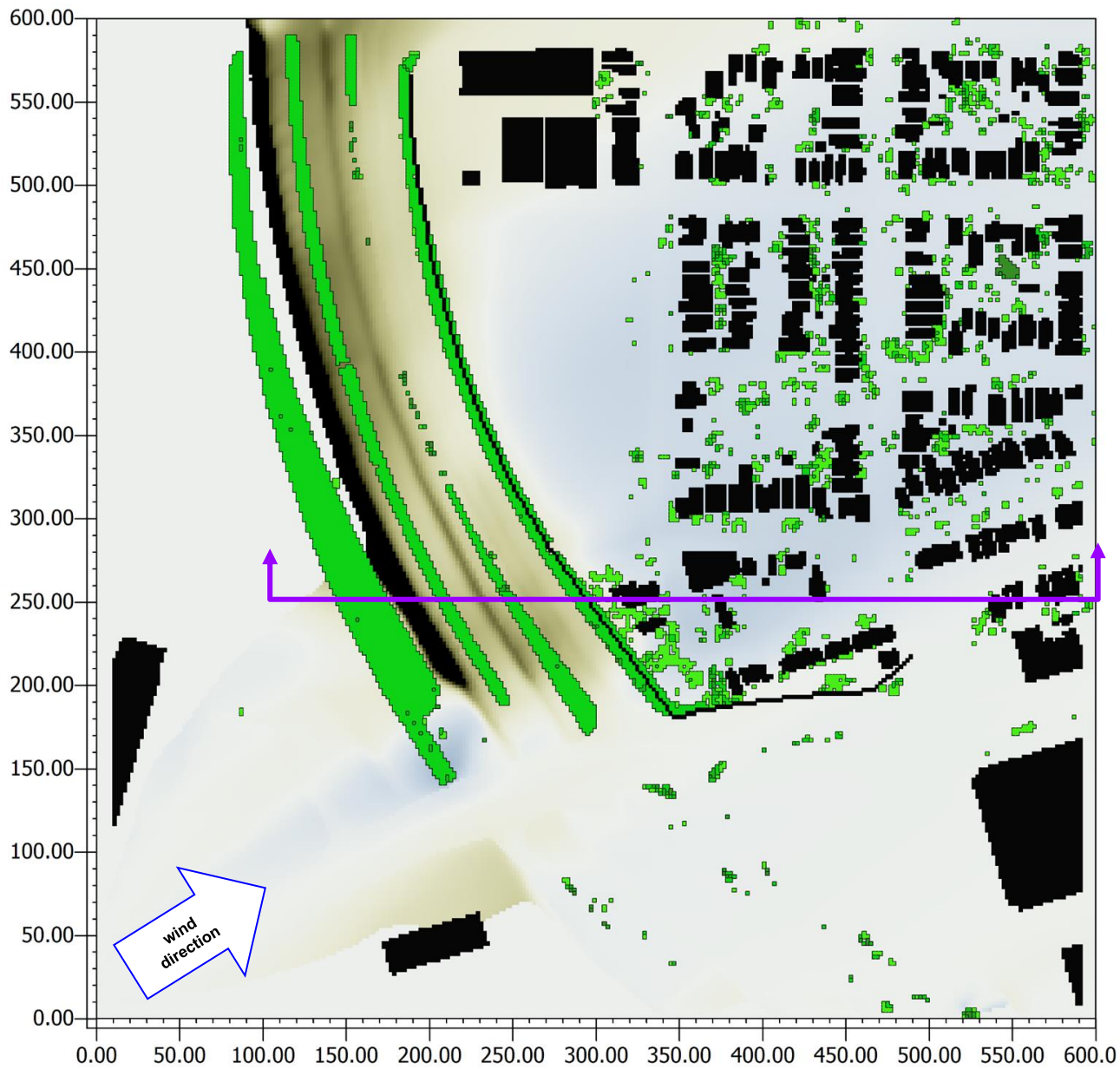


# Adding in proposed vegetation

# Simulation of Pollution Removal

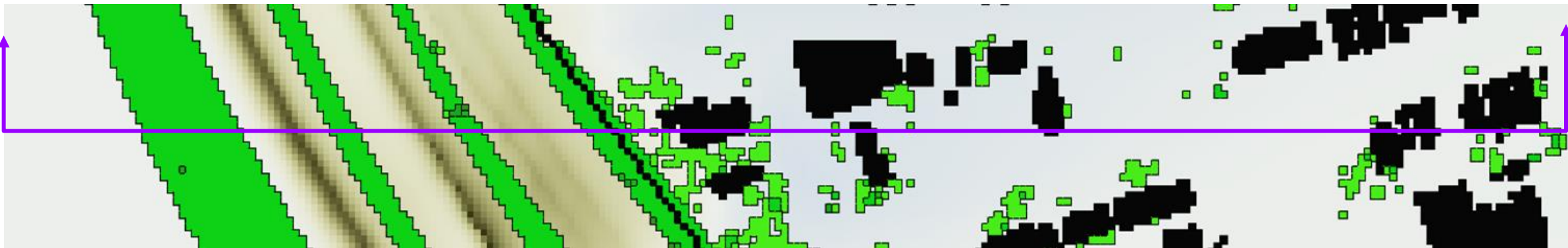
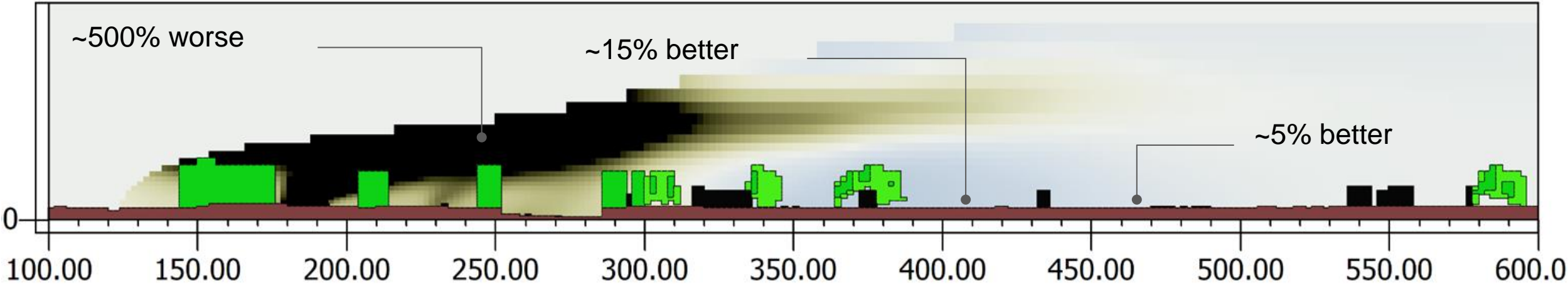
Bluer areas are where the pollution is better than existing

Darker areas are where pollution is worse





# Cross section view



# What things should we can choose to prioritize in designing the place we live?



**Habitat**



**Stormwater**



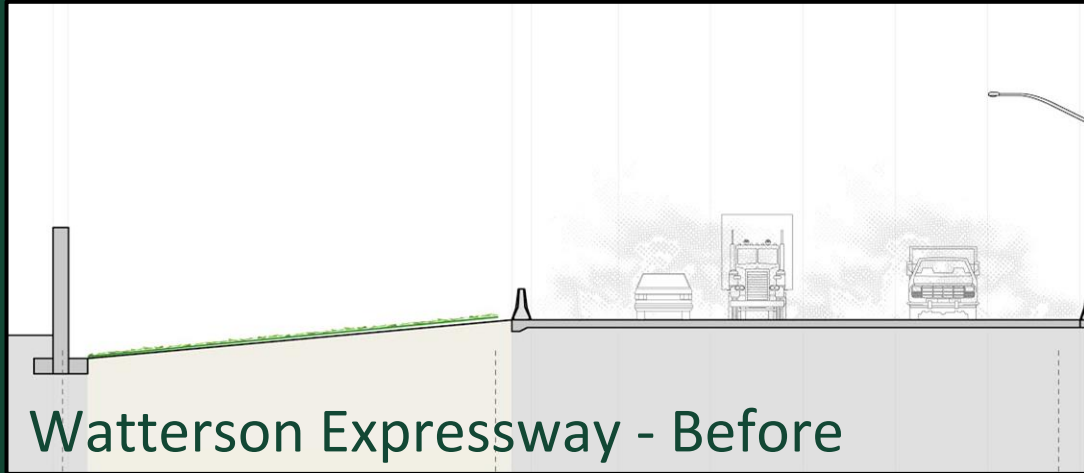
**Aesthetics**



**Road safety**



# Implementation



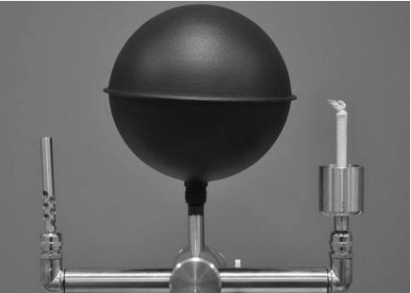
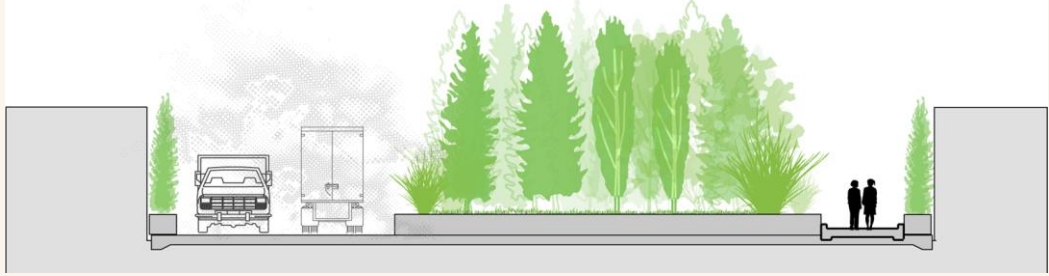
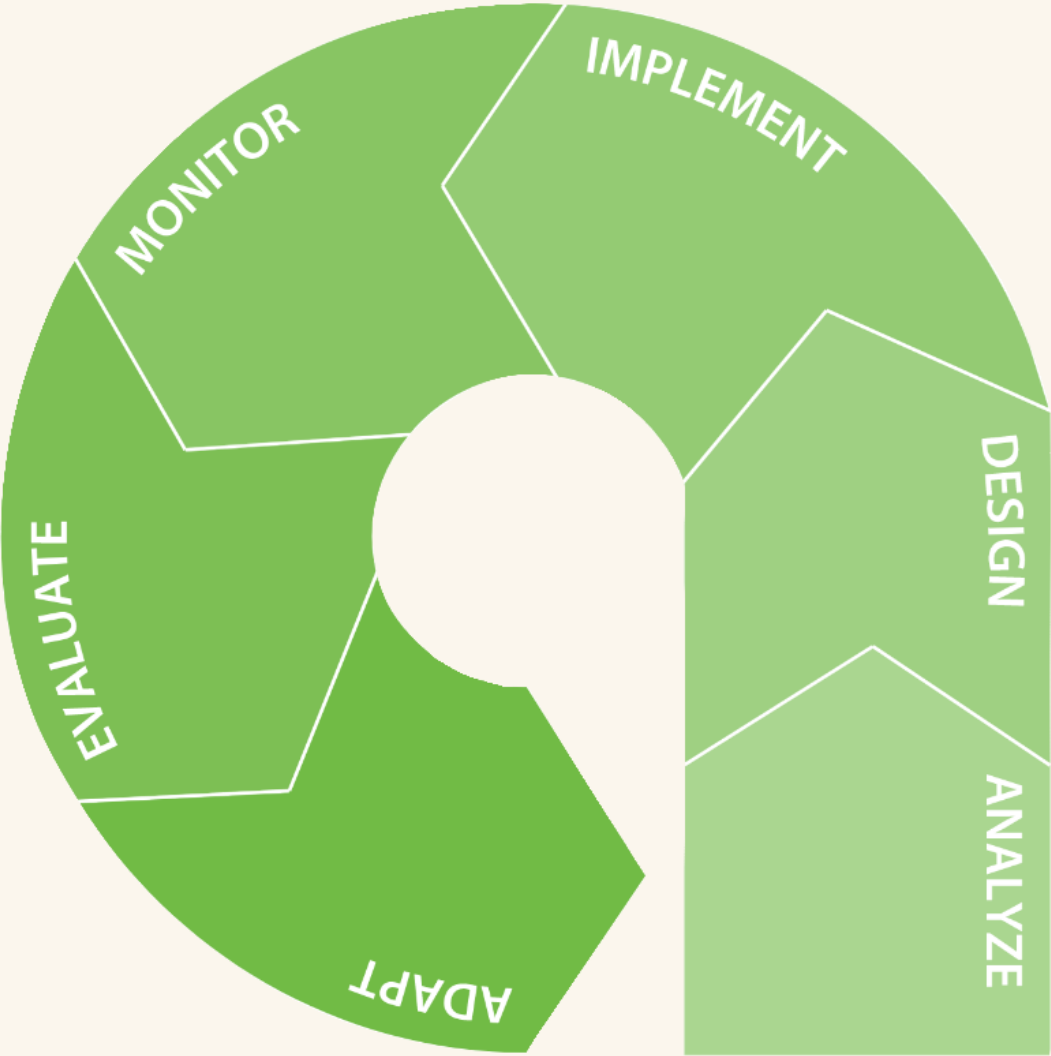


# Watterson Expressway Planting



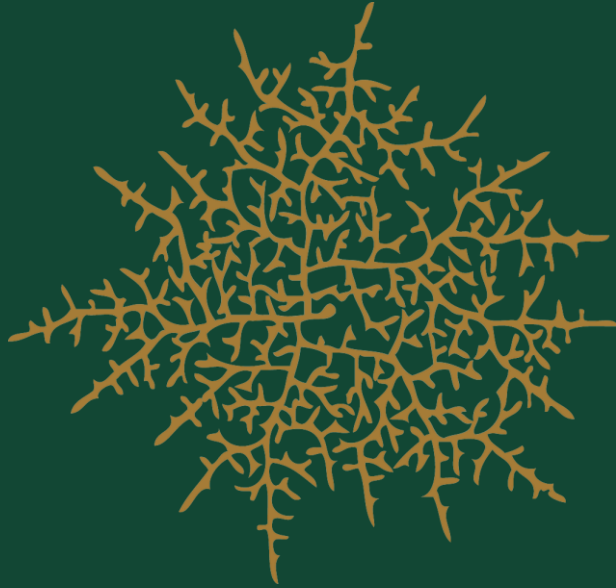


# Summary



# Thank you.

[mei@hyphae.net](mailto:mei@hyphae.net)





# CEUs

For ISA CEUs, record the code to the right for each session.

Post conference, you can submit all Your CEU codes within the Conference app.

Sign-in sheets for Society of American Foresters (SAF) CFE credits are available at the registration desk post conference.

## Modeling Solutions for Extreme Heat and Air Quality

Speakers:

Mei Visco



**PP-24-919**  
**.75 A, BCMA-M, MS**