

PARTNERS IN COMMUNITY FORESTRY

2024 CONFERENCE



Tree Care and Technology in Baltimore City



PRESENTED BY:

Marcus Tuah, Tree Care Manager
Kajall Hylton, GIS Coordinator

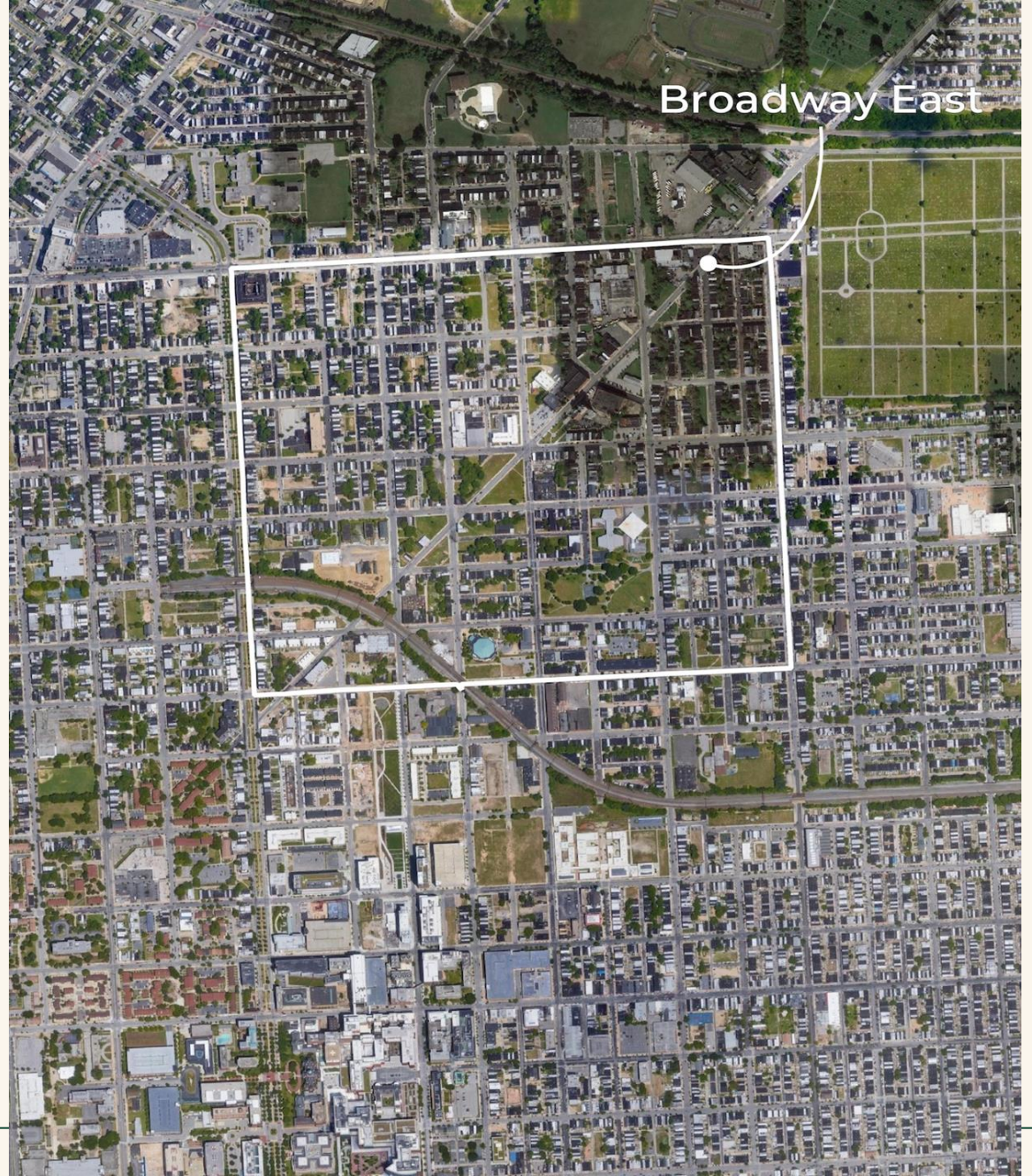
Baltimore Tree Trust

For Baltimore. ⚡

Established in 2008, the Baltimore Tree Trust is building a local workforce to protect Baltimore's urban forest and plant a greener, healthier city for all of our neighbors.

⚡ **By Baltimore.**







Maryland's 5 Million Trees Initiative

Tree Solutions Now Act of 2021

Goal to plant 5 million trees across the state by 2031

“Underserved Areas” fall within at least one of these criteria:

- a. **A neighborhood at any point in time redlined or marked as “hazardous” by the HOLC**
- a. **Average rate of unemployment exceeds the average rate of unemployment for the state**
- a. **Median household income equal to or less than 75% of the median household income for the state**

Site Assessment

Project Coordinators and Site inspectors conduct site assessments from the field to determine how optimal the space is for a tree. They also input Site prep work like new wells, stump removals, and expansions.

Outreach

After assessment is done, Outreach is performed to let the community know that we are doing tree work. This involves flyers, knocking on doors and councilman introductions.

1

2

5

3

4



BALTIMORE
TREE TRUST
2008

Site Maintenance

Maintenance crews then get a map of all the planted trees and do maintenance on a cycle schedule. If trees have died, then the maintenance crew docks the tree as dead and will remove it for future replanting.

Site Planting

After being cleared for planting crews get a map of available planting sites and plant, stake, and mulch the trees for their final transplant.

Site Prep

Site prep crews come and complete work to make a potential planting area viable for tree planting. This consists of tree pit creation, stump removal, and weed removal.

Seasonal Tree Care Goals



Summer Maintenance

Watering, mulching, and tree corrections.



Winter Maintenance

Pruning, mulching, destaking, and removing dead trees.

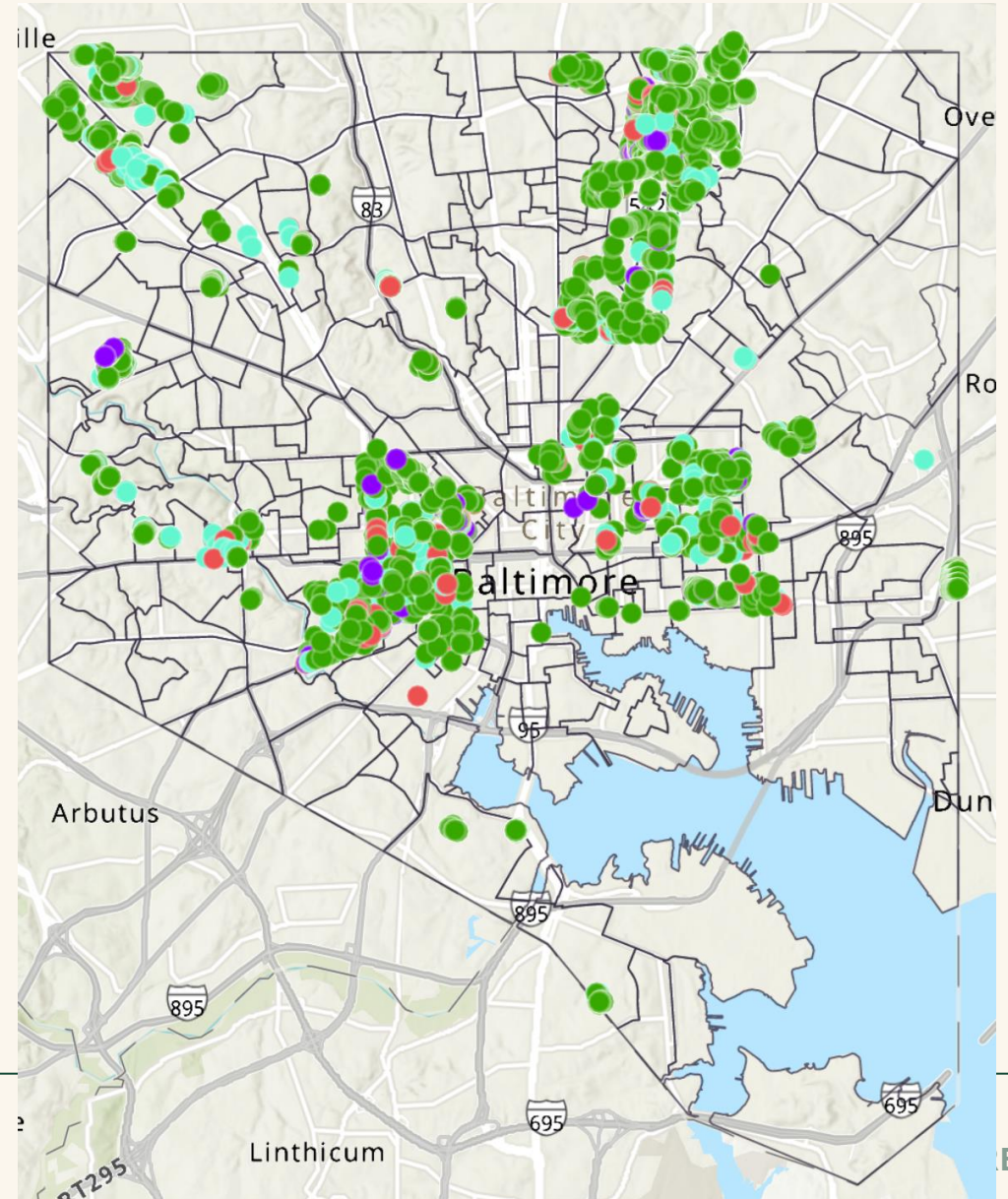
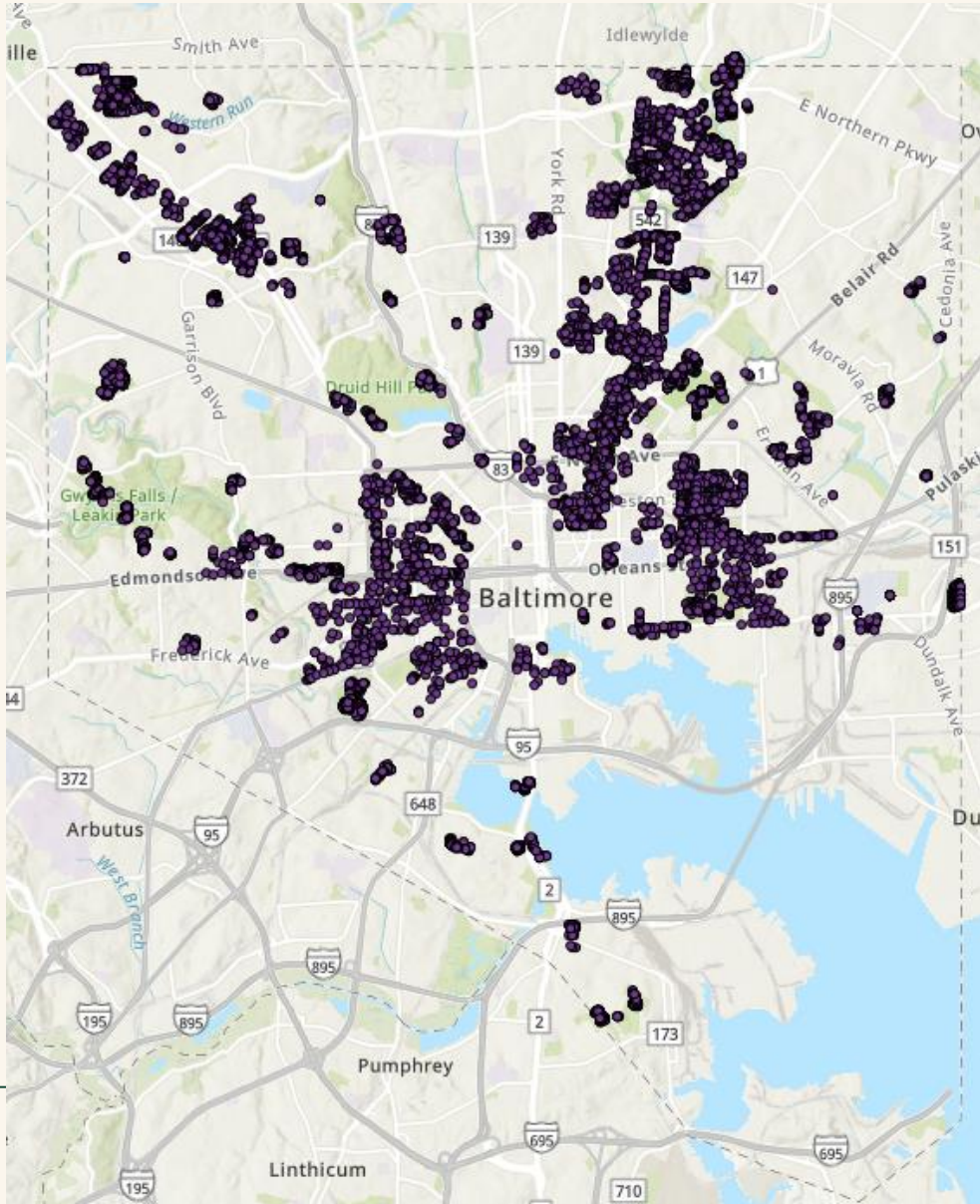


Spring & Fall Maintenance

Mix of watering and mulching, and installing deer fencing at vulnerable project sites.

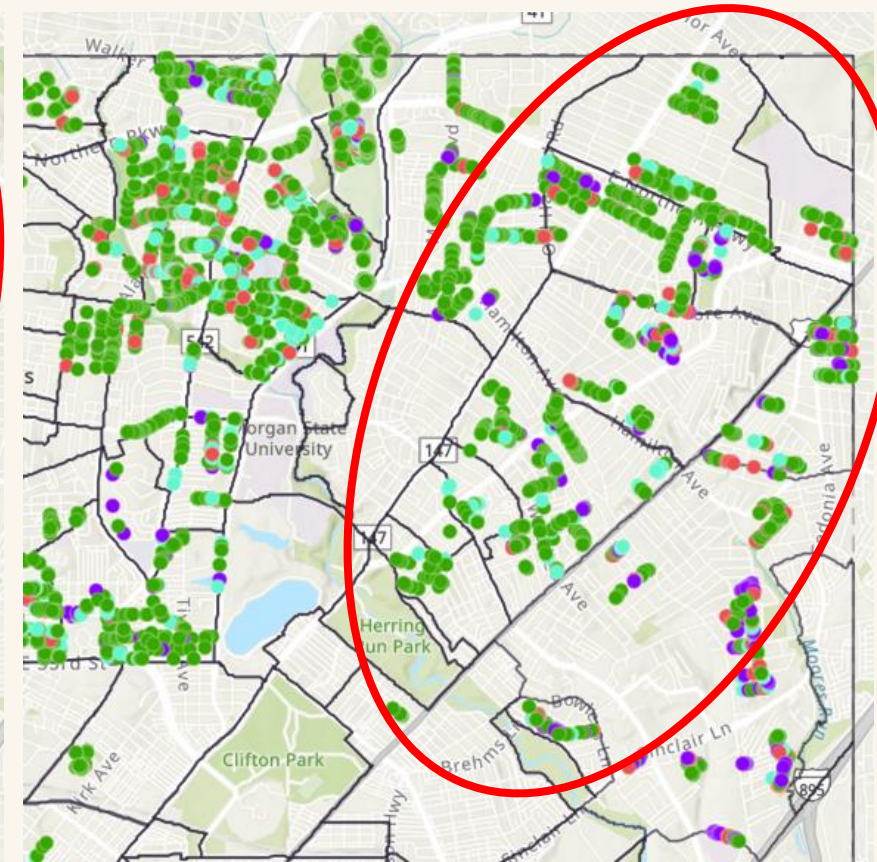
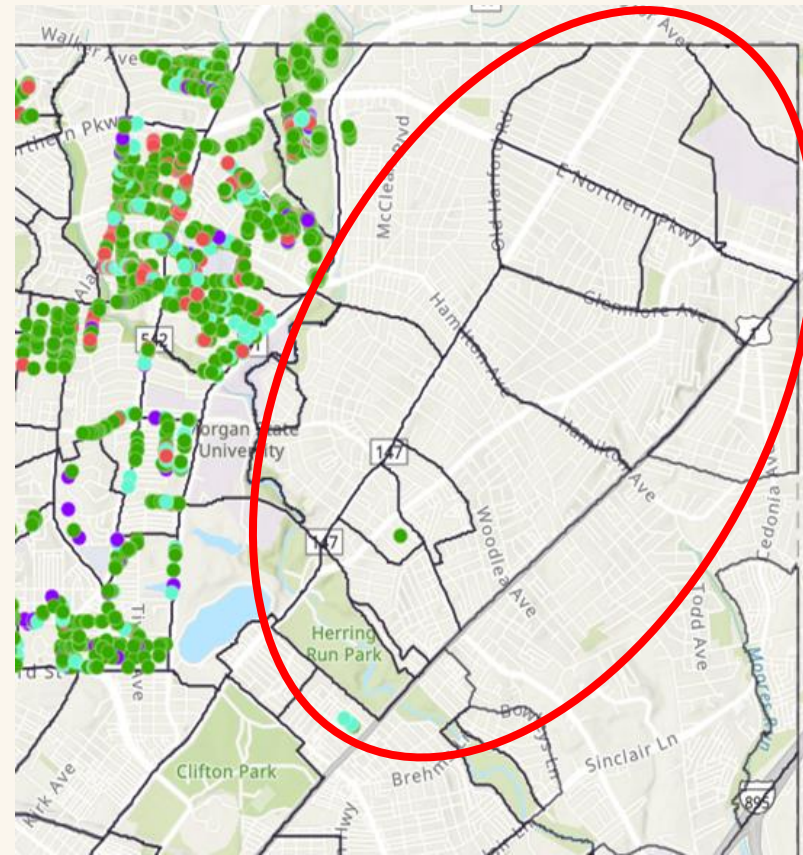
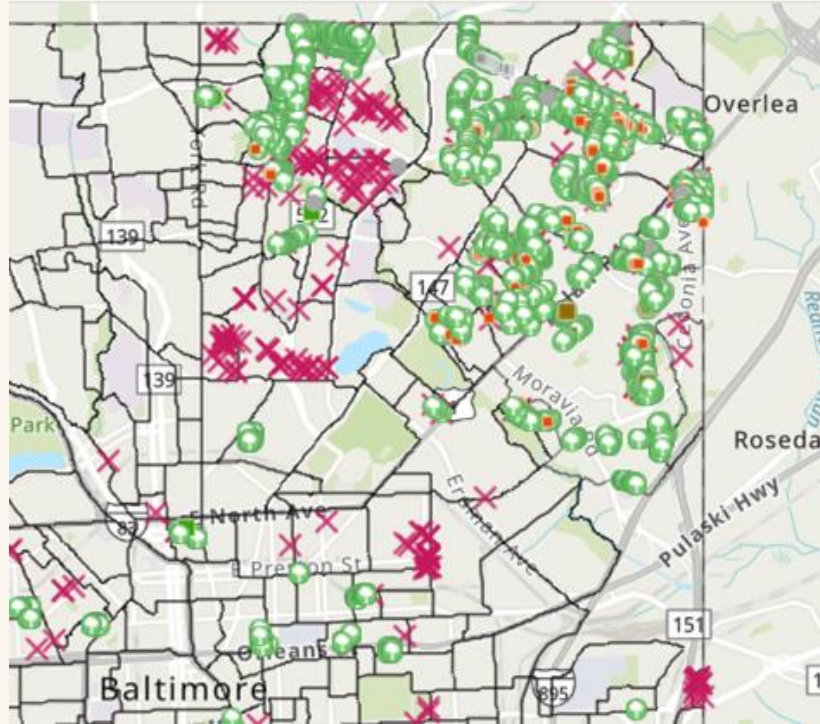


Total Inventory vs. Trees in Warranty

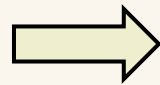


ENCE

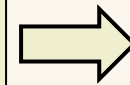
From Planting To Tree Care



**Planting Map
(Spring 2024)**

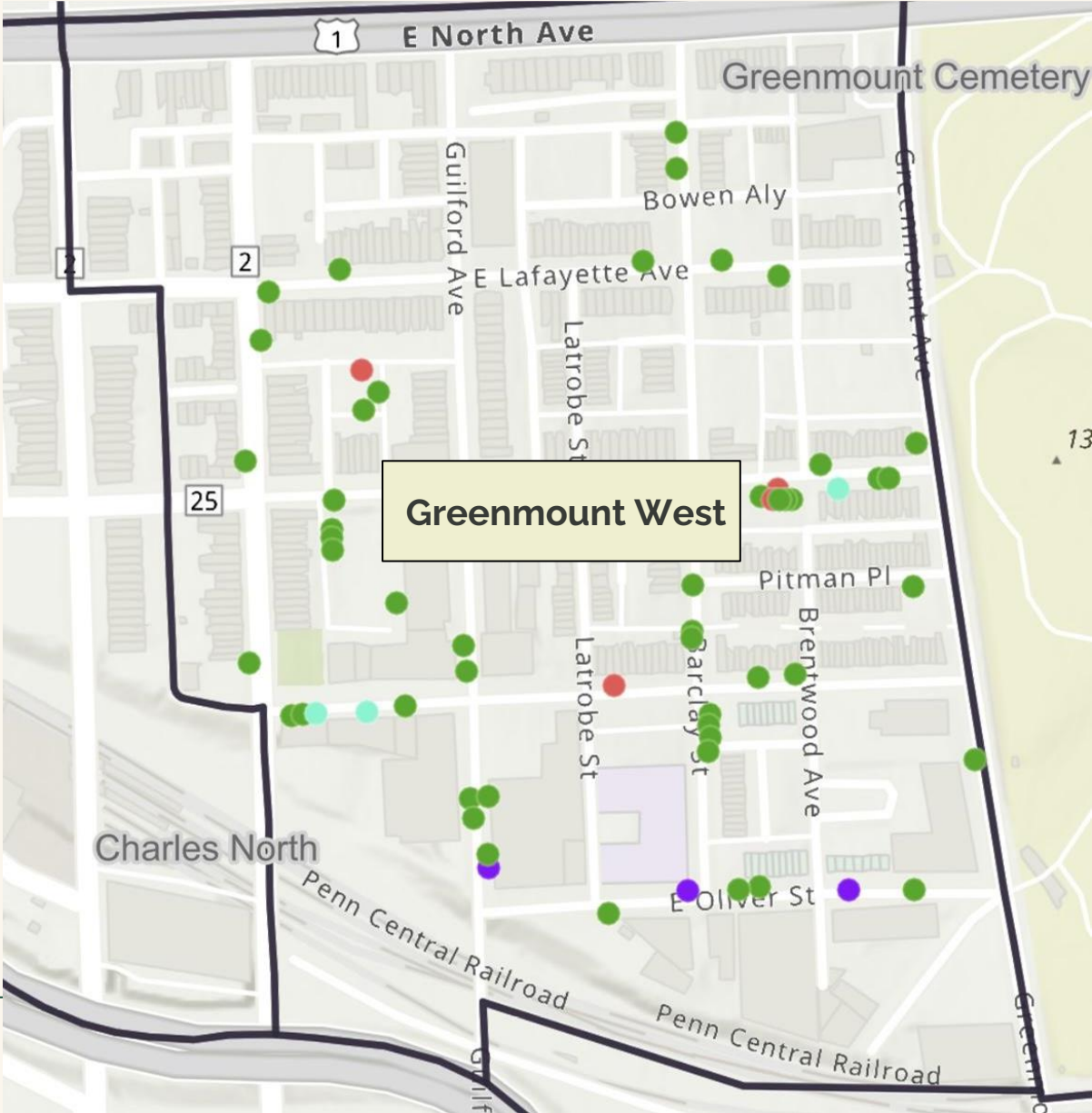


**Tree Care Map
(Before Append)**

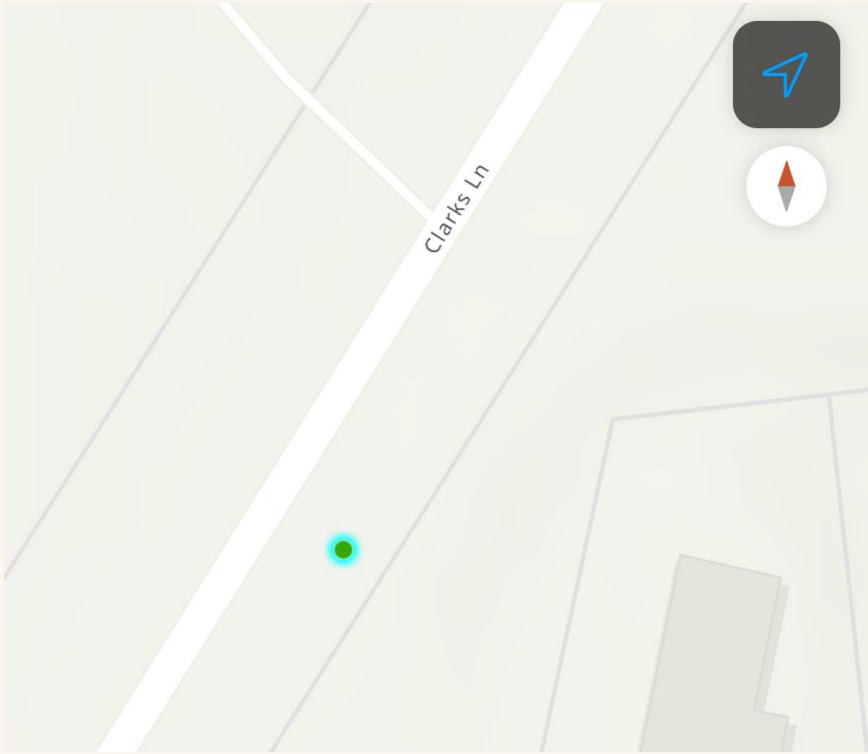


**Tree Care Map
(After Append)**

Tracking Tree Condition



What Data is Collected For Each Tree?



8:47

< Maps

Tree Care Inventory: Cross Country ✕
39.365497°N 76.696618°W 8.4 km

Edited by
elliott_BTT · Jul 1, 2024

Fields ▾

Address
3315 Clarks Ln, Baltimore 21215

Common Name
Serviceberry (Apple)

Tree Status
Planted

Date Planted
3/21/2022

Tree Condition
Good

Date Watered
6/26/2024

Date Mulched
7/1/2024


Tree Care Notes

✎ + ⋮

8:48

Cancel Collect Submit

[Inventory_Archive] Tree Ca...
39.365497°N 76.696618°W



Tree Care Crew *
Donald Jarvis ✕

Tree Condition *
Good ✕

Tree Care Task
Mulch ✕

Tree Care Task 2
Water ✕

Date Watered *
6/26/24, 10:43 AM ✕

Date Mulched *
7/1/24, 10:54 AM ✕

Tree Care In Warranty Dashboard

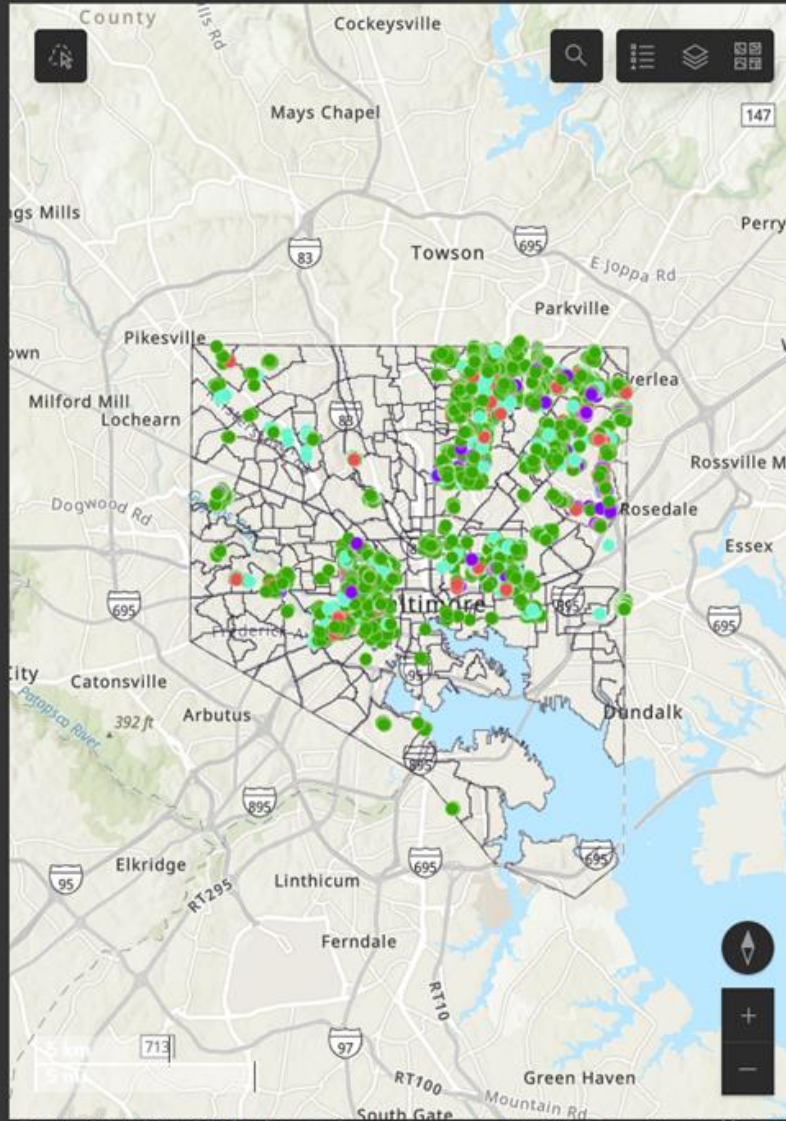
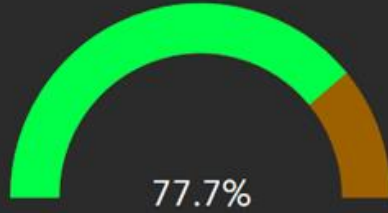
Survival/Warranty

4581
5894

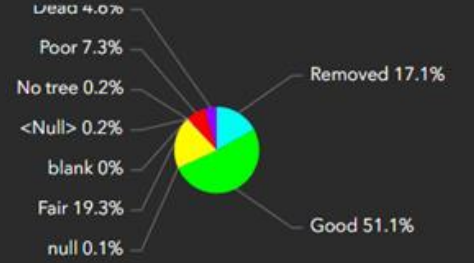
Warranty

Current

Survival Percentage



Condition Stats



Planting Season vs. Tree Condition



Number of Trees Watered Per Day



Neighborhood

- Arcadia
- Arlington
- Baltimore Highlands
- Barre Circle
- Bayview
- Belair-Edison
- Belvedere
- Berea
- Beverly Hills
- Biddle Street
- Boyd-Booth

Common Name

- Swamp White Oak
- Overcup Oak
- American Sycamore
- American Elm (Valley Forge)
- Willow Oak
- Eastern Redbud
- Southern Red Oak
- Honeylocust (Thornless)
- Sugarberry
- Black Gum
- Common Hackberry
- American Elm (Jefferson)

Count

- 616
- 423
- 374
- 356
- 275
- 262
- 262
- 258
- 181
- 180
- 154
- 131

Warranty

Current

Top Species

A-Z

Current Season

Tree Care

Planting

Watering

Mulching



Tool to estimate the long term environmental benefits that our trees will provide.

By 2054, we estimate that BTT trees planted in Spring 2022 will have:

Saved
\$11,794 in
electricity
costs



Stopped
1,908,937
gallons of
runoff
Saving
\$17,058.40 in
runoff costs



Removed
831,933
pounds
of carbon
from the
atmosphere



Created
166,950
square feet of
tree cover





Spring 2022 Season Analysis

By: Marcus Tuah

October 3, 2024

Druid Hill Park

Druid Hill is very close to our home base in Remington. We have held many volunteer events here, and it is often a site where we train our new Neighborhood Forestry Technicians.

Top Species: London Planetree,
American Sweetgum, Swamp White Oak

Survival: 18/28 (64.3%)

Thank you!

Learn more at baltimoretreetrust.org

Contact Us!

marcus@baltimoretreetrust.org
kajall@baltimoretreetrust.org



Check Out Our
Spring 2022
Season Analysis!



CEUs

For ISA CEUs, record the code to the right for each session.

Post conference, you can submit all Your CEU codes within the Conference app.

Sign-in sheets for Society of American Foresters (SAF) CFE credits are available at the registration desk post conference.

Tree Care and Technology in Baltimore City

Speakers:

Marcus Tuah & Kajall Hylton



PP-24-88
.75 A, BCMA-M, MS