

PARTNERS IN COMMUNITY FORESTRY

2024 CONFERENCE



Urban Trees and Public Health in Cleveland and the Great Lakes Region



PRESENTED BY:

Mike Piskur

Program Director, GSGP



AGENDA

**GSGP and the
Great Lakes
Region**

**Estimating
co-benefits**

Events

**Trees and
health in
Cleveland**

Next steps



GSGP Board Members



Gretchen Whitmer
Governor of Michigan
Chair



Mike DeWine
Governor of Ohio
Vice Chair



Eric Holcomb
Governor of Indiana



JB Pritzker
Governor of Illinois



Tim Walz
Governor of Minnesota



Kathy Hochul
Governor of New York



Doug Ford
Premier of Ontario



Josh Shapiro
Governor of Pennsylvania



François Legault
Premier of Québec



Tony Evers
Governor of Wisconsin

GREAT LAKES ST. LAWRENCE GOVERNORS & PREMIERS

More than 40 years of collaboration among the region's chief executives:

Illinois Indiana Michigan Minnesota New York
Ohio Ontario Pennsylvania Québec Wisconsin

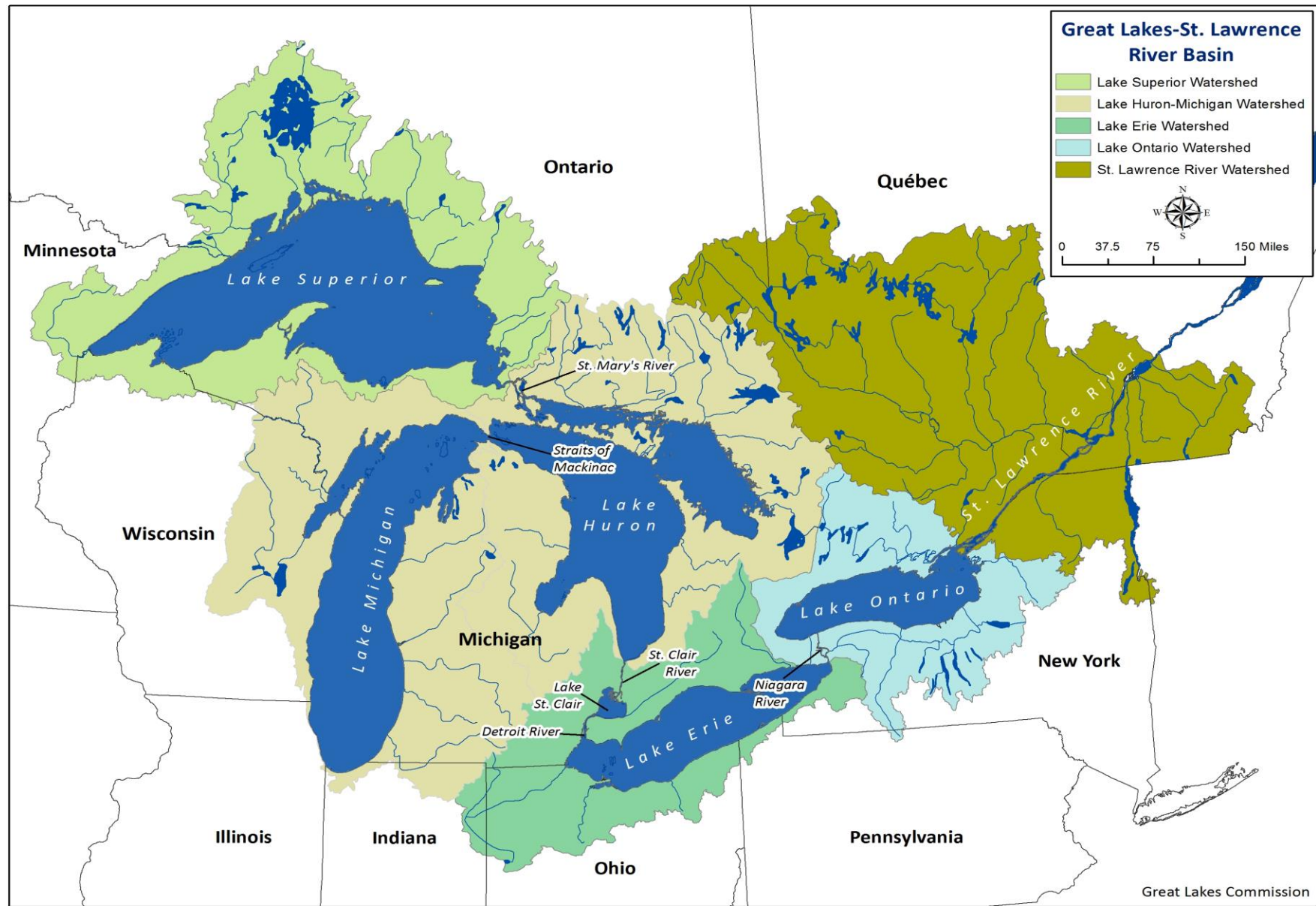
Growing the region's US\$8 trillion economy and protecting the world's greatest freshwater system.

Gretchen Whitmer, Chair, Michigan Governor
Mike DeWine, Vice Chair, Ohio Governor

Great Lakes St. Lawrence Region

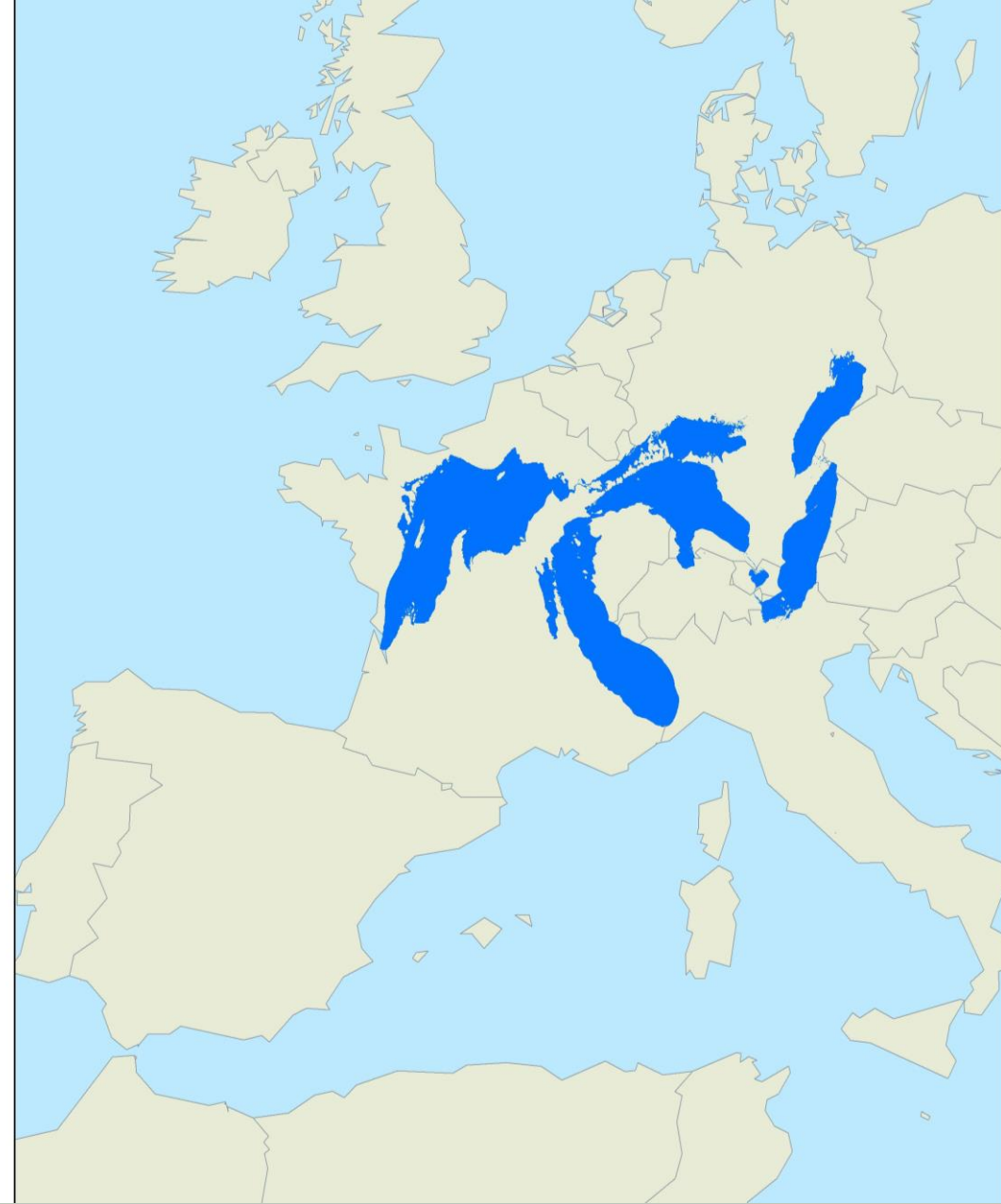
- Nearly US\$8 trillion regional economy. Equivalent to third-largest economy in the world.
- The Great Lakes and St. Lawrence River contain about 20% of the world's surface fresh water and 90% of North America's.
- Population of more than 100 million people
- Major urban centers including Chicago, Toronto, and Detroit





World's Largest Freshwater Ecosystem

- 244,160 square km of surface water
- World's largest inland waterway system, extending 3,800 km
- Eight U.S. States and two Canadian Provinces
- More than 160 U.S. and Canadian Tribes and First Nations



Great Lakes St. Lawrence Trees Initiative



A regional goal to plant 250 million trees by 2033.

- Create the infrastructure needed to support and sustain tree planting that delivers a wide range of benefits now and into the future.
- GSGP is working with the region's eight US States and two Canadian Provinces, federal governments, corporations, cities and other institutions to achieve this goal.

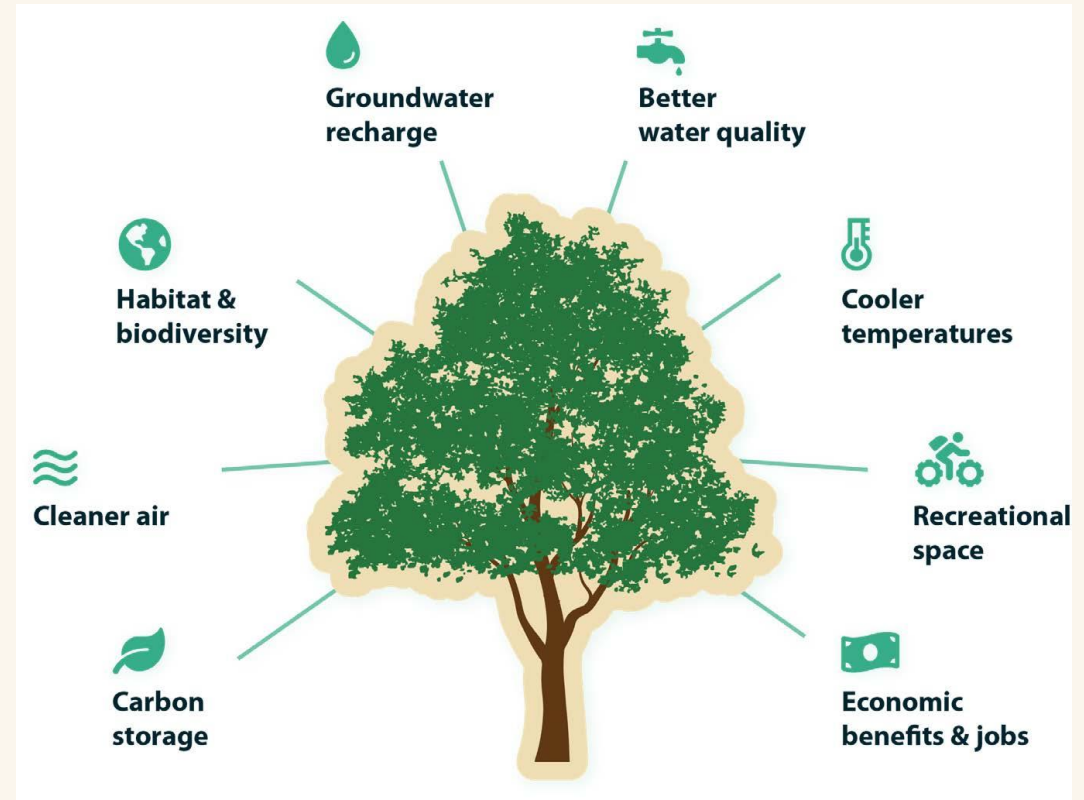


Great Lakes Trees Initiative



Co-benefits

- Ongoing project to estimate reforestation co-benefits and develop a “roadmap to monetization” of outcomes. Included a survey of potential payors.
- Partners include The Nature Conservancy and Quantified Ventures. Supported by the US Endowment for Forestry and Communities and the US Forest Service.





Trees for Public Health

Partnership with the Cleveland Clinic and the Cleveland Tree Coalition to:

- Plant trees in low-canopy neighborhoods in Cleveland
- Conduct inventory of existing research to estimate tree planting health outcomes
- Estimate health benefits of urban tree planting
- Develop informational resources for patients and local communities
- Supported by the Cleveland Foundation

Trees for Public Health

- Urban trees can be a cost-effective solution to deliver multiple positive outcomes.
- Investment in the planning and management of urban trees can pay dividends for health, the environment, and the economy.
- Reduce surface level temperatures by up to 20°F.
- Absorb ozone, NO_x, SO_x; intercept particulate matter.



Figure 6: Cleveland, Ohio - Asthma Rates

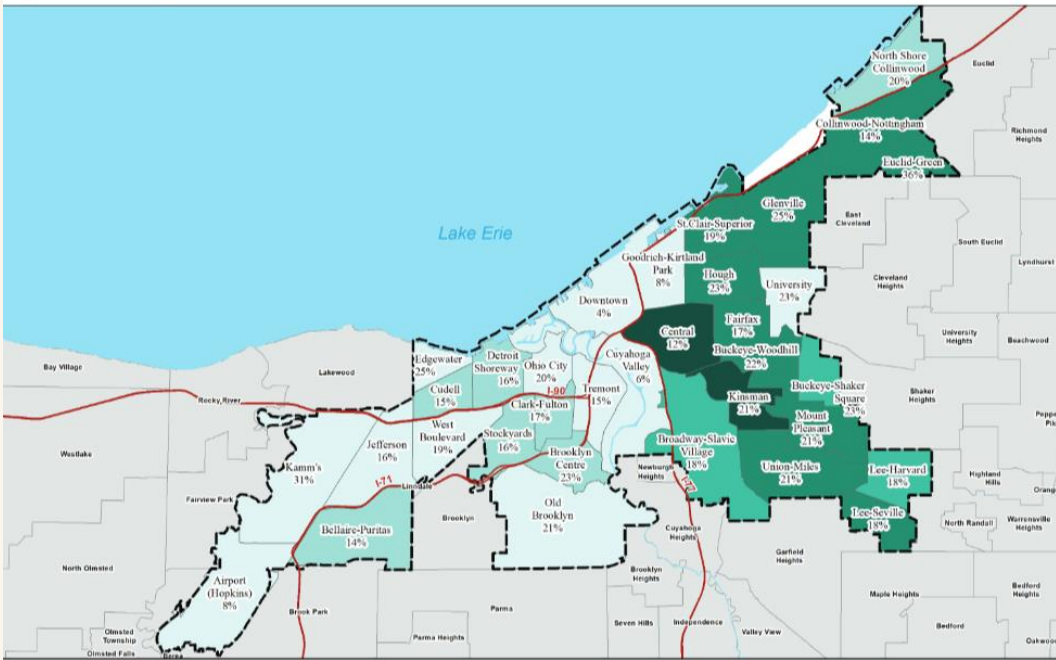


Figure 5: Cleveland, Ohio - Cardiovascular Heart Disease Rates

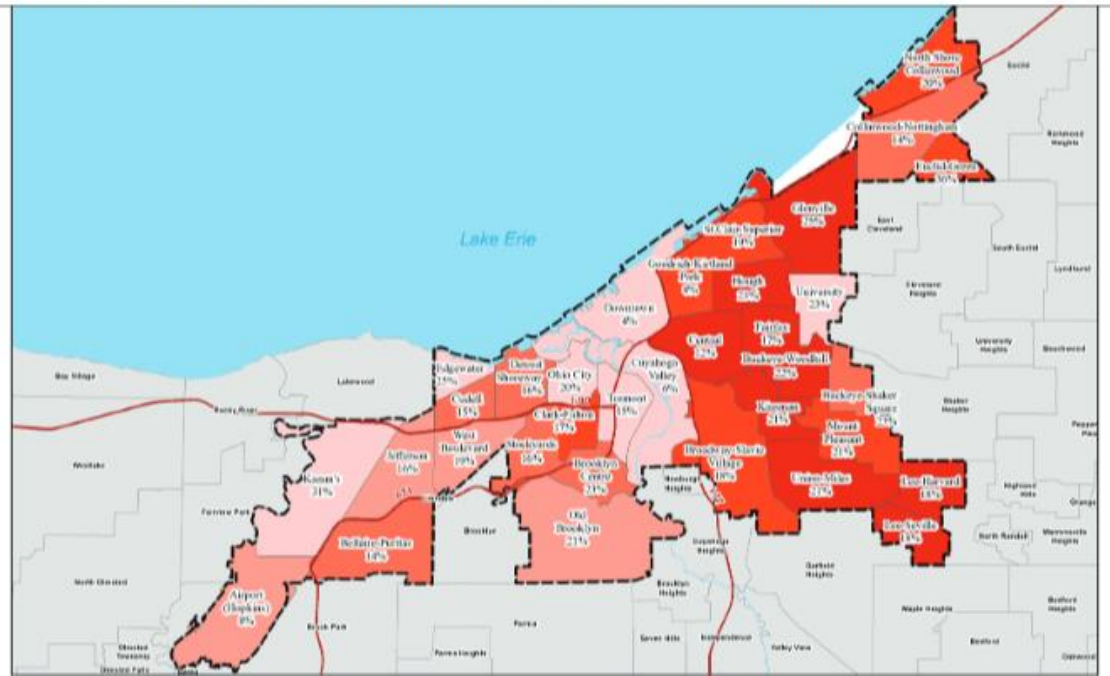


Figure 2: Cleveland, Ohio - Annual Air Quality Benefits

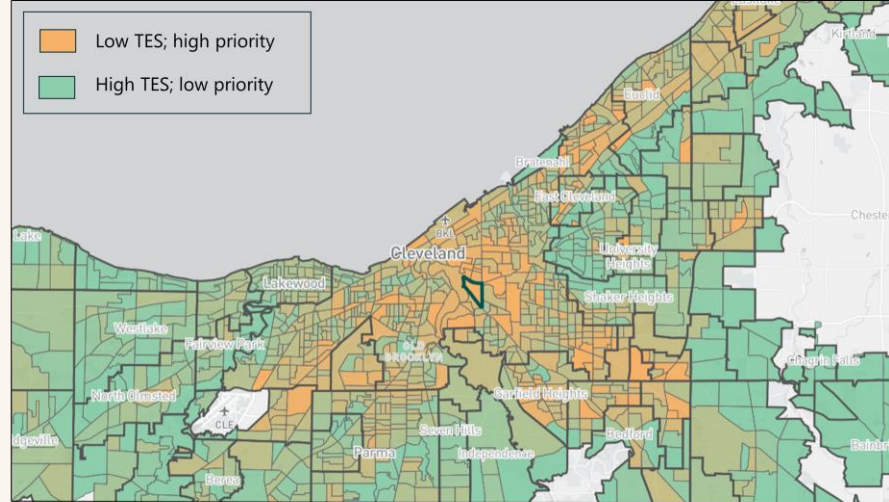
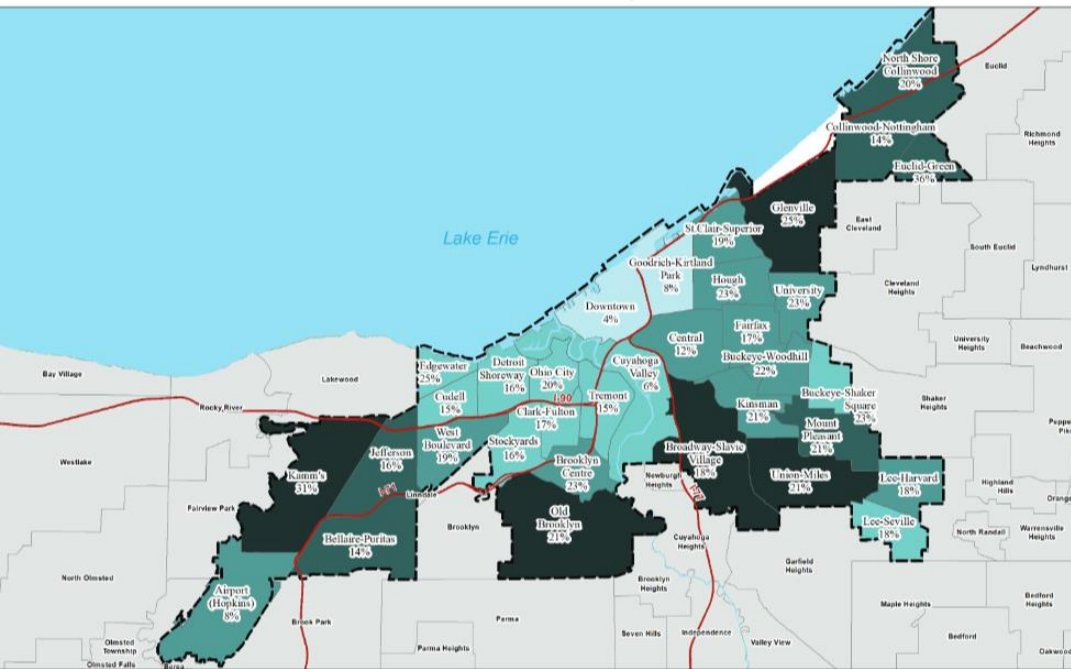


Image Courtesy of American Forests Tree Equity Score (www.treeequityscore.org)



St. Clair Superior neighborhood of Cleveland – October 2024

Spend 20-30 minutes a day near trees. Why?

- Improves mental health
- Better heart health
- Boosts brain development
- Helps you breathe better
- Reduces effects of heat & sun
- Delivers a healthier baby
- Heal faster from surgery



Trees for Public Health

Next steps:

- Translate infographic into other languages
- Develop resources for doctors, medical students, and other health professionals
- Expand partnerships to other Great Lakes cities
- Information for specific demographic groups (e.g., children, expectant mothers)
- Engage with other health care partners
- Work to establish trees as critical infrastructure!





Thank you.

Mike Piskur

mpiskur@gsgp.org

Cailyn Andrews

candrews@gsgp.org

greatlakestrees.org



CEUs

For ISA CEUs, record the code to the right for each session.

Post conference, you can submit all Your CEU codes within the Conference app.

Sign-in sheets for Society of American Foresters (SAF) CFE credits are available at the registration desk post conference.

Urban Trees and Public Health in Cleveland and the Great Lakes Region

Speaker:

Mike Piskur



PP-24-888
.75 A, BCMA-M, MS