

PARTNERS IN COMMUNITY FORESTRY

2024 CONFERENCE



Environmental justice lessons from cities and non-profit organizations



PRESENTED BY:

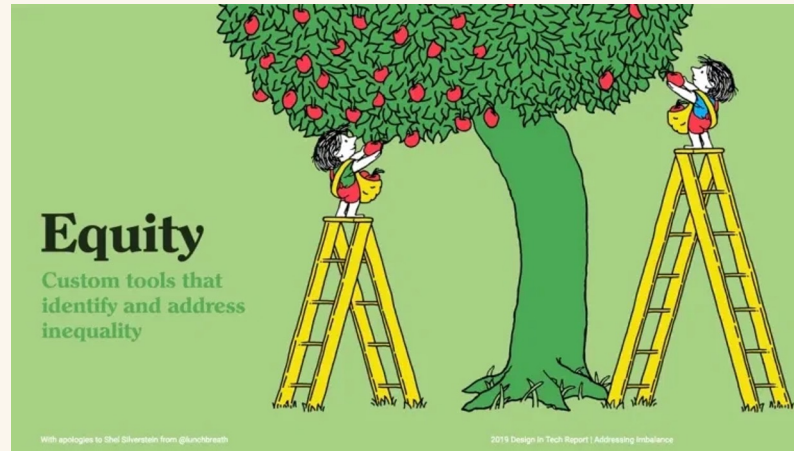
Christine Carmichael, PhD

Founder and Principal, Fair Forests Consulting

Christine@fairforests.com

Fair Forests Consulting

ABOUT US



- Add an equity lens to Urban Forest Management Plans
- Develop inclusive community engagement methods
- Host virtual or in-person trainings on environmental justice
- Evaluate the success of community engagement efforts

AGENDA

**The three dimensions of
environmental justice**

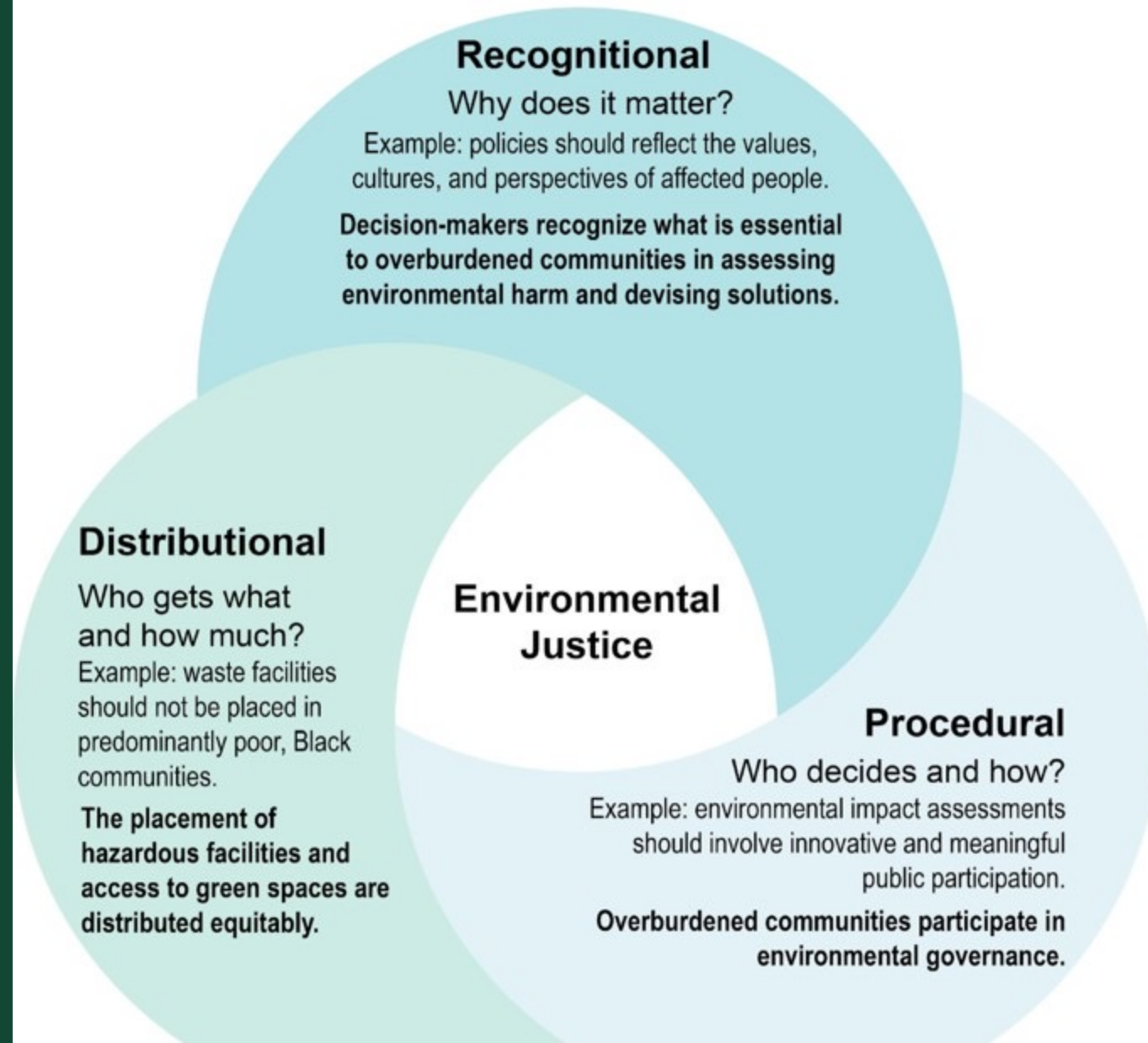
**Facilitating resident involvement
in decision-making about trees**

**Providing resources needed for
tree planting and care**

**Securing equitable investments
in urban forestry**

Holistic environmental justice

Procedural and recognitional justice rely on meaningful involvement of historically underserved communities



An intersectional approach

“...what if we were to focus not only on access [to greenspace], but also **meaning, belonging, and connection** to the urban forest?”

How might we strengthen the social meaning of the urban forest in whatever stage or state it is in?

What sorts of programs might we produce?”

(Campbell et al, 2022).



Cultivating a Culture of Belonging

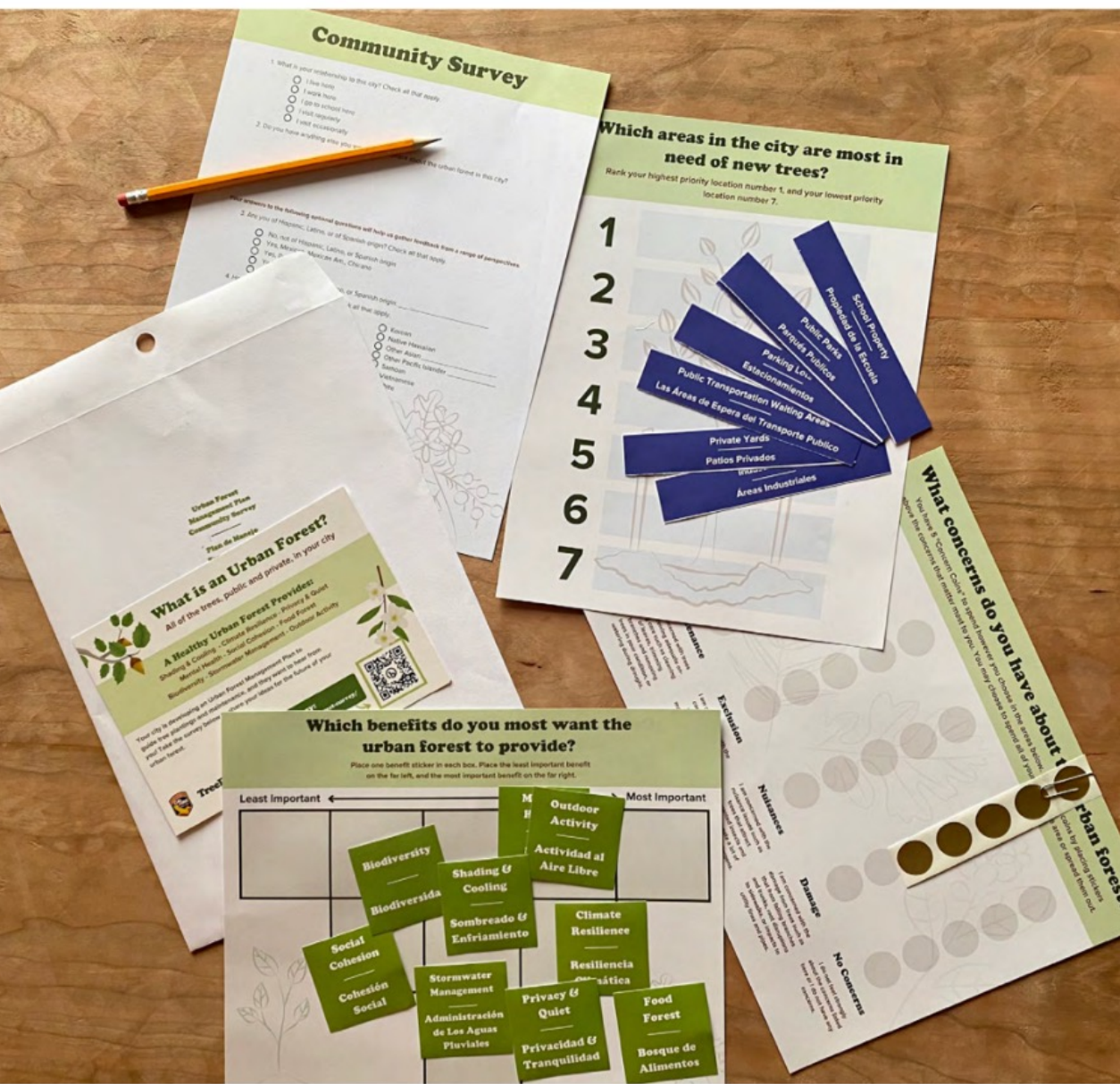
“A culture of belonging requires intentional actions to ensure that there are shared values, standards of behavior, and practices that support wellbeing.”

A way to tackle this is to **create or re-evaluate the core values, mission, and vision.**

Doing so can help determine what is important and meaningful to the organization and the work it does, and how you want to be experienced by the people you serve.”

Source: [Center for the Study of Social Policy](#)





Identify resident priorities to guide decisions

Example: San Fernando, California

Workshops included an educational presentation on nine benefits of the urban forest.

The surveys included three one-page activities that asked:

1. **which benefits** of the urban forest are most important to community members,
2. **where** it is the highest priority to plant new trees, and
3. what are the **top concerns** about the urban forest.

activity packets



Source: [Groundwork USA](#)

Help residents select trees to plant

Example: Ann Arbor, Michigan

- Property owners can pre-select their trees from a list of available species and are provided information on these species, their care, and the ideal locations in which to plant them.
- Example tree information cards: <http://a2gov.org/10ktrees>

10,000 TREES INITIATIVE TREE INFO CARD

Eastern White Oak (*Quercus alba*)

Get to know your tree:

The eastern white oak is a Michigan native species with medium-sized, pinnately lobed leaves with rounded lobes and deep sinuses. Leaves lack bristle tips. Fall leaf color is typically a drab maroon, reddish-orange, or reddish-brown. Flowers are catkins hanging below developing leaves in long strands. Fruits are relatively small acorns with short stalks and shallow caps. Bark is a pale ashy grey with long, peeling strips on younger trees. Older individuals have bark that is a darker grey, with either long, peeling ridges or small blocks.

Tree benefits:



Each year, a 1-inch diameter eastern white oak provides approximately \$29.00 in benefits and reduces atmospheric CO₂ levels by 20 pounds. To learn more about the benefits provided by your tree, or to see the benefits provided by larger white oaks, please visit www.treebenefits.com.




www.a2gov.org/10ktrees

Tools to help residents select trees


Sweetbay Magnolia
Magnolia virginiana
 A small evergreen tree. Fragrant blossoms.


Fragrant white flowers



The leaves are dark green



Red fruit in fall (No mess!)



Sun: Full sun to partial shade
Height: Small, 10-20 feet
Width: Small, 10-20 feet
Tree Care: Water while leaves are present

Maintenance Level:
 Medium

TreePhilly

(Acer grandidentatum) **Bigtooth Maple**

Height: 25'
Spread: 15'
Growth Rate: Slow

This maple is native to Utah canyons. It is well adapted to our climate. The leaves turn a bright red in the fall, much more colorful than some of the other maple species.

Advantages: A good street tree. Drought tolerant and withstands cold.

Disadvantages: Does not tolerate extremely wet soils.

1980 North 1366 West




Provo, Utah

S

SCHOOLYARD TREE? Yes

IS CA NATIVE? Yes

HAS FALL COLOR? Yes

UTILITY FRIENDLY? Yes

LEAF FORM
 Select... ▾

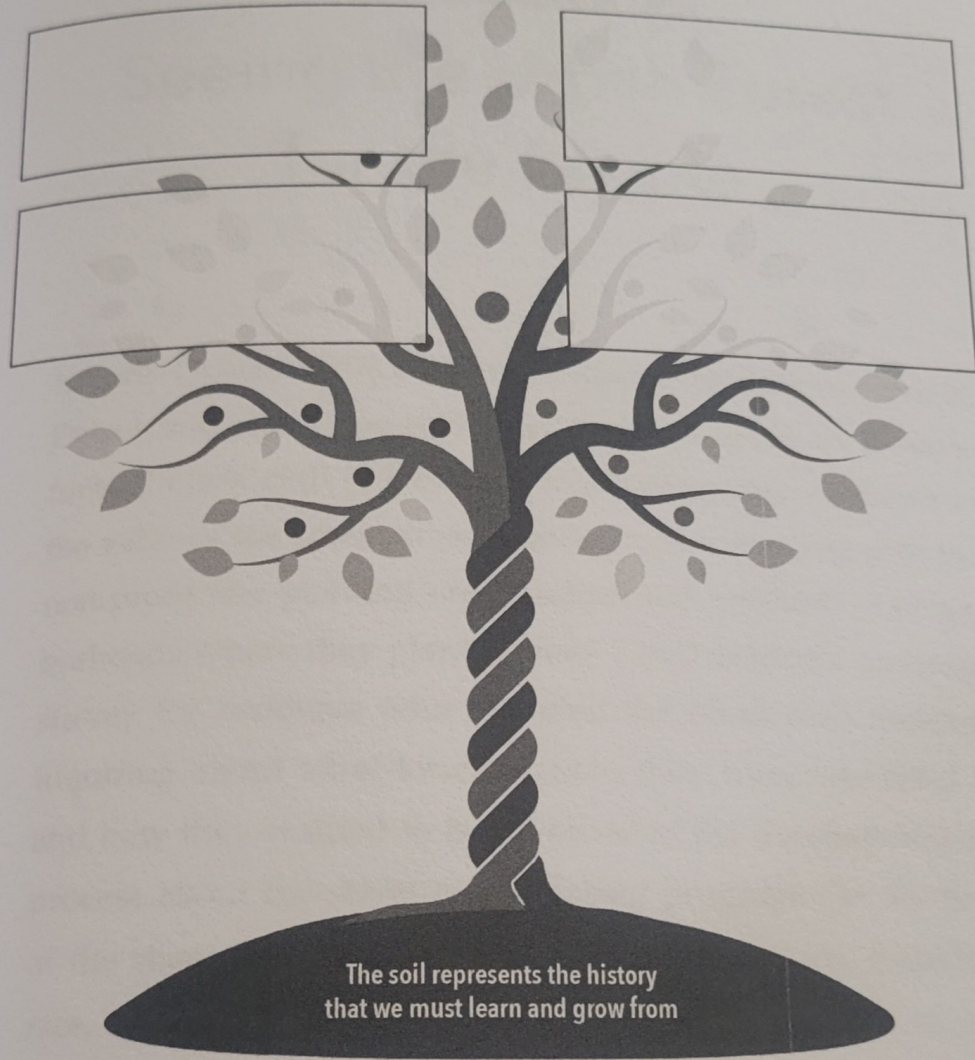
LEAF ARRANGEMENT
 Select... ▾

<https://selecttree.calpoly.edu/>

My Dream Tree

CHAPTER 1

STEP 1 • My limitless dreams for urban forests and people



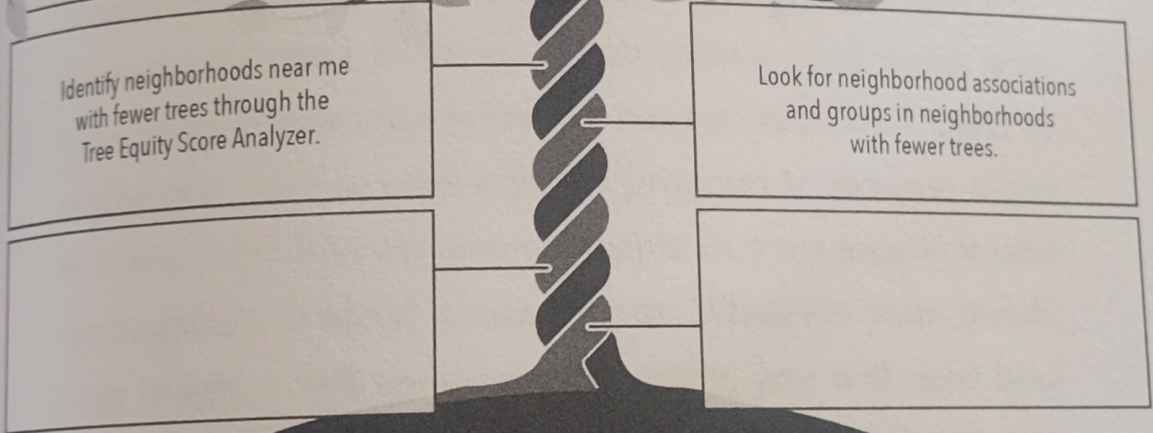
My Dream Tree

CHAPTER 3

STEP 1 • My limitless dreams for urban forests and people



STEP 2 • Strategies for growing my dreams using the nutrients from the soil



Identify neighborhoods near me with fewer trees through the Tree Equity Score Analyzer.

Look for neighborhood associations and groups in neighborhoods with fewer trees.

Provide support for tree planting and care

In Bridgeport, Nebraska, residents receive stakes, rope, mulch, and physical assistance planting and caring for trees.





Developing equitable investments in urban forestry



NEIGHBORHOOD BLOCK PARTY

Join us!

**Saturday, April 27th
12-2 p.m.**

Victory Forest Community Center
3427 Hemphill St.,
Fort Worth 76110

**FREE
FOOD
FUN &
MUSIC**

Come tell us why you love
living in your neighborhood,
and what we can do to make
it even better!

Align with larger city programs to access funds

Example: Fort Worth, Texas

The city's "Neighborhood Improvement Program" chooses priority neighborhoods for clean-up, restoration of some homes, street lights, etc...

- Forestry staff goes house to house to see where pruning is needed
- Also provide trees and planting service, plus 2 years of watering and maintenance through a contractor
- Get the word out through "Next Door," mass mailers, and social media postings

2022 - 2026 Strategic Goals

The strategic goals guiding the development of the fiscal year 2023-2024 budget are:



I. FOCUS ON COMMUNITY FIRST



II. CULTIVATING A STRONGER LOCAL ECONOMY



III. PRESERVE BEAUTIFUL HOMES AND NEIGHBORHOODS



IV. STRENGTHEN CLIMATE RESILIENCE AND ENVIRONMENTAL JUSTICE

Build from your city's strategic goals to secure financial support for trees

Example: San Fernando, California

PROVIDE GREEN AREAS FOR OUTDOOR RECREATION IN PARKS AND AROUND SCHOOLS

Target: 40% Tree canopy in parks and 30% around schools

Lead Agency: Public works, Los Angeles Unified School District

Promote cool routes to school

Plant trees at a frequency of one tree for every 30 ft along school property and along streets within 0.15 miles of schools.

Create curb bump-outs at intersections within 0.15 miles from schools to create room for trees and calm traffic, increasing road safety for children.

Prioritize greening in and around school with low existing tree canopy and in neighborhoods with low existing canopy:

1. Cesar Chavez Learning Academy

2. Vista del Valle Dual Language

See Tree Planting Priority Map

Stormwater management

Equitable ordinances

- Programs that utilize stormwater fees (which may be based on percentage or amount of impervious surface area) can encourage nature-based and green infrastructure.
- Revenue generated through fees can be utilized to fund capital improvements (including green infrastructure) in frontline communities.
- Can exempt community-owned or run properties, if overly burdensome.



Thank you.



Christine Carmichael, Ph.D.

Christine@fairforests.com