

PARTNERS IN COMMUNITY FORESTRY

2024 CONFERENCE



Cultivating Community: The Growth of D.C.'s Food Forests



PRESENTED BY:

Alexander Grieve

Urban Forester

Washington, D.C. District Department of Transportation

Urban Forestry Division



AGENDA

Overview

Why food
forests

Getting
Started

What and
where

Partners

Lessons
learned

Land acknowledgement

Chicago and DC



About our Program



- Our structure
 - Operations
 - Non-operations
- How does the food forest fit in within our program
 - Partners
 - Outreach
 - Increasing canopy



What is a food forest?



What are the goals of food forests

- Innovation
- Community involvement
- Education
- Partnerships
- Food security
- Biodiversity



History of food forests in DC

- Experimental orchard
- Why did we start?
- How has the program grown thus far?



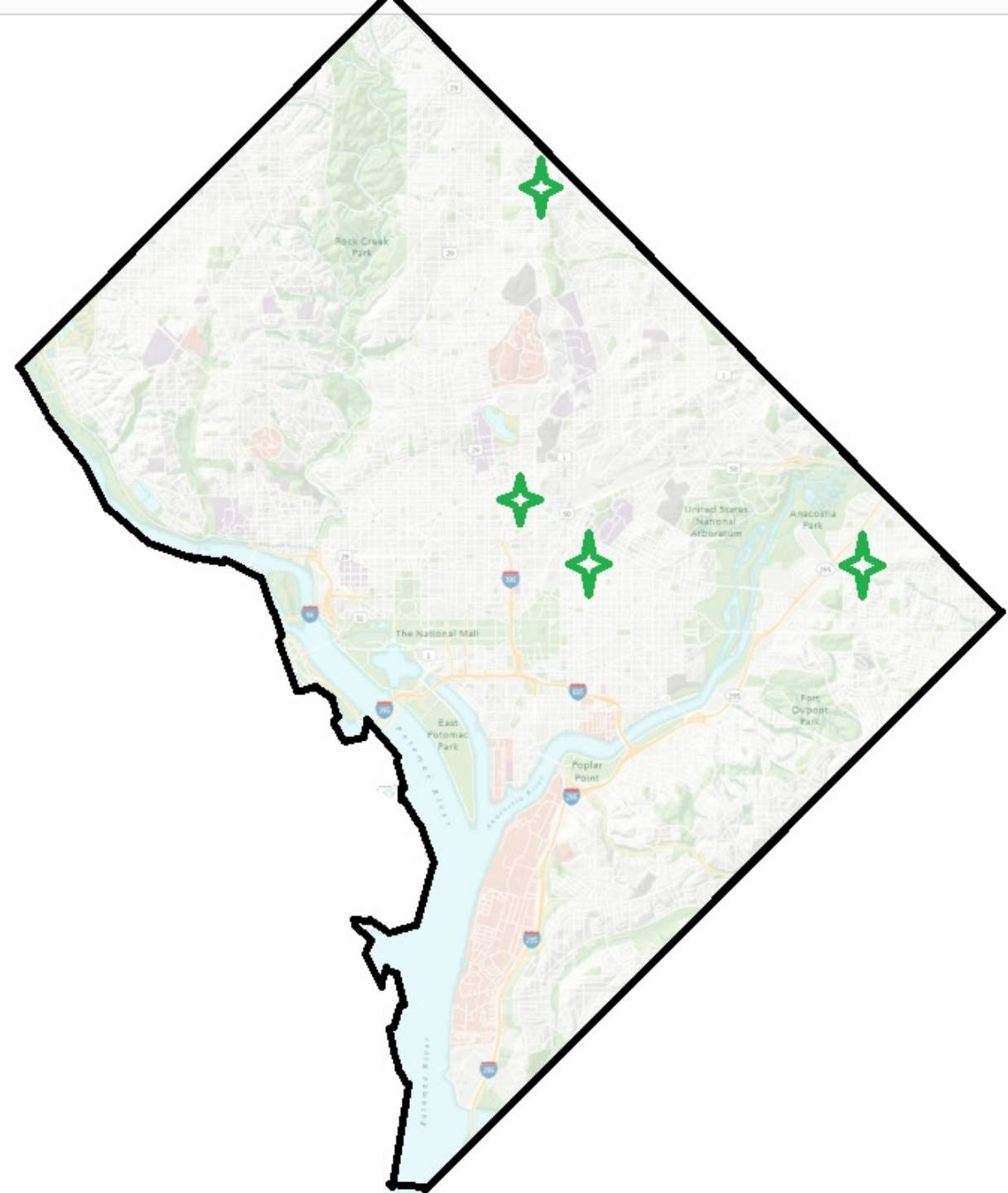
Funding

- Where was our funding source?
 - Forest Service, Chesapeake Bay Program
- Who obtained the funding?
- Where did the funding go?



Where are our current food forests?

- Langley Elementary
- Capital City Public Charter School
- Lederer Environmental Educational Center (DPR)
- Capitol Hill Montessori School



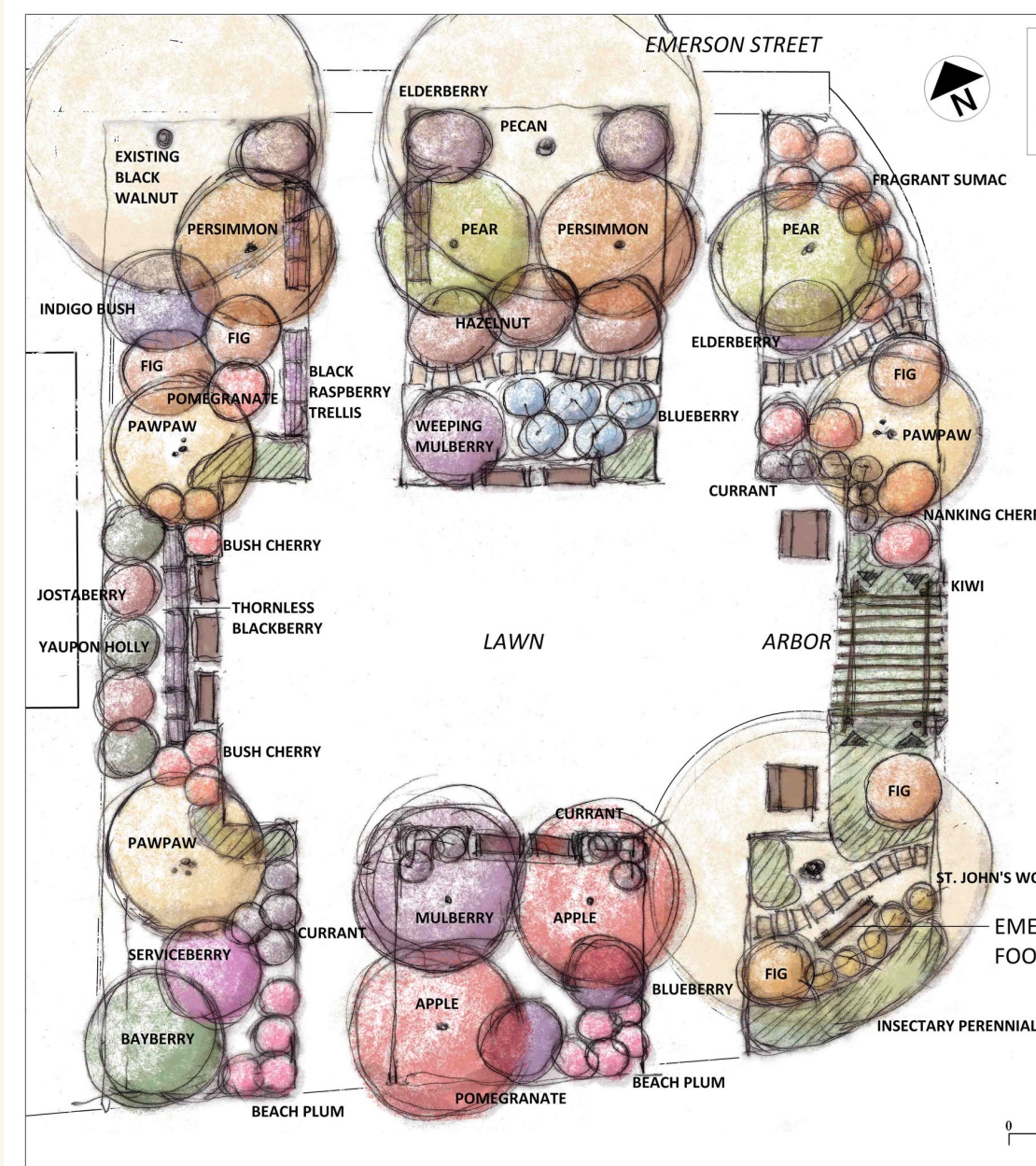
Getting started: the process and establishment

- Why were the food forests locations chosen?
- What was the school input?
- What was the community input?



What does our food forests look like? Composition

- What species grow?
- How big are they?
- What are the surroundings?
- Are they integrated with the community?
- Interpretation?
- Building material from repurposed wood



Langley Elementary

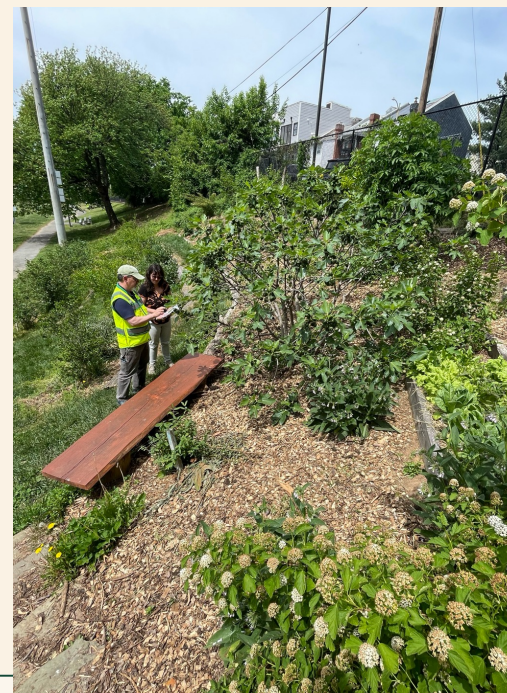
- Community involvement
- Rec-center
- Proximity to school



Langley Elementary



- Interpretation
- Waste-wood re-use
- Outreach



Capitol City Public Charter School

- Curriculum integration
- School gardener



Capitol City Public Charter School

- Internal and external access
- Farmer's market



Lederer Environmental Education Center

- Apiculture
- Urban wood re-use
- Riparian zone part of design with access to stream



Lederer Environmental Education Center

- Access to bike trail
- Proximity to senior living
- Proximity to existing community garden



Capitol Montessori

- High level of community involvement
- Innovation



Lessons learned thus far

- Maintenance
- Establishment
- Continuity
- Design must be adaptable
- Visibility/Access



How do we build community and trust?

- Education
- Participation
- Access
- Partners and connection!
 - Schools
 - Community groups
 - Contractor
 - Festivals
 - Federal Government
 - Other DC Gov Departments



For more information

- [Forested LLC](#)
- [Trees.dc.gov](#)





Thank you!

Alexander Grieve

Alexander.grieve@dc.gov

