

PARTNERS IN COMMUNITY FORESTRY

2024 CONFERENCE



Leveraging i-Tree's Legacy

PRESENTED BY:



Alexis Ellis

USDA Forest Service, Forest Inventory & Analysis
i-Tree Team Production Lead



Robert Seemann

USDA Forest Service, Cooperative Forestry
Urban & Community Forestry National Program



i-Tree changed the conversation



PARTNERS IN COMMUNITY FORESTRY 2024 CONFERENCE

i-Tree set the table.....

IRA-UCF Historic investment

- \$1B Public Notice of Funding Opportunity (NOFO)
- Overwhelming response to NOFO.....
- **\$6.4B requested** by over 842 applications
- 385 projects selected.



**INVESTING IN
AMERICA**



PARTNERS IN COMMUNITY FORESTRY 2024 CONFERENCE

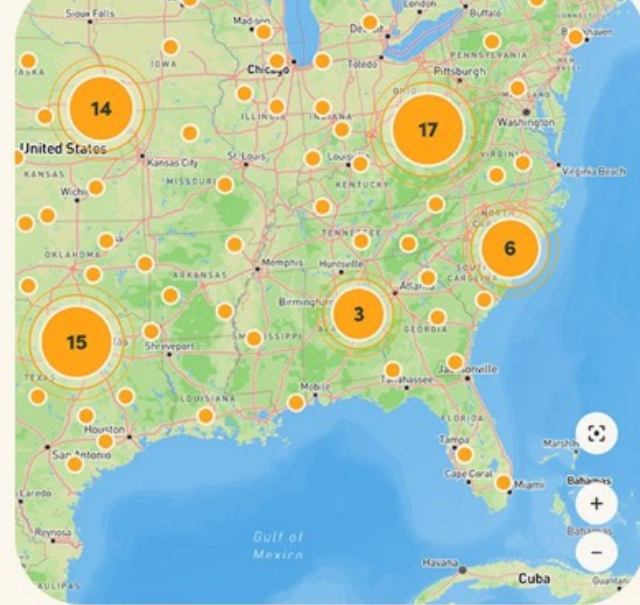
i-Tree set the table.....

New partners articulate why “trees are good”

- Many of applicants were outside or our traditional UCF outreach/assistance networks.
- Majority of applicants requested UCF resources specifically to improve the conditions in their communities.

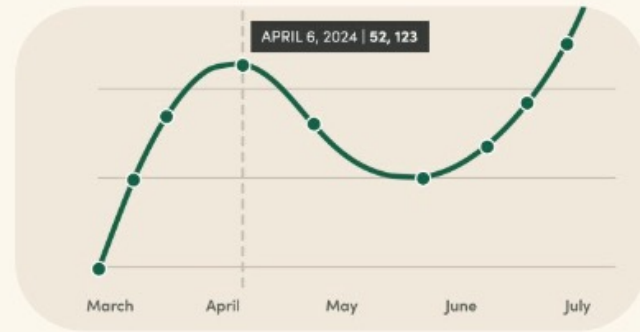
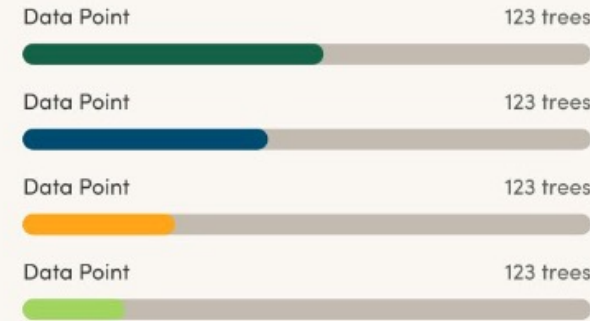


i-Tree has a significant role in reporting UCF-IRA accomplishments



IMPACT

10K
Trees Planted



2K +
Trees planting events

English-US **Activity Information**

Please identify the Reporting Timeline that you are submitting this form for, and select the Activity Type. After you select the Activity Type, you will be prompted to identify the location(s) where this work occurred and to provide additional details regarding the completed work.

Reporting Period

This report should only pertain to activities that occurred within one of these reporting periods.

Jan 1, 2024 - June 30, 2024
 July 1, 2024 - Dec 31, 2024

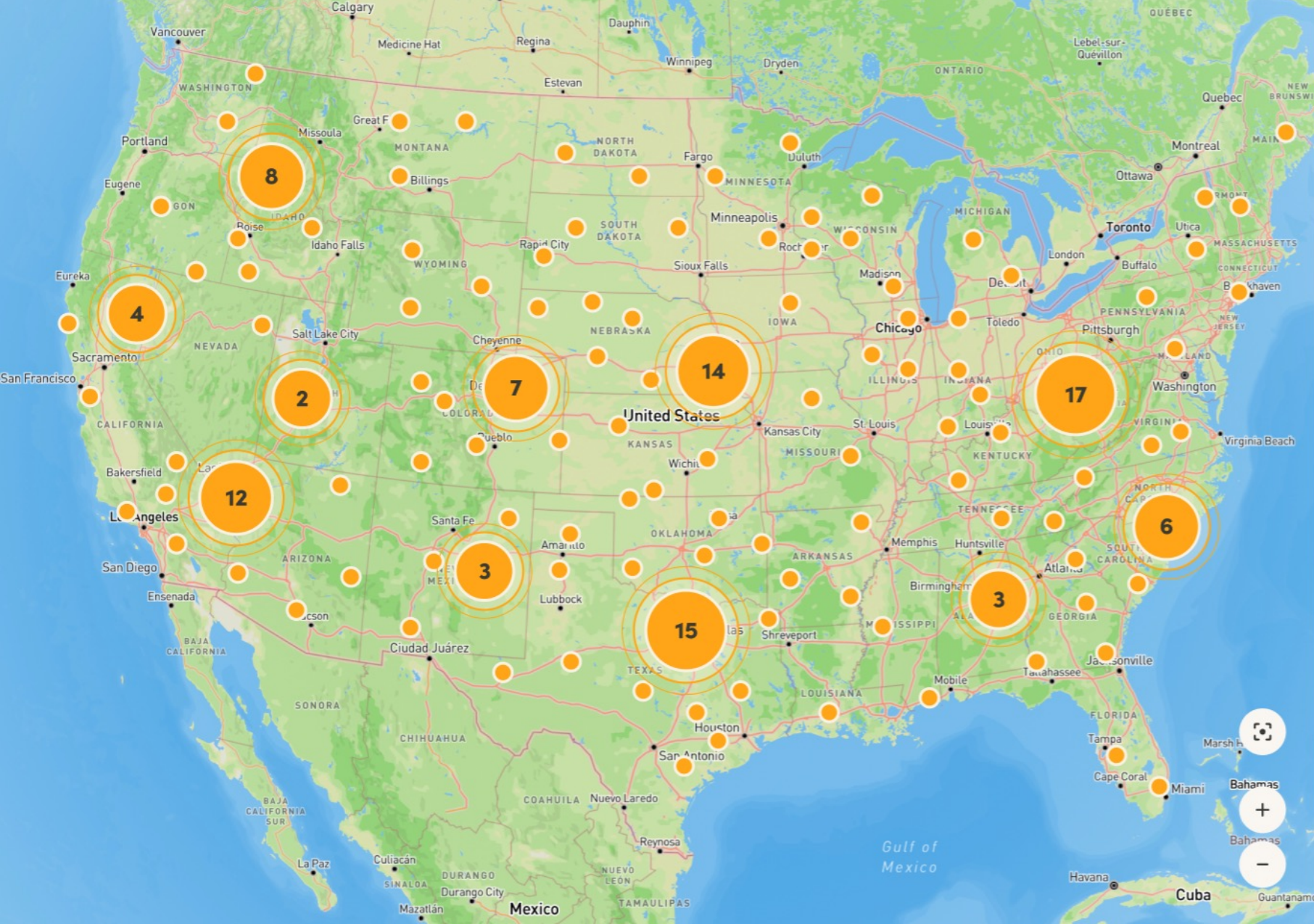
Activity Type*

Planting
 Pruning
 Removal

Treatment
 Distribution /Giveaway
 Inventory

Canopy Assessment
 Planning and Policies
 Career Pathway Training

Earned Credentials



198,554

TREES PLANTED AND DISTRIBUTED

Forests & Communities

82

TOTAL PROJECTS

Carbon 113,020 METRIC TONS CO2 SEQUESTERED

Explore Carbon Sequestration from Forests on the Map >

Water 65,236,802 GALLONS AVOIDED WATER RUNOFF

Explore Water Risk on the Map >

Air 489 TONS AIR POLLUTANTS REMOVED

Explore Air Quality on the Map >

Estimated benefits over 40 years. This data was generated using the iTree. Learn more about how this data was generated.

500K +
Trees planting events

500M
Community Participants

EQUIVALENCY METRICS

\$36.67
energy savings / year

2
cars off the road for 1 year

7
bottles of water saved

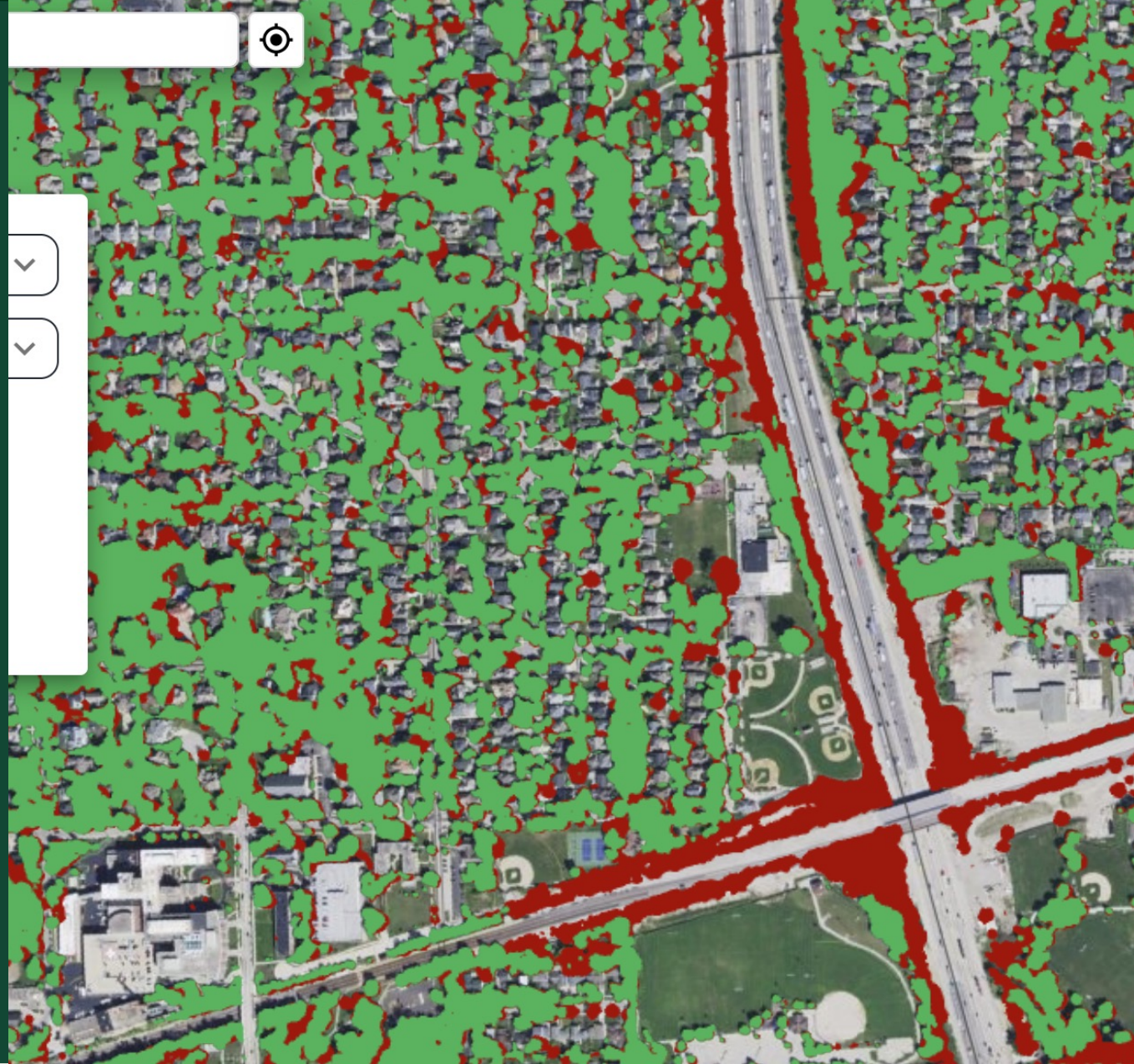
5
people's daily oxygen

Estimated benefits after 40 years. This data was generated using iTree.



PARTNERS IN COMMUNITY FORESTRY 2024 CONFERENCE

UCF-IRA is developing resources that can be plugged back into i-Tree Tools





Search for a place

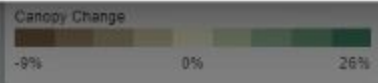
NATIONAL URBAN TREE CANOPY TOOL



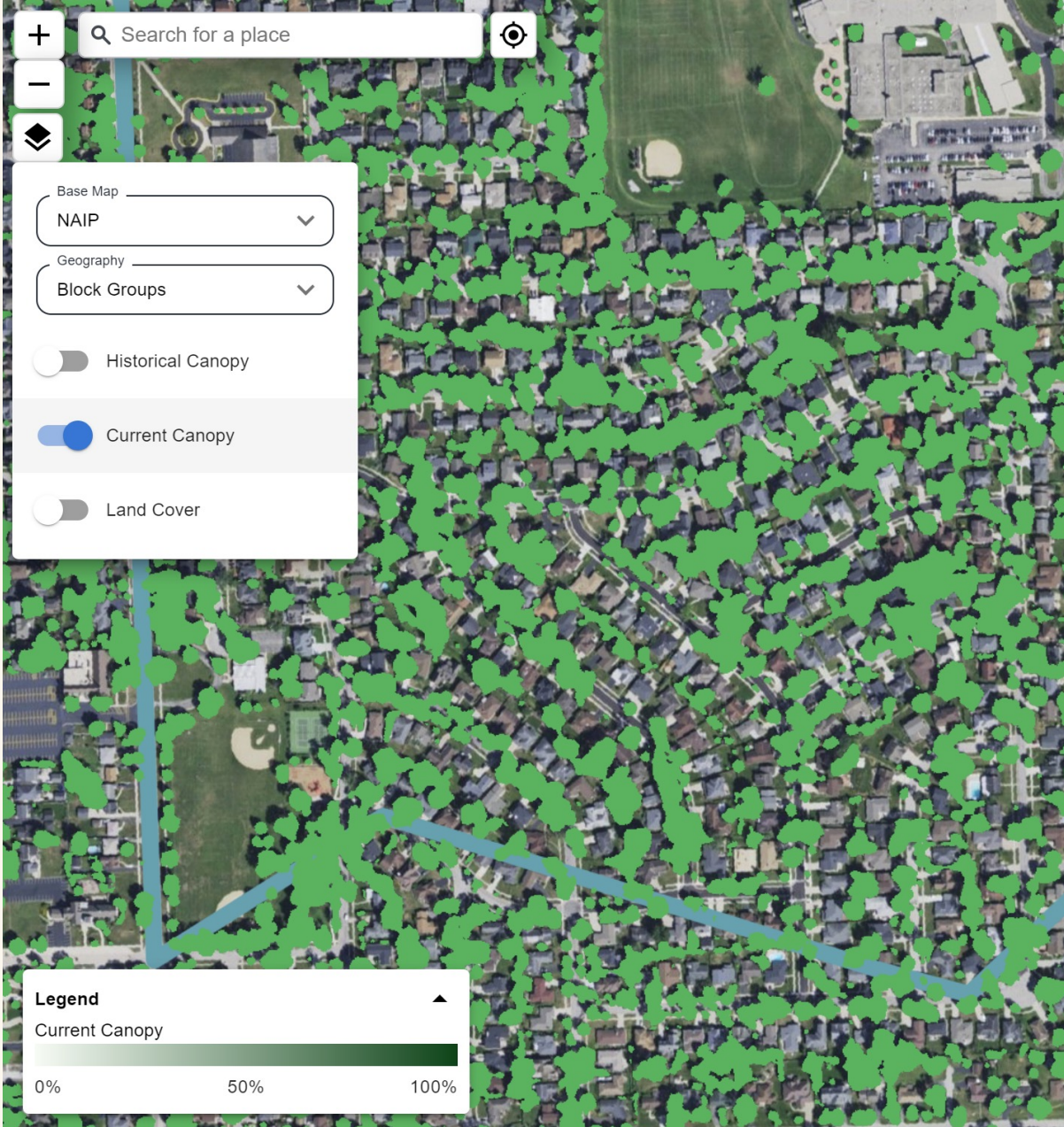
Dive into the data of every urban tree canopy across the country! This monitoring tool helps communities visualize urban forest changes, prioritize planting areas, and track project impacts.

[GET STARTED](#) [HOW TO](#)

Don't show me this again.



PARTNERS IN COMMUNITY FORESTRY 2024 CONFERENCE



Census Block Group ID:
170318198021

State
IL

Total Assessed Area
235 Acres


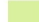




Urban Tree Canopy
26.84%

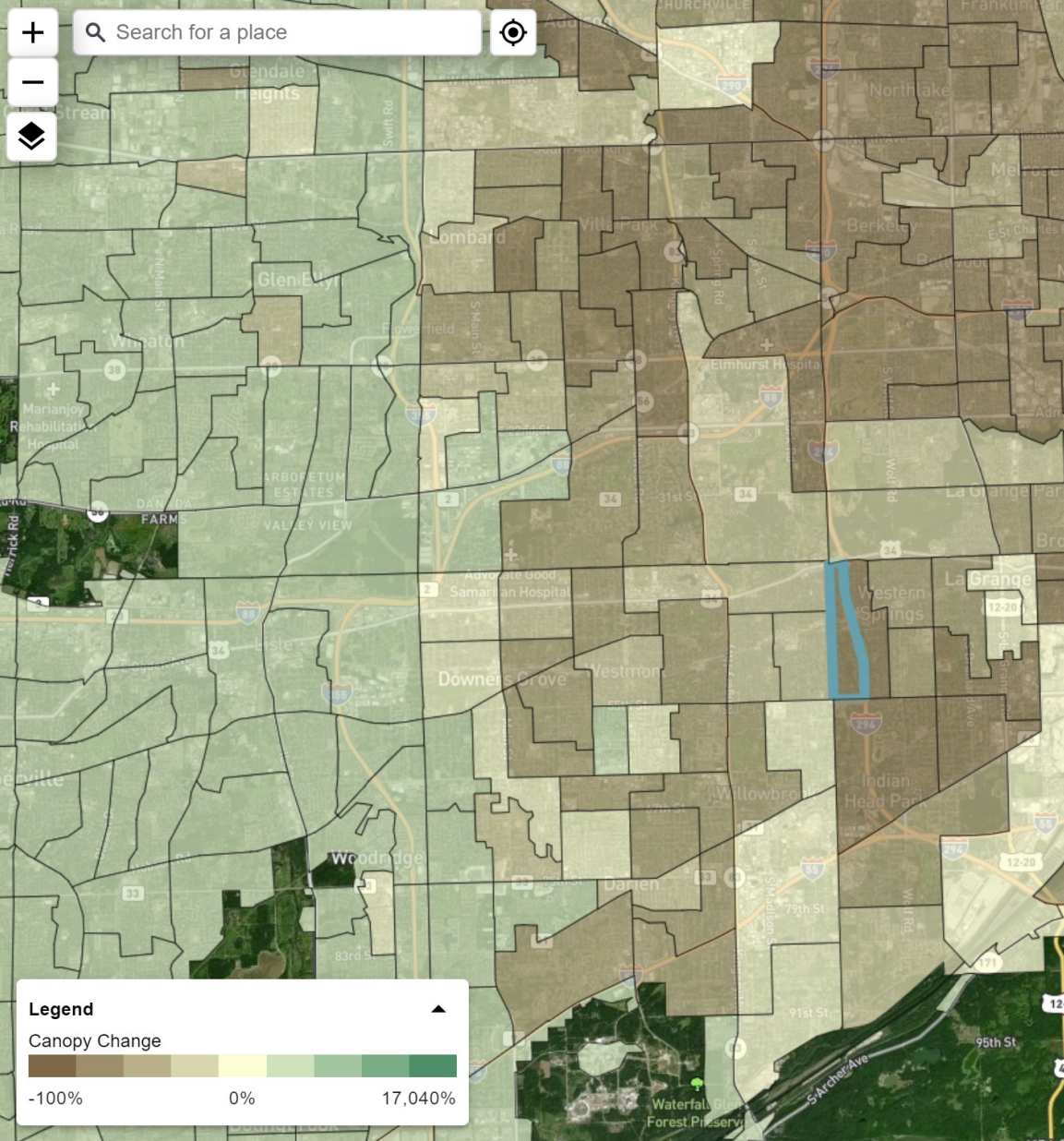
UTC Change
-8.36% (2017 to 2023)

UCF-IRA Disadvantaged Community
No

Land Cover Classification

CHART TABLE

	Tree Canopy	26.84%
	Shrub	0.04%
	Water	0%
	Herbaceous	29.98%
	Bare Soil	0.56%
	Impervious	48.11%



Census Tract ID: 17031820000

State
IL

Total Assessed Area
426 Acres







Urban Tree Canopy
44.48%

UTC Change
-12.72% (2017 to 2023)

UCF-IRA Disadvantaged Community
No

Land Cover Classification

CHART **TABLE**

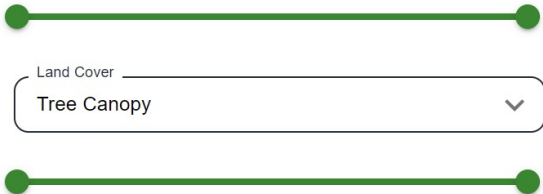
	Tree Canopy	44.25%
	Shrub	0.05%
	Water	0.52%
	Herbaceous	24.22%
	Bare Soil	1.06%
	Impervious	36.72%

VIEW PLAN ⋮




Display by
Canopy Change

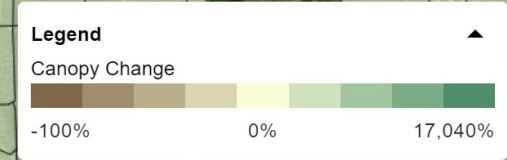
UCF-IRA Disadvantaged Communities
 Display Only Disadvantaged Communities

Tree Canopy
Historical Canopy



Land Cover
Tree Canopy

-  About
-  Help
-  Settings



What is i-Tree?

Delivering current, peer-reviewed tree benefits estimation science from the USDA Forest Service, Partners, and Cooperators to all types of users with free tools and support.



What is the i-Tree Partnership?



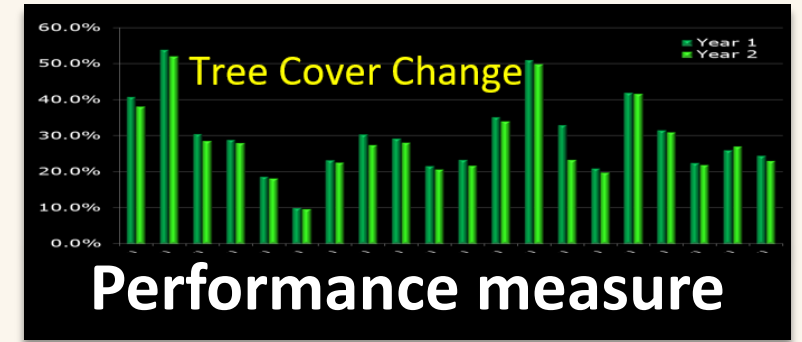
The i-Tree Cooperative: A Story of Collaboration



Tree benefit-based approach

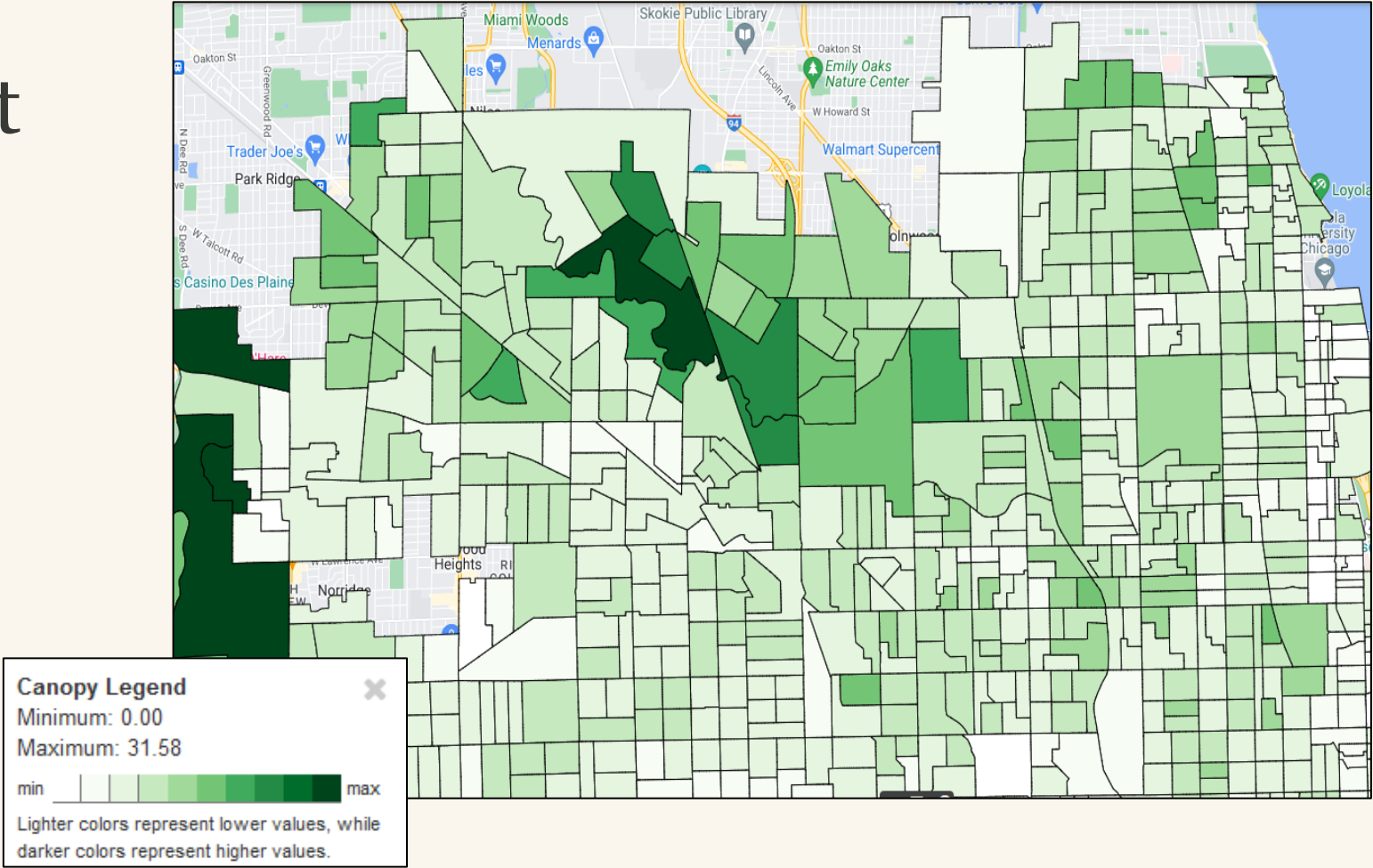


i-Tree Tools



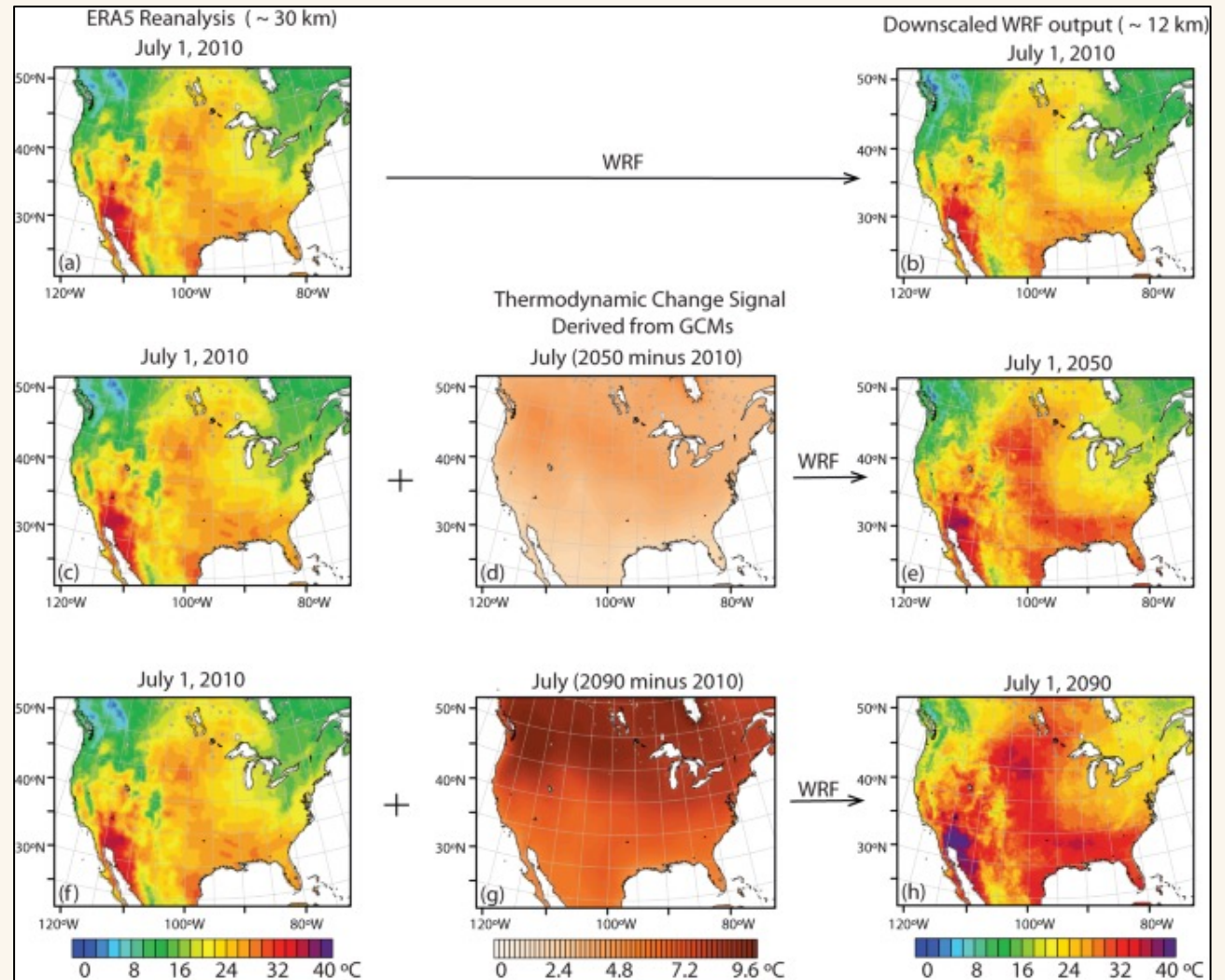
National Canopy Assessment Data Integration

Land cover metrics at 2-foot resolution for all census urban areas providing an accurate assessment of urban tree and land cover.



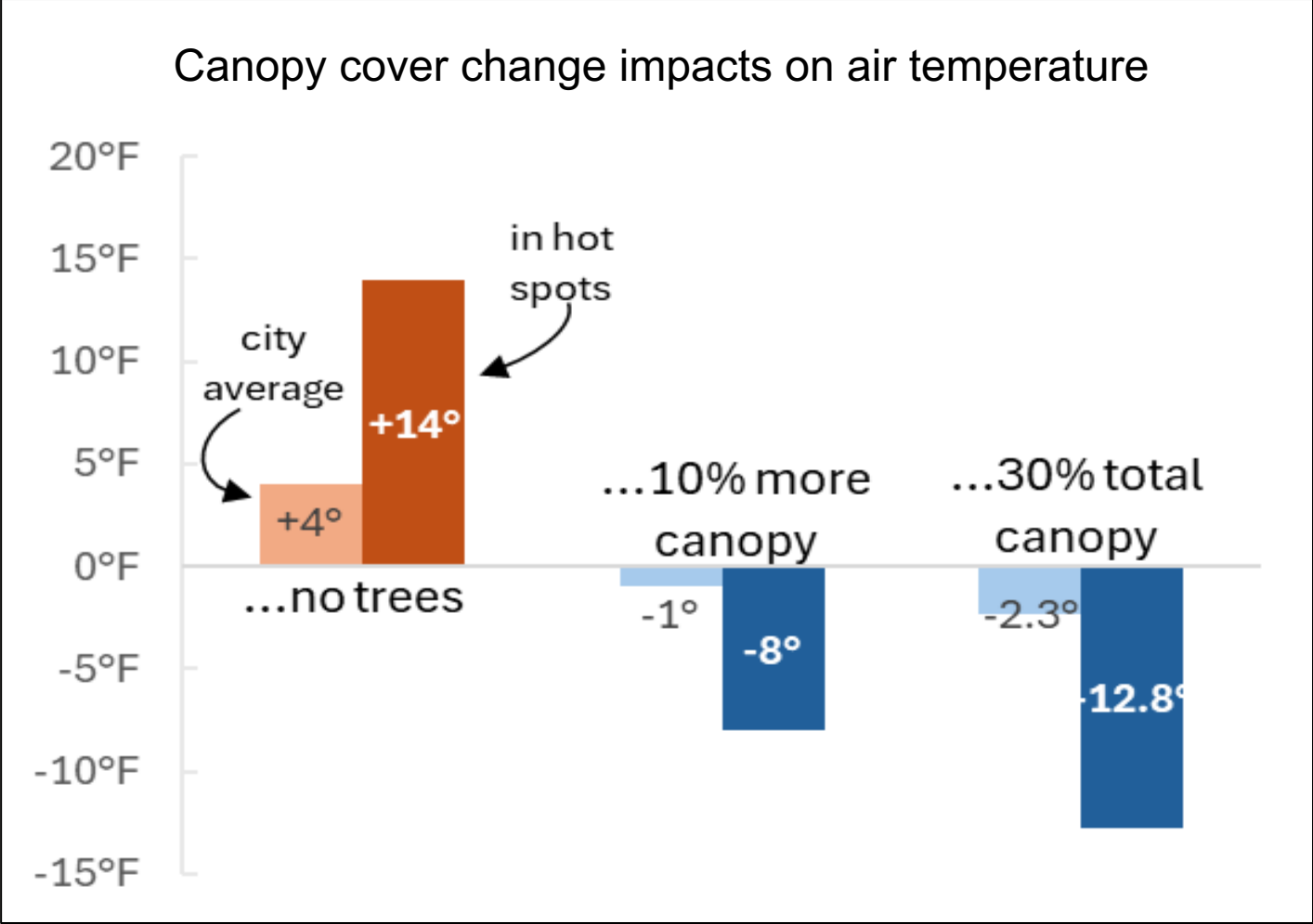
National Canopy Assessment Data Integration

Improved i-Tree ecosystem service assessments of carbon, pollution removal, hydrology, energy savings and air temperature.



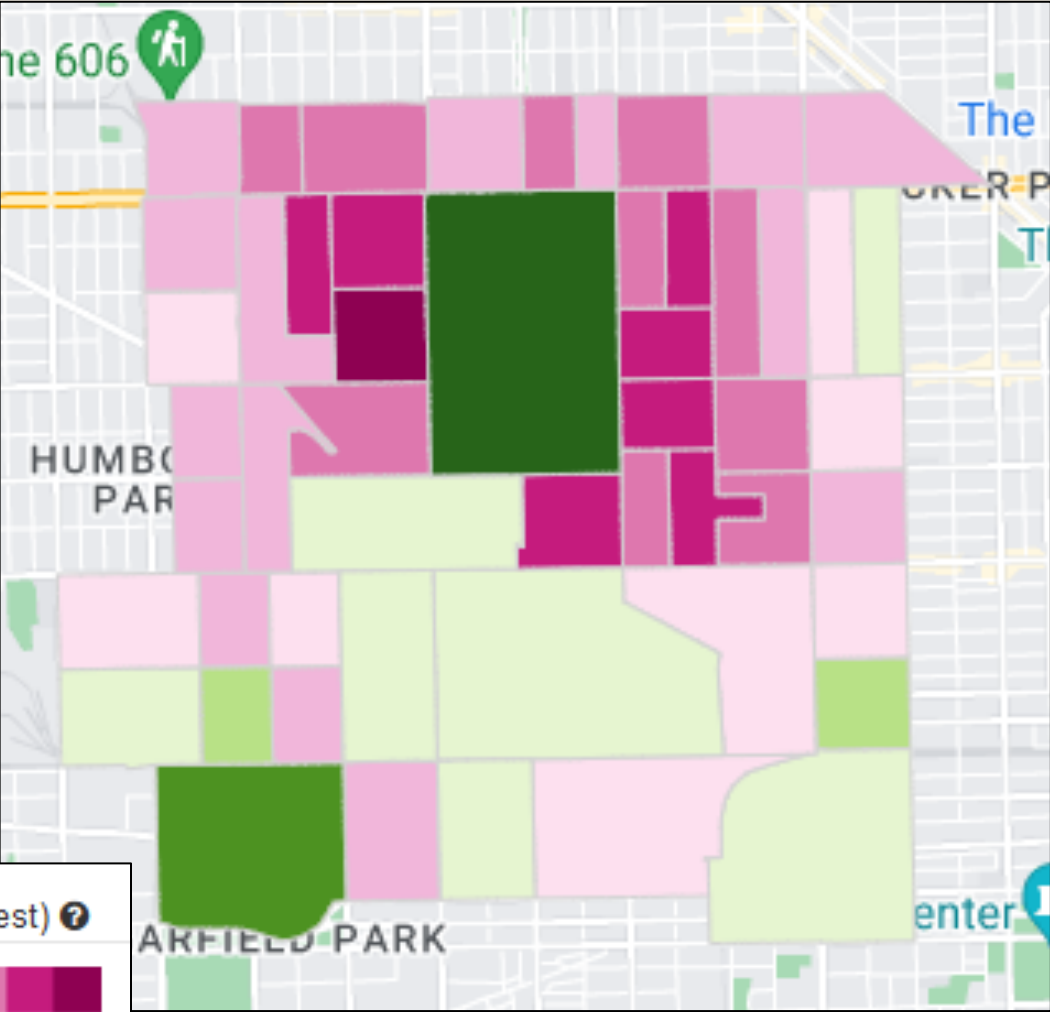
National Canopy Assessment Data Integration

Time series data providing the ability to assess changes in canopy cover and associated tree benefits over time.



National Canopy Assessment Data Integration

Enhanced ability to prioritize areas for tree planting and management efforts using high resolution data and canopy change metrics.



THE POWER OF A STORY

i-Tree Tools

- The Tools
- The Community
- The Need
- The Project
- The Resulting Benefits
- The Story



WHAT'S YOUR
STORY

**AMPLIFY YOUR STORY
PLEASE SHARE IT WITH US**



PARTNERS IN COMMUNITY FORESTRY 2024 CONFERENCE



Thank you.

Alexis Ellis - alexis.ellis@usda.gov

Robert Seemann – robert.seemann@usda.gov