

# PARTNERS IN COMMUNITY FORESTRY

## 2024 CONFERENCE



# Tree Care and Technology in Baltimore City



PRESENTED BY:

**Marcus Tuah, Tree Care Manager**  
**Kajall Hylton, GIS Coordinator**

Baltimore Tree Trust



**For Baltimore.** ⚡

Established in 2008, the Baltimore Tree Trust is building a local workforce to protect Baltimore's urban forest and plant a greener, healthier city for all of our neighbors.

⚡ **By Baltimore.**

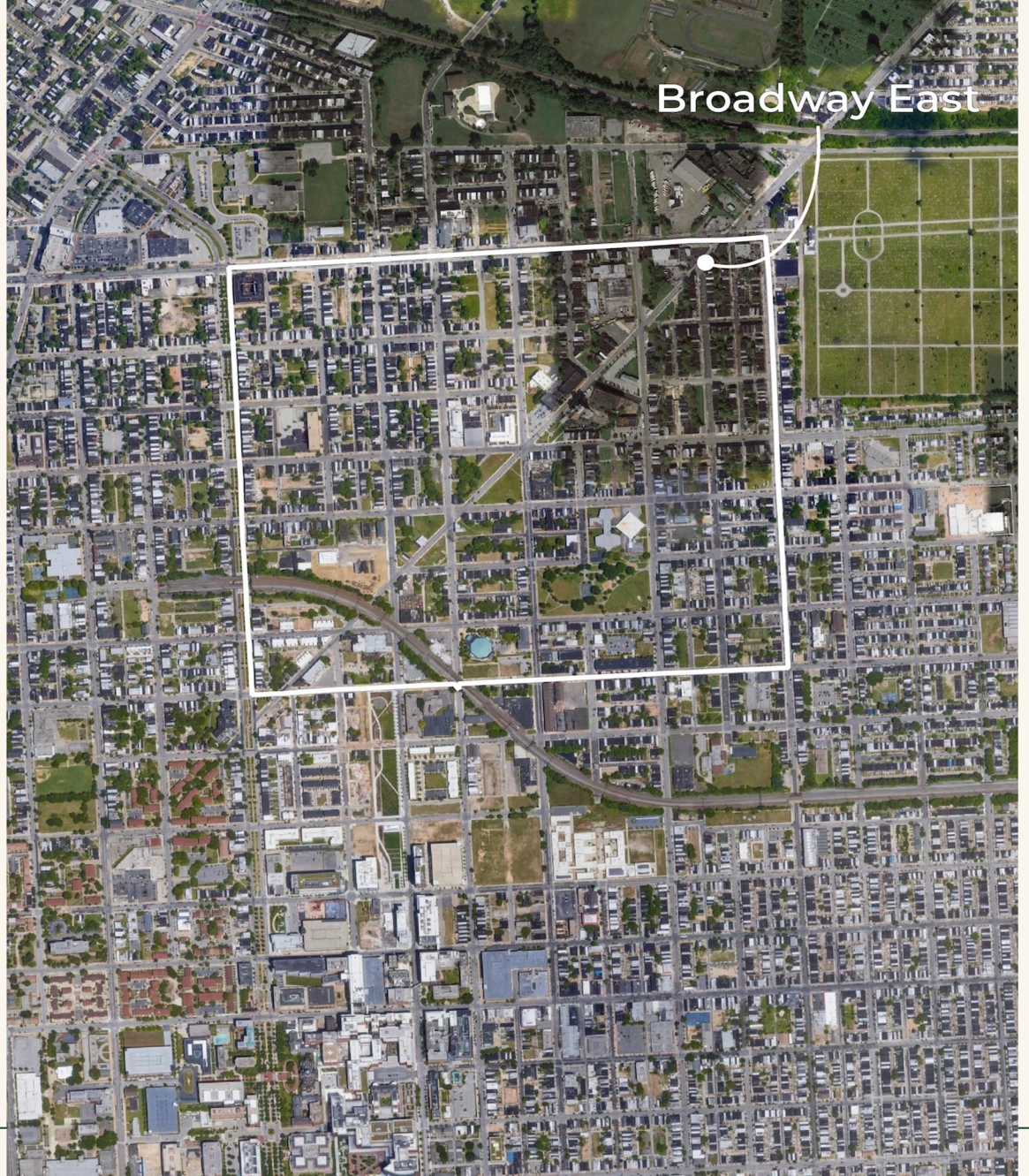






Roland Park

**Goal Is To Reach 40% Tree Canopy By 2037, Currently at 28%**



Broadway East





**500,000 Trees To Be Planted In Urban Underserved Areas**

# Maryland's 5 Million Trees Initiative

Tree Solutions Now Act of 2021

Goal to plant 5 million trees across the state by 2031

“Underserved Areas” fall within at least one of these criteria:

- a. **A neighborhood at any point in time redlined or marked as “hazardous” by the HOLC**
- a. **Average rate of unemployment exceeds the average rate of unemployment for the state**
- a. **Median household income equal to or less than 75% of the median household income for the state**



## Site Assessment

Project Coordinators and Site inspectors conduct site assessments from the field to determine how optimal the space is for a tree. They also input Site prep work like new wells, stump removals, and expansions.

## Outreach

After assessment is done, Outreach is performed to let the community know that we are doing tree work. This involves flyers, knocking on doors and councilman introductions.

1

2

5

3

4



## Site Maintenance

Maintenance crews then get a map of all the planted trees and do maintenance on a cycle schedule. If trees have died, then the maintenance crew docks the tree as dead and will remove it for future replanting.

## Site Planting

After being cleared for planting crews get a map of available planting sites and plant, stake, and mulch the trees for their final transplant.

## Site Prep

Site prep crews come and complete work to make a potential planting area viable for tree planting. This consists of tree pit creation, stump removal, and weed removal.



# Seasonal Tree Care Goals



## Summer Maintenance

Watering, mulching, and tree corrections.



## Winter Maintenance

Pruning, mulching, destaking, and removing dead trees.



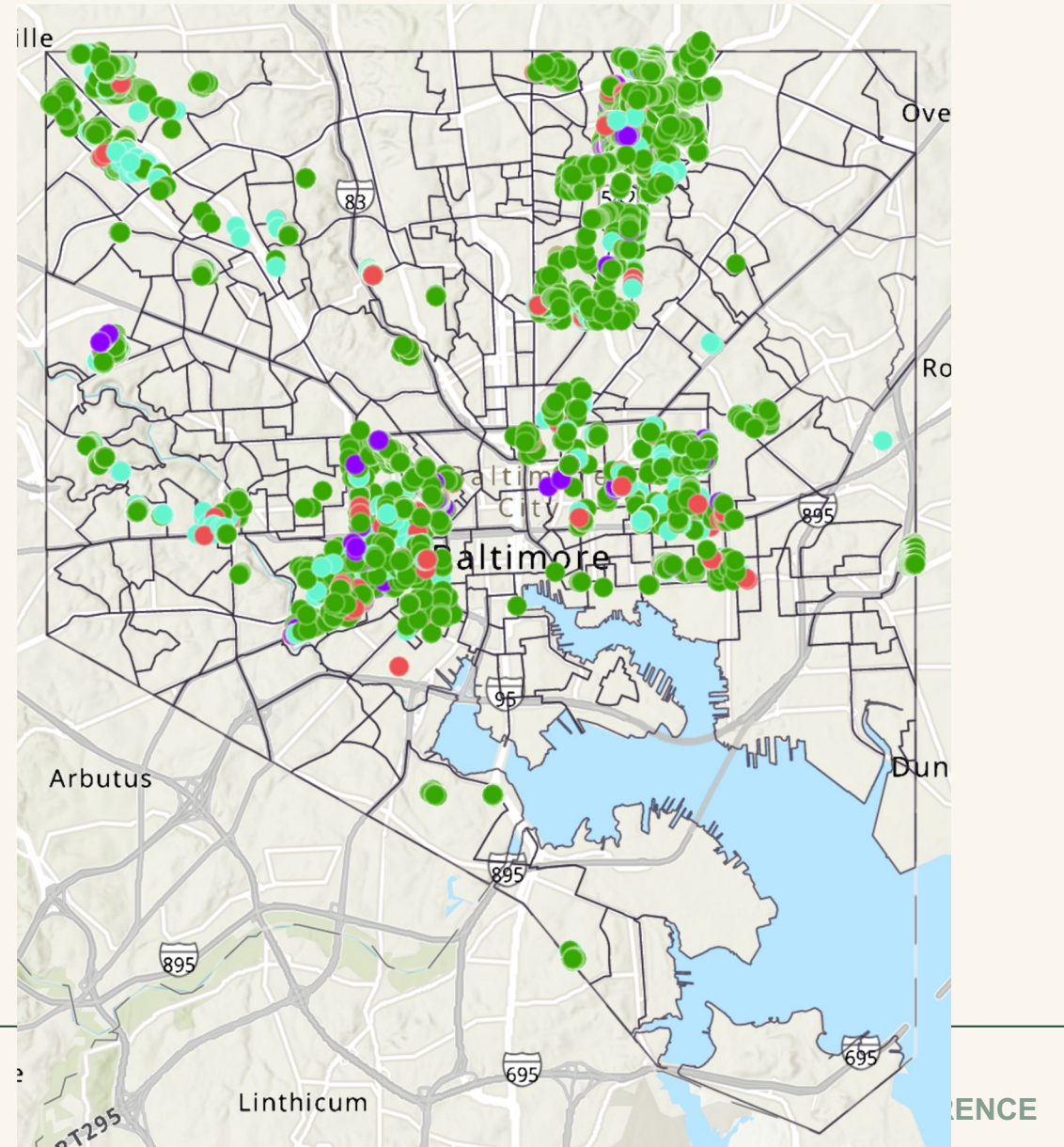
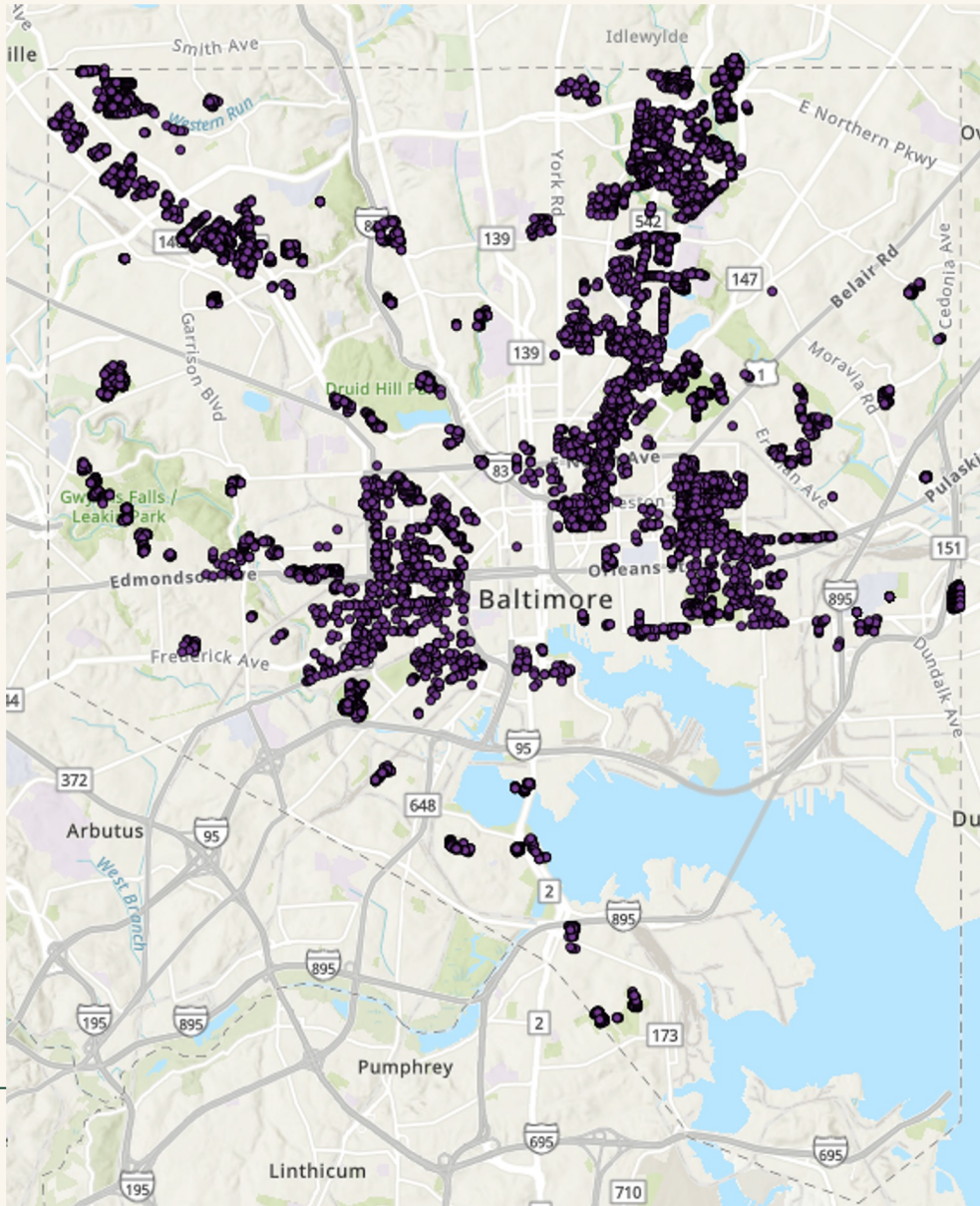
## Spring & Fall Maintenance

Mix of watering and mulching, and installing deer fencing at vulnerable project sites.



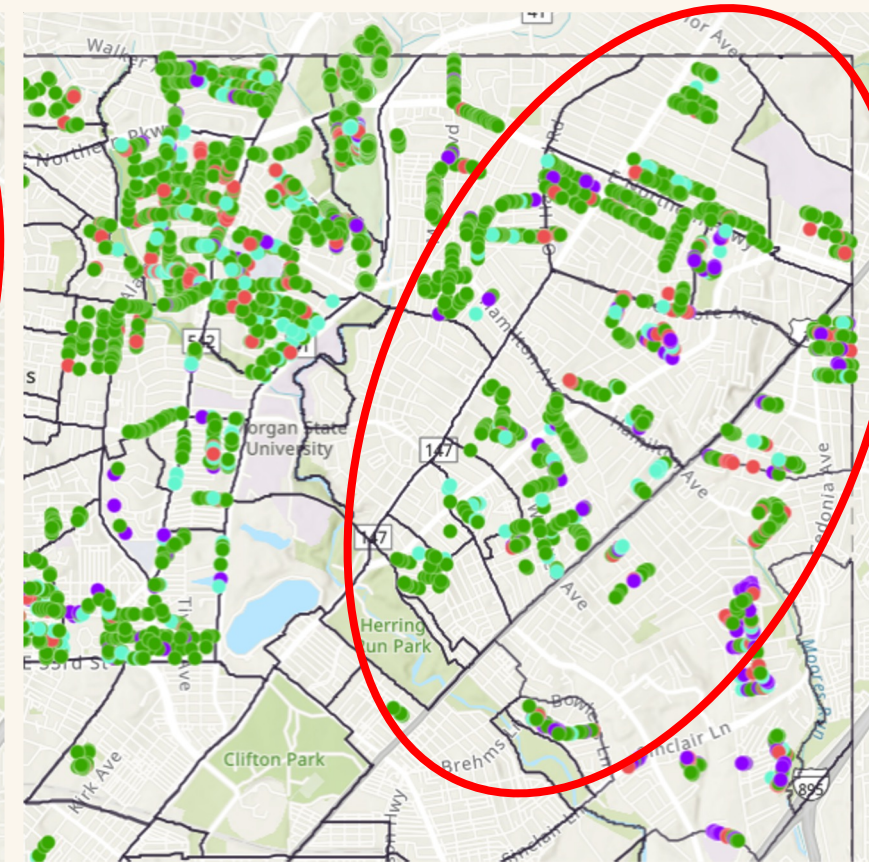
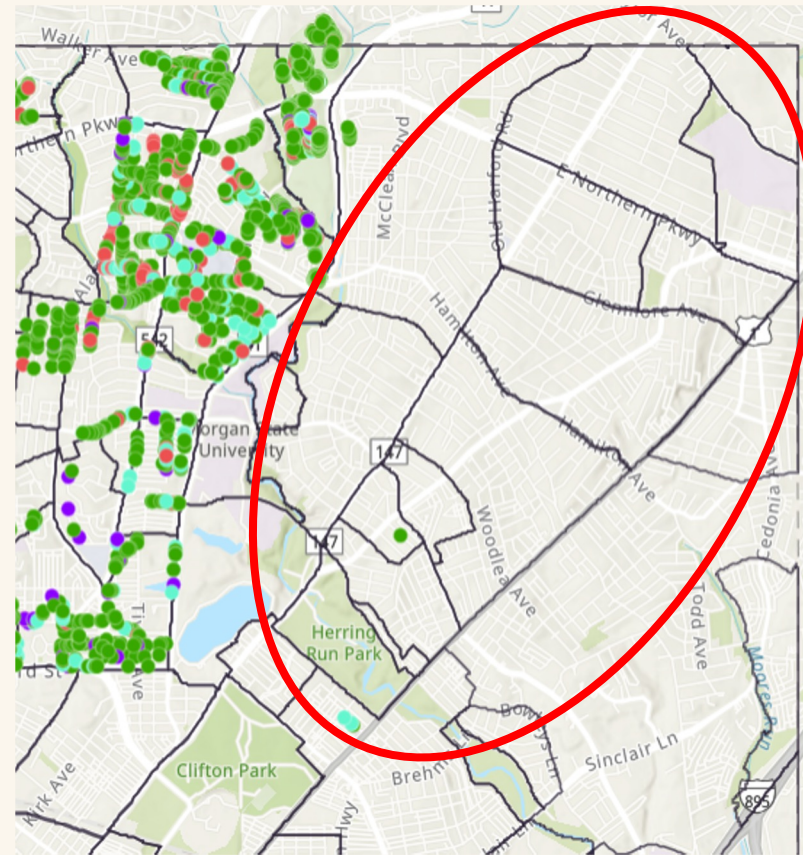
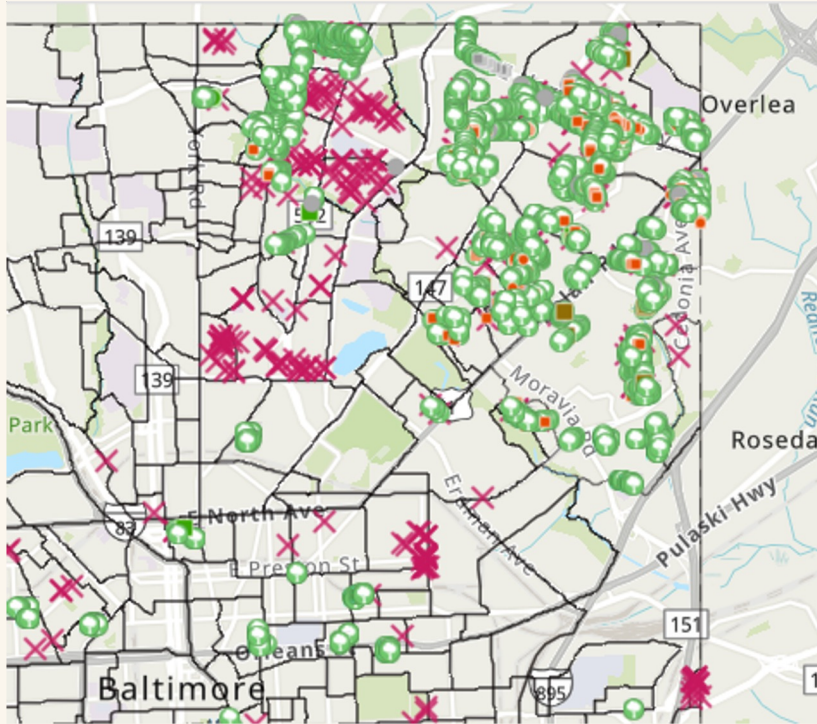


# Total Inventory vs. Trees in Warranty

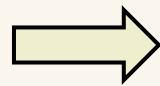




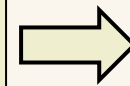
# From Planting To Tree Care



**Planting Map  
(Spring 2024)**



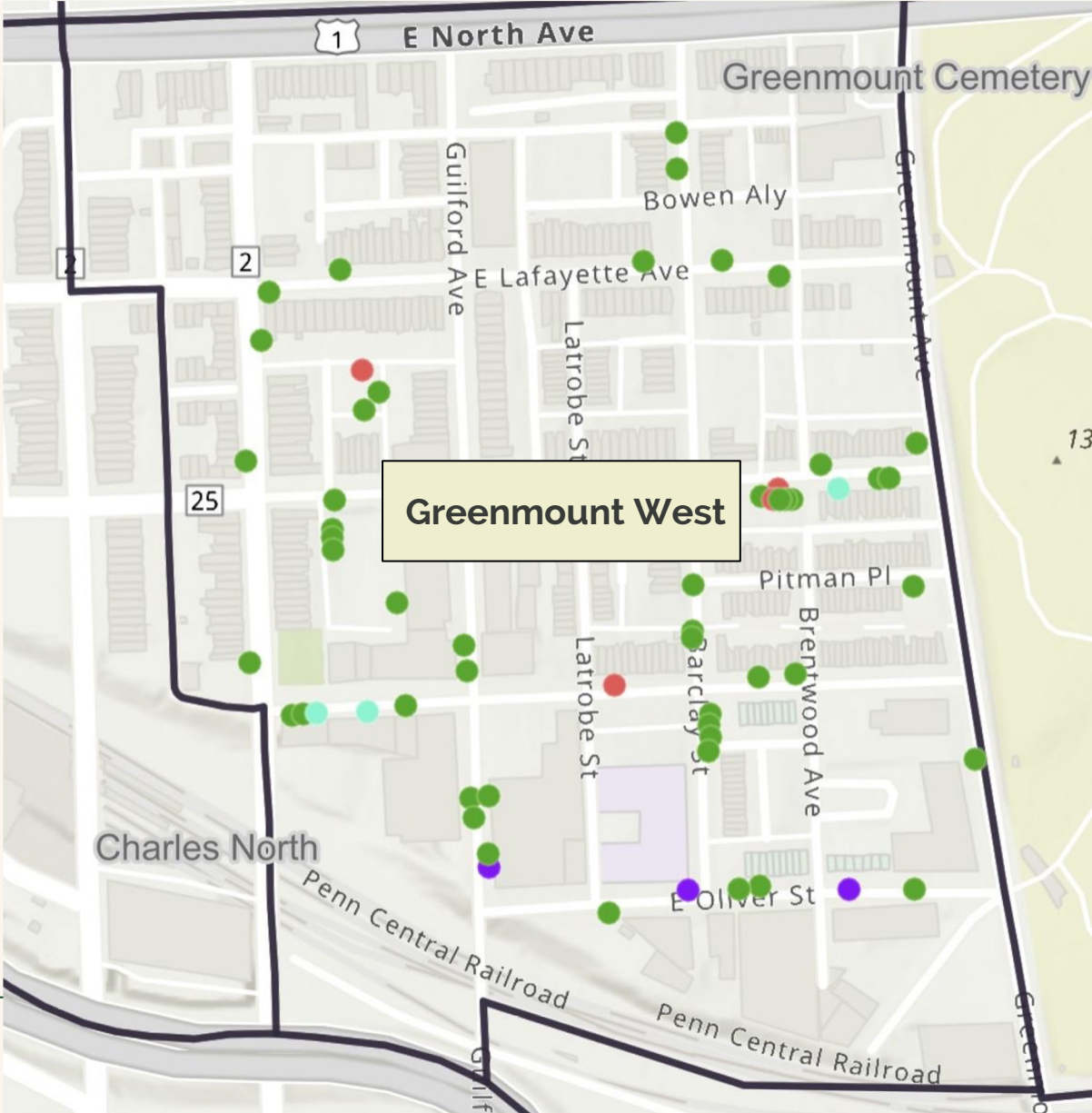
**Tree Care Map  
(Before Append)**



**Tree Care Map  
(After Append)**

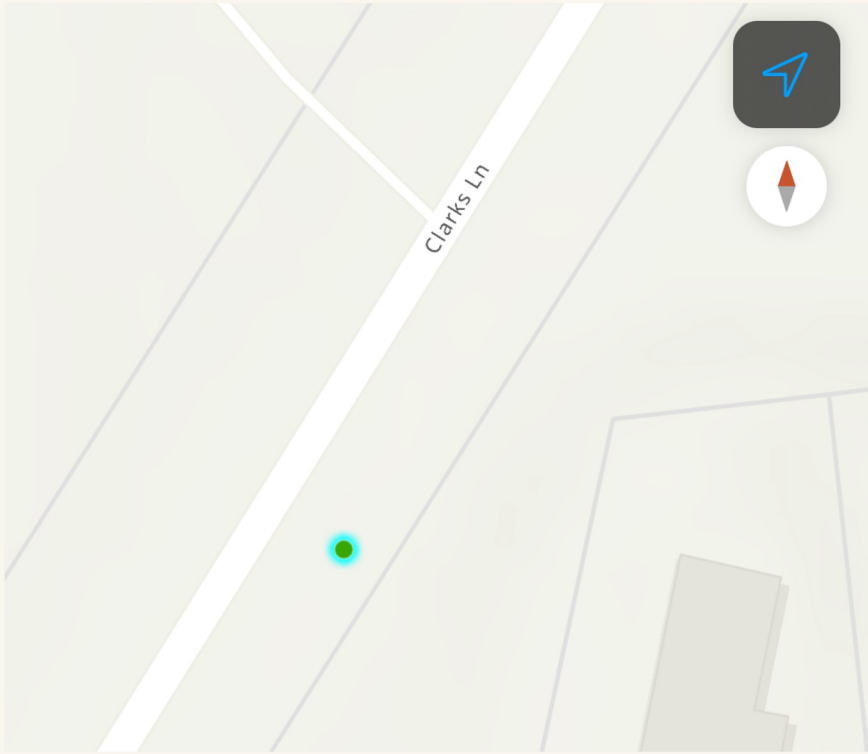


# Tracking Tree Condition





# What Data is Collected For Each Tree?



8:47

< Maps

Tree Care Inventory: Cross Country ✕  
39.365497°N 76.696618°W 8.4 km

Edited by  
elliott\_BTT · Jul 1, 2024

Fields ▾

Address  
3315 Clarks Ln, Baltimore 21215

Common Name  
Serviceberry (Apple)

Tree Status  
Planted

Date Planted  
3/21/2022

Tree Condition  
Good

Date Watered  
6/26/2024

Date Mulched  
7/1/2024

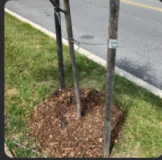
Tree Care Notes

✎ + ⋮

8:48

Cancel Collect Submit

[Inventory\_Archive] Tree Ca...  
39.365497°N 76.696618°W



Tree Care Crew \*  
Donald Jarvis ✕

Tree Condition \*  
Good ✕

Tree Care Task  
Mulch ✕

Tree Care Task 2  
Water ✕

Date Watered \*  
6/26/24, 10:43 AM ✕

Date Mulched \*  
7/1/24, 10:54 AM ✕



# Tree Care In Warranty Dashboard

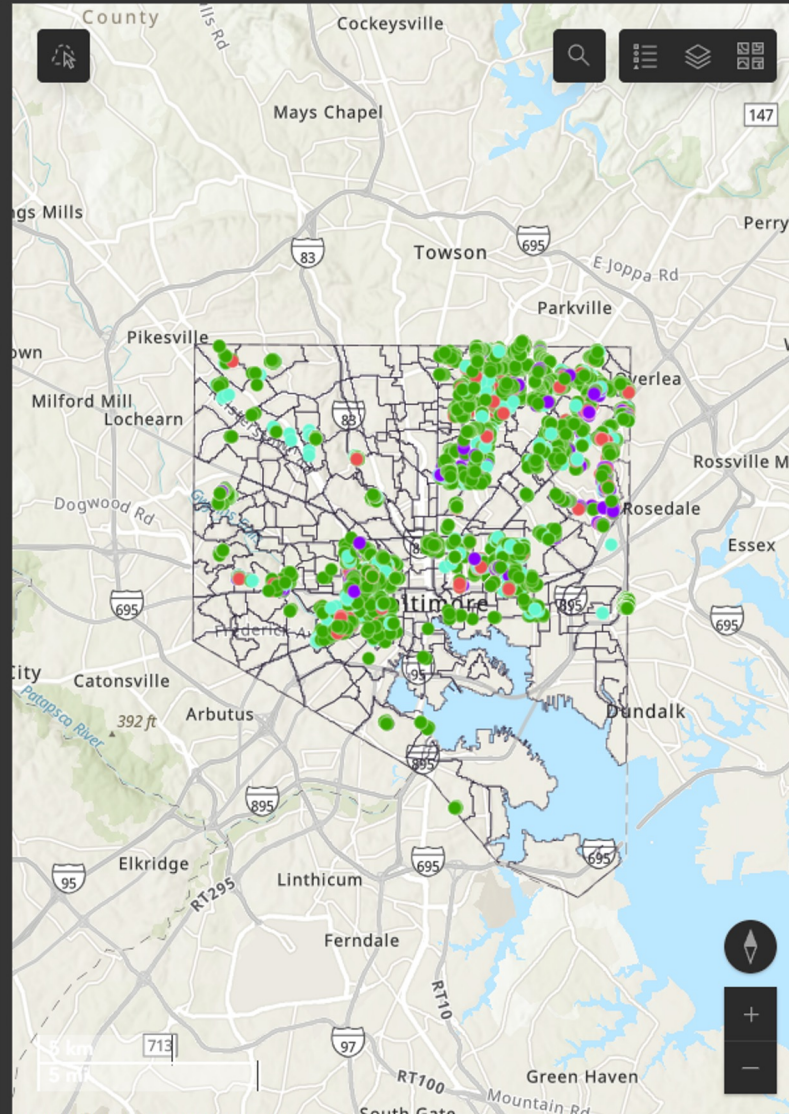
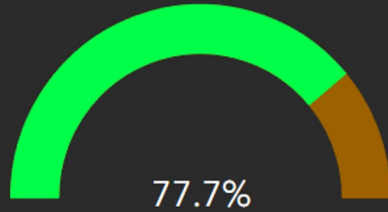
Survival/Warranty

4581  
5894

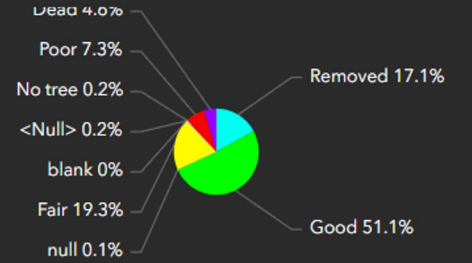
Warranty

Current

Survival Percentage



Condition Stats



Neighborhood

- Arcadia
- Arlington
- Baltimore Highlands
- Barre Circle
- Bayview
- Belair-Edison
- Belvedere
- Berea
- Beverly Hills
- Biddle Street
- Boyd-Booth

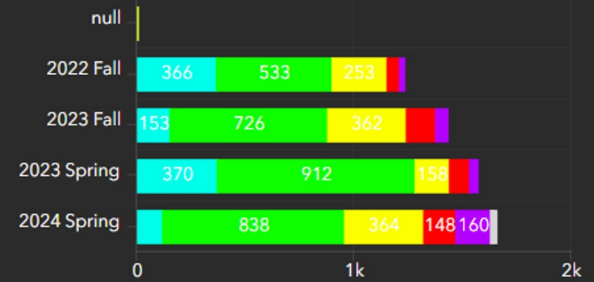
Common Name

- Swamp White Oak
- Overcup Oak
- American Sycamore
- American Elm (Valley Forge)
- Willow Oak
- Eastern Redbud
- Southern Red Oak
- Honeylocust (Thornless)
- Sugarberry
- Black Gum
- Common Hackberry
- American Elm (Jefferson)

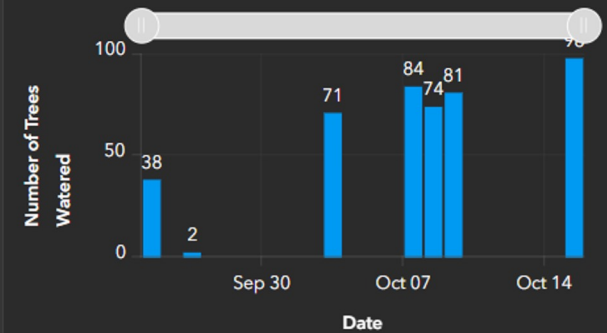
Count

- 616
- 423
- 374
- 356
- 275
- 262
- 262
- 258
- 181
- 180
- 154
- 131

Planting Season vs. Tree Condition



Number of Trees Watered Per Day



Warranty

Current

Top Species

A-Z

Current Season

Tree Care

Planting

Watering

Mulching





**Tool to estimate the long term environmental benefits that our trees will provide.**

**By 2054, we estimate that BTT trees planted in Spring 2022 will have:**

Saved  
**\$11,794** in  
electricity  
costs



Stopped  
**1,908,937**  
gallons of  
runoff  
Saving  
**\$17,058.40** in  
runoff costs



Removed  
**831,933**  
pounds  
of carbon  
from the  
atmosphere



Created  
**166,950**  
square feet of  
tree cover







# Spring 2022 Season Analysis

By: Marcus Tuah

October 3, 2024

## Druid Hill Park

Druid Hill is very close to our home base in Remington. We have held many volunteer events here, and it is often a site where we train our new Neighborhood Forestry Technicians.

Top Species: London Planetree,  
American Sweetgum, Swamp White Oak

Survival: 18/28 (64.3%)



# Thank you!

Learn more at [baltimoretreetrust.org](https://baltimoretreetrust.org)

Contact Us!

[marcus@baltimoretreetrust.org](mailto:marcus@baltimoretreetrust.org)  
[kajall@baltimoretreetrust.org](mailto:kajall@baltimoretreetrust.org)



Check Out Our  
Spring 2022  
Season Analysis!

